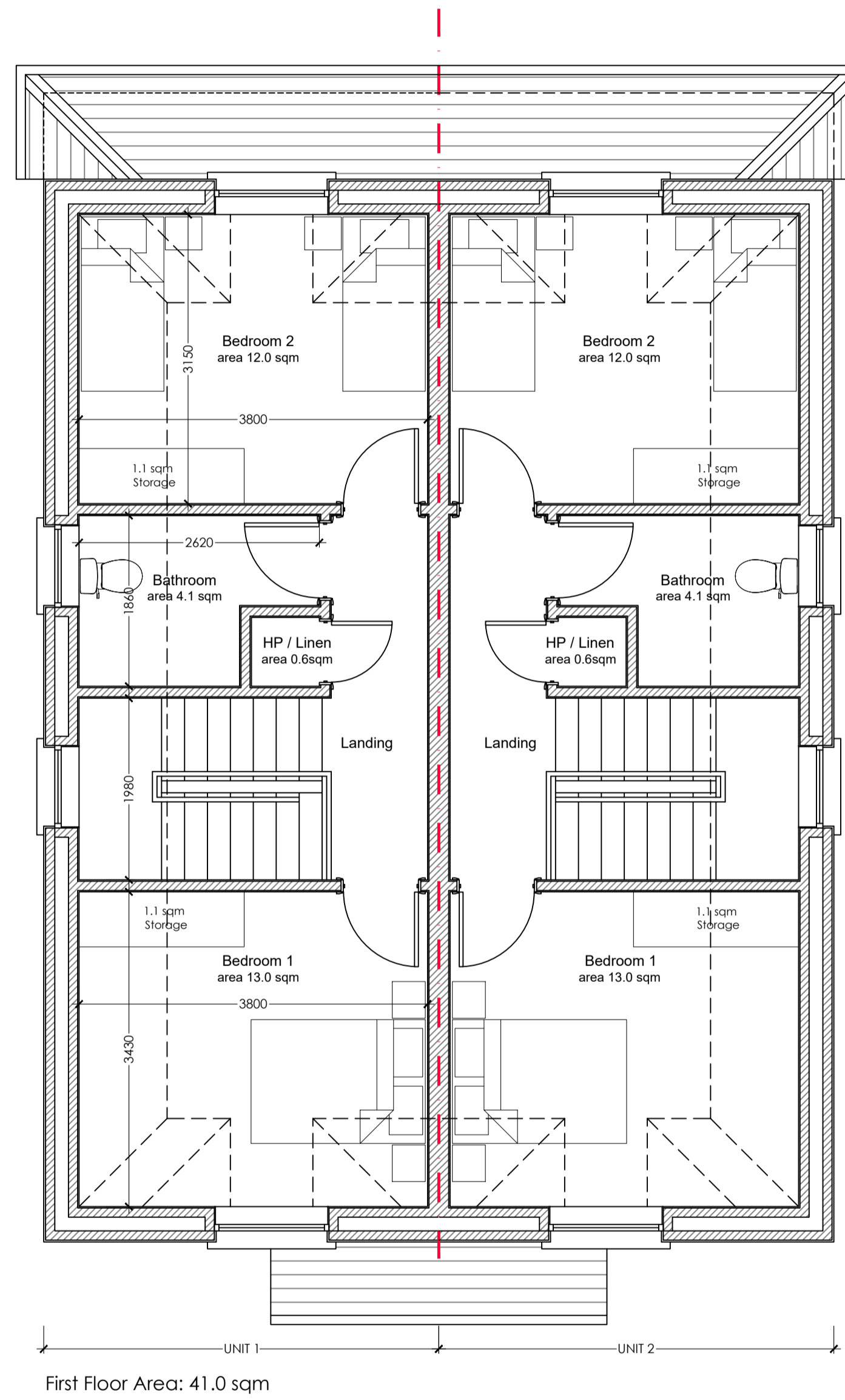


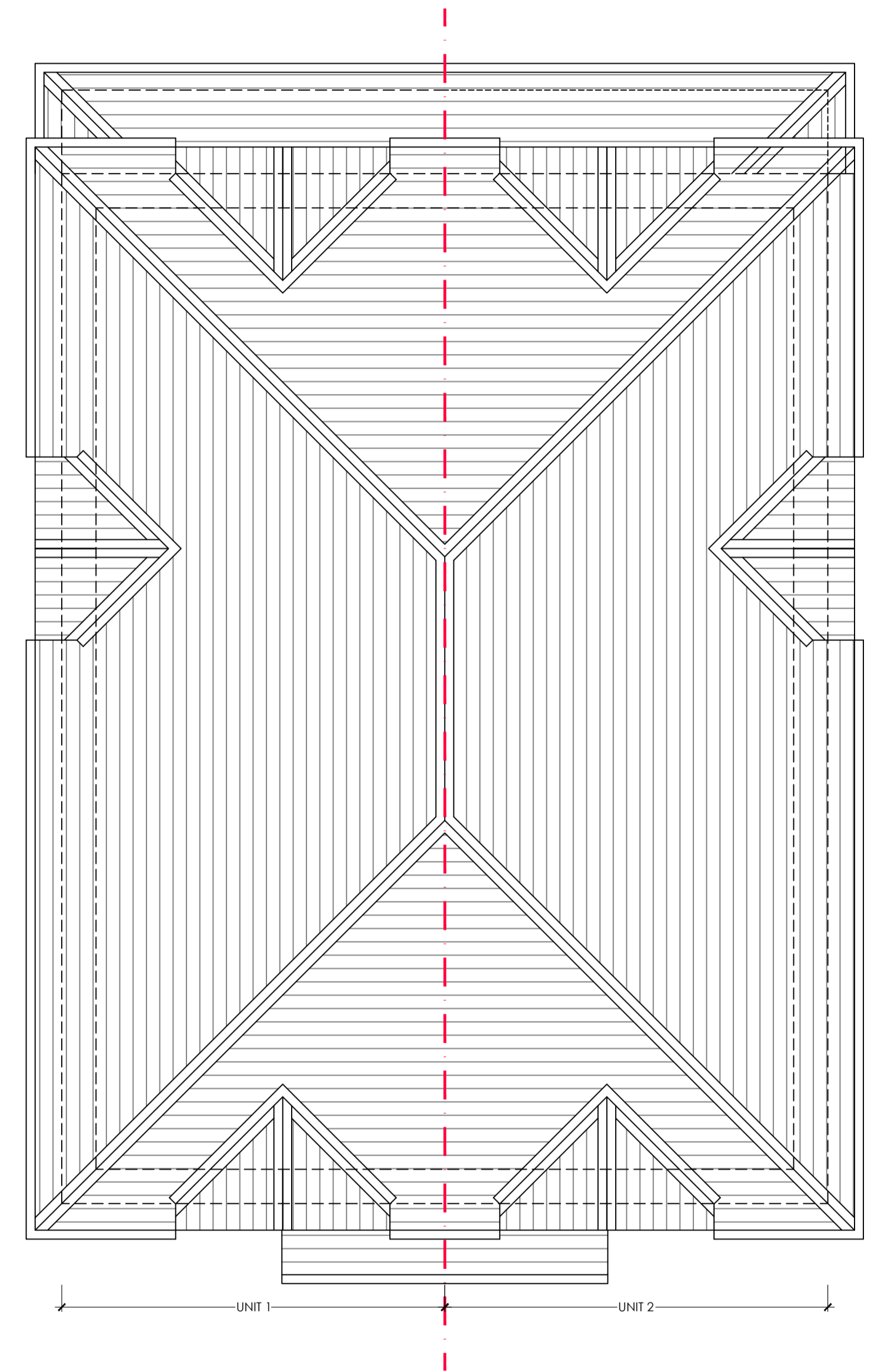
01 Ground Floor Plan

scale: 1:50



02 First Floor Plan

scale: 1:50



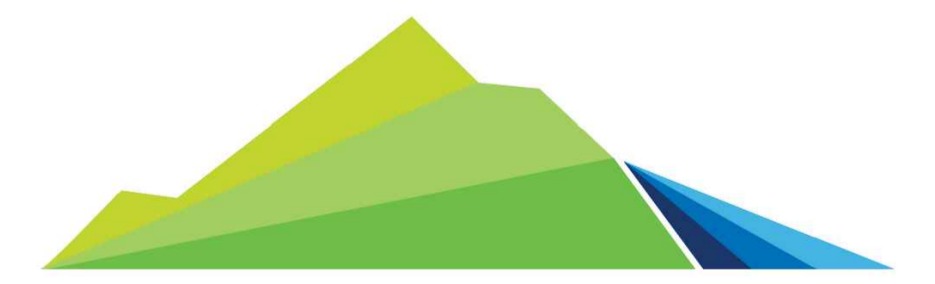
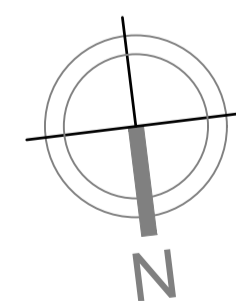
03 Roof Plan

scale: 1:50

SPACE PROVISION CALCULATION:	
Dwelling Type: 2 Bed / 4 Person / Single Storey	
Target:	Proposed:
Gross Floor Area:	70 sqm 85.6 sqm
Minimum Main Living Room:	13 sqm 13 sqm
Aggregate Living Area:	30 sqm 30 sqm
Aggregate Bedroom Area:	25 sqm 25 sqm
Storage:	4 sqm 4 sqm

Space provision calculations based on "Quality Housing for Sustainable Communities" and comply with the following:

- Area of single bedroom minimum 7.1 sqm & 11.4 sqm for double bedroom. Area of main bedroom should be minimum 13 sqm in dwelling designed to accommodate more than 3 people
- Minimum unobstructed living room width 3.3m for 2 bedroom units & 3.8m for 3 bedroom units
- Minimum room widths for bedrooms are 2.8m for double bedrooms & 2.1m for single bedrooms



WICKLOW

ENDLESS OPPORTUNITIES



Proposed Dwellings at Millbank, Greystones, Co. Wicklow

CLIENT NAME: Wicklow County Council

DRAWING TITLE: Proposed Plans

Issued for Comment

SCALE: As noted @ A1

DATE: January 2021

DRAWING NUMBER: Millbank - TCCE-2021-xxxx-PR101