

Wicklow Socio-Economic Statement



Wicklow Socio-Economic Statement

Introduction

This is the socio-economic framework for the Local Economic and Community Plan (LECP) for County Wicklow. This framework sets out the priority high level goals that will be addressed in the plan. They will be further defined into specific measurable objectives and practical time-bound actions. These will be based on evidence and on further analysis of the socio-economic factors pertaining to County Wicklow.

This framework is now going out to consultation, to the community and to key stakeholders, those who will be affected by service delivery and those who will be involved in the implementation of this plan. It is hoped that this will harness a widespread support for, and commitment to, the plan, for it is only by working together that the potential development that the plan creates can be realised.

Local Economic Community Plan (LECP)

The Local Economic and Community Plan is part of the recent local government reform programme (the Local Government Reform Act 2014). It is a six-year plan containing certain measures necessary to promote and support community and economic development in County Wicklow. The LECP is to be informed by the overarching vision for local government, as articulated in the *Action Programme for Effective Local Government – Putting People First* “to promote the well-being and quality of life of citizens and communities”. The LECP will also be the primary mechanism at local level to bring forward national programmes such as the *Action Plan for Jobs* and the *Report of the Commission for Economic Development of Rural Areas* (CEDRA).

The plan is to consist of two parts. The community element of the plan is to be developed by the Local Community Development Committee (LCDC). The economic element of the plan is to be developed by the Local Authority through the Economic Development and Enterprise Support Strategic Policy Committee (SPC). However there is to be a high level of integration between the two elements, specifically regarding the preparation of this socio-economic framework and regarding integrated actions to increase employment and quality of life opportunities in Wicklow. This is in recognition of the fact that economic development and local community development are mutually supportive in building sustainable communities. Implementation will be through the programmes of other stakeholders as well

as by the local authority. The implementation of the plan will be monitored and evaluated by the LCDC and the Local Authority.

To ensure integration of the economic and social elements, the plan will developed by an Advisory Committee, comprising three members of the LCDC, three members of the SPC (Local Authority) and any other expertise as necessary.



Phases in the Development of the LECP

The first phase in the development of the plan is for the LCDC and the SPC to prepare a socio-economic statement/framework for the County. The Framework Statement is to outline the proposed high level goals that will provide a focus for the key elements of the LECP. This Framework was prepared based on:

- Initial consultation process
- Socio-economic profile of Wicklow
- Review of strategies and plans

This framework will serve as the agreed vision for County Wicklow and provide the overarching framework for the Local Economic and Community Plan. Other plans and strategies for County Wicklow will be expected to align with the LECP. The LECP will have regard to local, national and EU plans and strategies.

In preparing the LECP, the LCDC and the SPC will be guided by the following principles:

Commitment, co-operation and partnership

All those involved will commit to the process and work together for the common good of the County

Agents of Change

All those involved will be open to change and be receptive to new ideas and approaches to the development of the County

Community consultation and engagement

The LCDC is committed to the participation of all in this process

Social Inclusion and Equality

There will be a specific focus on the marginalized and disadvantaged in the County

Simplicity

The LCDC will avoid duplication of effort and keep structures as simple as possible and communicate clearly

Maximising outcomes

The LECP will focus on maximising the use of resources and achieving value for money

Sustainable Development and Social Inclusion

The principles of sustainable development and social inclusion will underpin the LECP

Vision Statement

'Our Vision is for a county which provides a high quality of life and well-being for all; values socially inclusive urban and rural communities; is driven by a dynamic and innovative economy; promotes and prioritises sustainable development and protects and enhances the county's unique and rich natural and cultural heritage'.

HIGH LEVEL GOALS

COMMUNITY DEVELOPMENT & SOCIAL INCLUSION

GOAL 1: Develop community capacity in disadvantaged communities and engage in urban regeneration and rural development.

GOAL 2: Promote active citizenship and public participation to improve governance, transparency and enrich decision making.

GOAL 3: Develop targeted and integrated supports for vulnerable and disadvantaged groups (see Appendix 3)

GOAL 4: Support local communities in innovation, entrepreneurship, micro-enterprise and social innovation.

GOAL 5: Capitalise on Wicklow's unique attributes incl. proximity to Dublin market: excellent quality of life; human capital; tourism; landscape, marine, agriculture and forestry resources

ECONOMIC & ENTERPRISE DEVELOPMENT

GOAL 6: Develop infrastructure and measures that are positive and supportive to investment, enterprise, innovation and knowledge creation, in strategic locations.

GOAL 7: Sustain existing enterprise and develop quality employment and income opportunities for the wide range of employment needs in the county with possibilities for reversing commuting patterns.

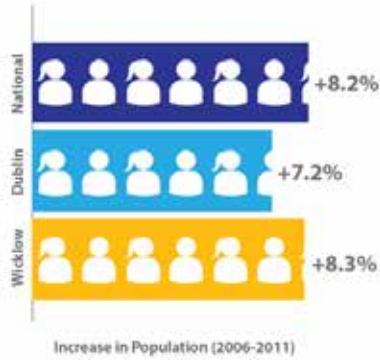
GOAL 8: Support training and labour activation measures based on analysis of employment trends and the skill needs of employers.

GOAL 9: Support a shift towards low carbon & climate resilient economic activity, reducing energy dependence and sustainable use of resources, and leading in the Smart Green economy.

GOAL 10: Harness efficiently the full resources of the County and reduce duplication and unnecessary overlap.

KEY WICKLOW FINDINGS

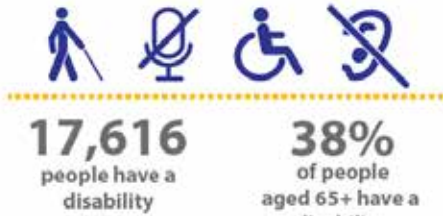
POPULATION



HEALTH



20.6%
of carers work
6hrs or more
per day



38%
of people
aged 65+ have a
disability

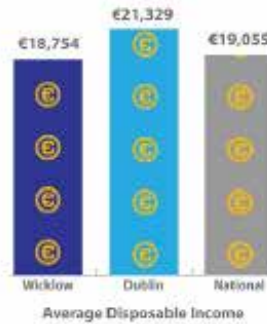


TRAVEL

Mode of Transport to Work, School or College (Census 2011)



EMPLOYMENT, ECONOMY & ENTERPRISE



Number of Enterprise Ireland client companies



Overseas Visitors Numbers



	Britain	Mainland Europe	N. America	Other
Visitors	80,000	77,000	34,000	13,000
Revenue	€19 million	€30 million	€12 million	€10 million

Next Steps:

STAGES IN THE PREPARATION OF THE LOCAL ECONOMIC AND COMMUNITY PLAN

Stage 1 Preparation	Establish & analyse the socio-economic evidence base	On foot of this evidence Develop a socio-economic statement for the county and develop high level goals for the integrated LECP	Advisory Steering Group to prepare SPC & LCDC to adopt the statement for public consultation
Stage 2 Public Consultation	Undertake a Public Consultation (4 weeks) on the socio-economic statement and high level goals	Revise the Statement & refer to the Municipal Districts & Regional Assemblies	Advisory Steering Group to prepare, SPC & LCDC to adopt the revised statement for submission to MDs and RAs
Stage 3 Develop the Objectives and Actions	Develop detailed objectives for the economic and community element of the plan underpinned by clear measurable actions	Advisory Steering Group to prepare, SPC & LCDC to agree to the objectives and actions	Advisory Steering Group to submit a final draft incorporating the statement and goals, objectives and actions for consideration by the MDs and RAs
Stage 4 Finalise Plan	SPC & LCDC consider & adopt final draft revised as necessary following consideration by the MDs and RAs	Local Authority to adopt the final draft of the LECP	Final Plan submitted to the Minister and published by the LA
Stage 5 Monitoring & Review	Advisory Steering Group to monitor progress on actions and against measurable target for the evaluation.		

The dissemination of the Socio-economic Framework is the beginning of Stage 2 of the process. This is a consultation process to further define and refine the objectives of the plan. All stakeholders are invited to make submissions on this framework.

Submissions can be made to:

The Community Culture and Social Development Section

Wicklow County Council

Station Road

Wicklow

Jcarroll@wicklowcoco.ie

0404 20208

The opportunity to make submissions will close on Tuesday June 30th 2015