

COUNTY WICKLOW LOCAL ECONOMIC AND COMMUNITY PLAN

Consultation Workshop – Education, Support & Training

24th August 2015

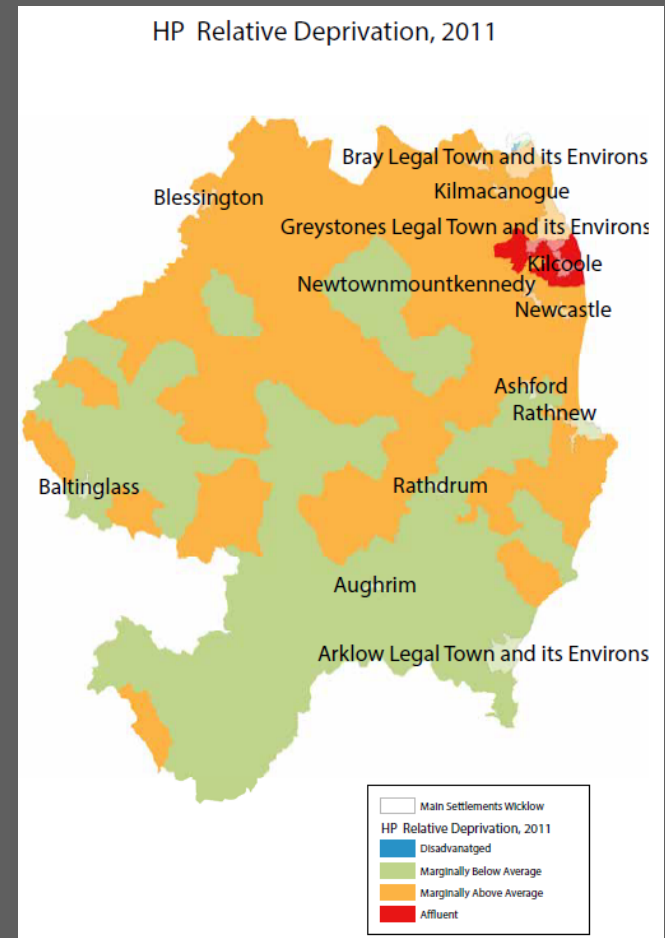


WHERE WE ARE IN THE LECP PROCESS

- Socio-Economic Profile **prepared**
- Socio-Economic Statement **adopted**
- Vision and High Level Goals **agreed**
- Current Stage
 - Preparation of Community Plan and Preparation of Economic Plan

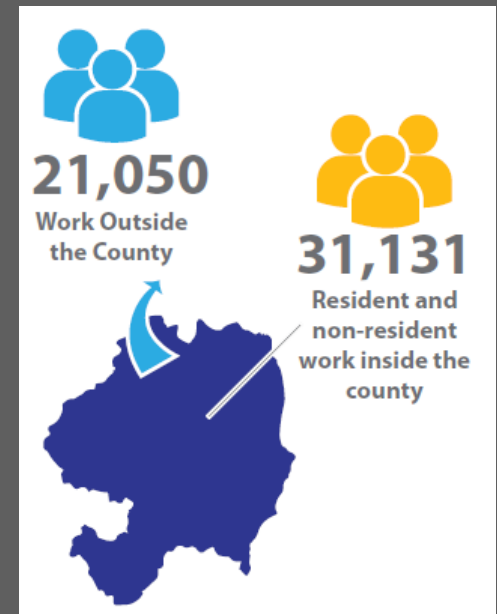
KEY BASELINE FINDINGS

- ✓ Population Census 2011 - 136,640 → +8.3%
- ✓ 47,798 households – 20% - one person
- ✓ 27% of people live in rural areas
- ✓ Age dependency 51.0%
- ✓ Older population - 11%
- ✓ Persons with a Disability – 13%
- ✓ 9.9% non-Irish national
- ✓ 721 Irish Travellers in County - highest number living in Bray & Wicklow & Rathnew
- ✓ High Traveller unemployment & a high Traveller youth population

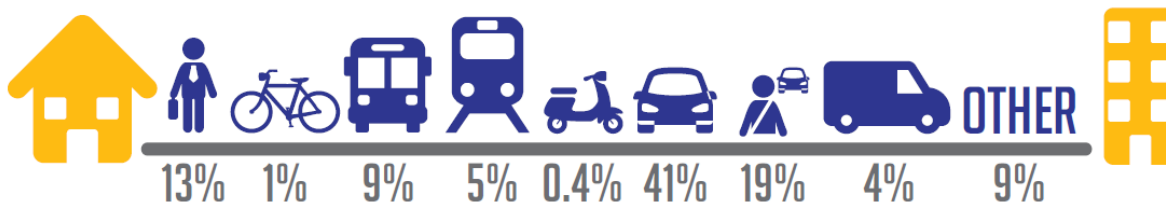


KEY BASELINE FINDINGS

- Live Register (July 2015) : 10,919 → 13% are <25 years of age
- Employment : 31,131 resident and non-resident work in County
- 21,050 out-commute for employment
- High level of out-commuting to DLR & Dublin City Centre



Mode of Transport to Work, School or College (Census 2011)



VISION FOR THE COUNTY

→ LECP is informed by an overarching **Vision** for County Wicklow:

“Our Vision is for a county which provides a high quality of life and well-being for all; values socially inclusive urban and rural communities; is driven by a dynamic and innovative economy; promotes and prioritises sustainable development and protects and enhances the county’s unique and rich natural and cultural heritage”.

HIGH-LEVEL GOALS:

COMMUNITY DEVELOPMENT AND SOCIAL INCLUSION

COMMUNITY DEVELOPMENT & SOCIAL INCLUSION

GOAL 1: Develop community capacity in disadvantaged communities and engage in urban regeneration and rural development.

GOAL 2: Promote active citizenship and public participation to improve governance, transparency and enrich decision making.

GOAL 3: Develop targeted and integrated supports for vulnerable and disadvantaged groups (see Appendix 3)

GOAL 4: Support local communities in innovation, entrepreneurship, micro-enterprise and social innovation.

GOAL 5: Capitalise on Wicklow's unique attributes incl. proximity to Dublin market: excellent quality of life; human capital; tourism; landscape, marine, agriculture and forestry resources

HIGH-LEVEL GOALS:

ECONOMIC AND ENTERPRISE DEVELOPMENT

ECONOMIC & ENTERPRISE DEVELOPMENT

GOAL 6: Develop infrastructure and measures that are positive and supportive to investment, enterprise, innovation and knowledge creation, in strategic locations.

GOAL 7: Sustain existing enterprise and develop quality employment and income opportunities for the wide range of employment needs in the county with possibilities for reversing commuting patterns.

GOAL 8: Support training and labour activation measures based on analysis of employment trends and the skill needs of employers.

GOAL 9: Support a shift towards low carbon & climate resilient economic activity, reducing energy dependence and sustainable use of resources, and leading in the Smart Green economy.

GOAL 10: Harness efficiently the full resources of the County and reduce duplication and unnecessary overlap.

OBJECTIVES

- The High-Level Goals will be developed into a series of **OBJECTIVES** and will become targeted **MEASURABLE** actions
- These objectives relate to
 - **Economic** development
 - **Community** development
 - **Both** economic and community development

CURRENT STAGE

- Preparation of **Community Plan** and Preparation of **Economic Plan**
- Identification of **Strategic Priorities**
- **Measurable Actions**

EDUCATION, SUPPORT AND TRAINING

- Identified as a key **High Level Goal** for the County
- Covers a wide range of issues, including such items as:
 - Life-long learning
 - Education and training
 - Youth education and employment
 - Childcare and Parent Support
 - Personal Development
 - Enhanced Information
 - Employment Networks and Decision making structures
 - Employment supports

STRATEGIC QUESTIONS

- **What** Priority Action for the Community Plan
- **How** Overcoming barriers
- **Who** Responsibility for delivery
- **When** Timescale for delivery

CONSIDERATIONS

- Can proposals be delivered within the Community Plan process?
- Is there a dependence on external funding?
- Are proposals consistent with national and local policy?
- Wicklow County Development Plan 2016-2022 is under review in a separate process

WHAT TO CONSIDER?

- **What is the issue** and why is it important for County Wicklow?
- Is it within the **scope** of the LECP?
- Is it a **problem** now or likely to be one in the future?
- Where do we want to be in terms of this issue in **5-10 years time**?
- What does the **evidence** show about the impact of the problem in the County?
- What are the **lessons** that have been learned to date about addressing this issue?
- Are there **other organisations/agencies** that should be involved – if so who are they?

SUMMARY OF DISCUSSION

- **What** Priority Action for the Community Plan
- **How** Overcoming barriers
- **Who** Responsibility for delivery
- **When** Timescale for delivery

- This will inform the making of the Community Plan and Economic Plan

THANK YOU FOR ATTENDING

THIS CONSULTATION WORKSHOP ON
*WICKLOW LOCAL ECONOMIC AND
COMMUNITY PLAN*

