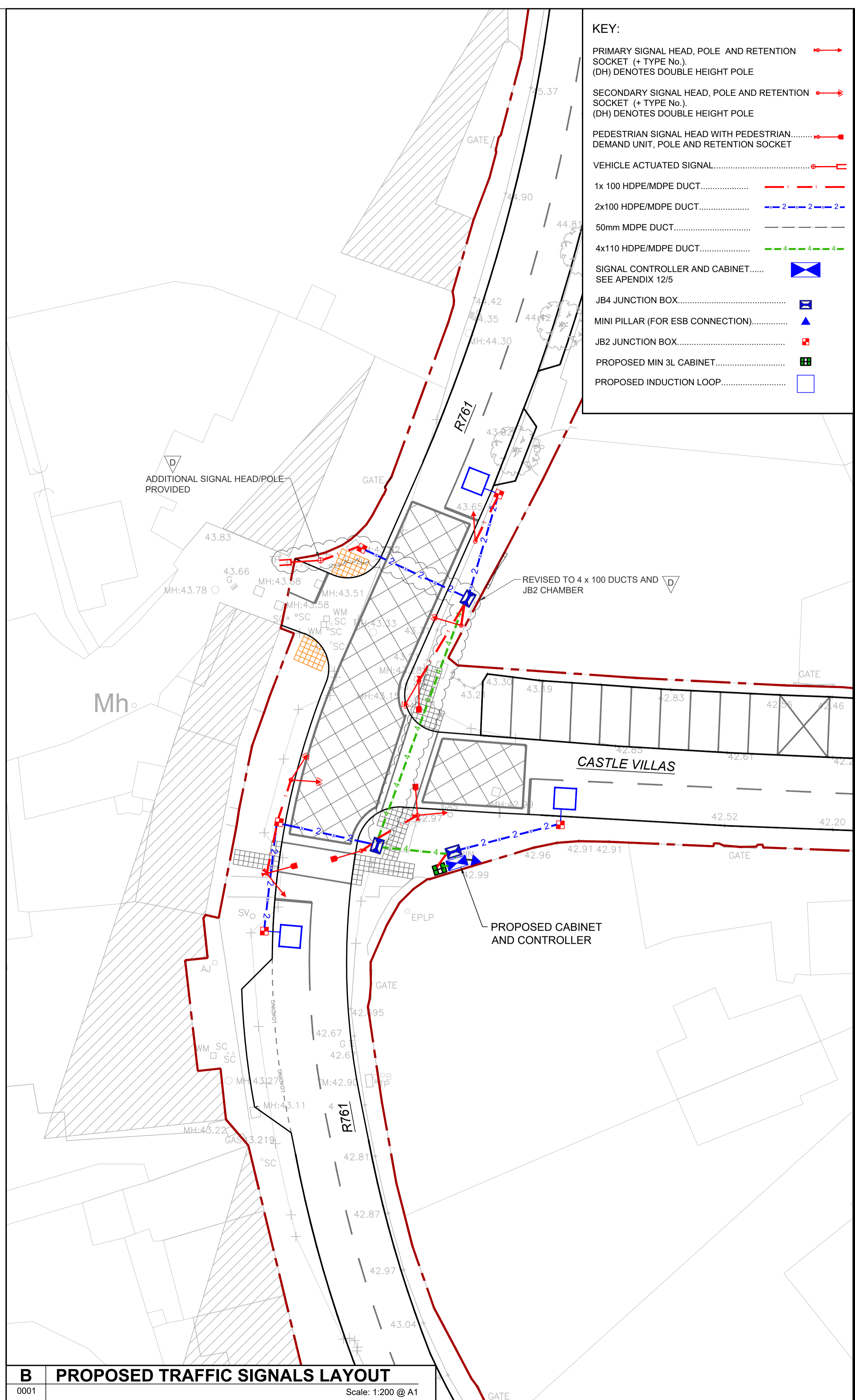


**A PROPOSED JUNCTION LAYOUT**  
 0001 Scale: 1:200 @ A1



**B PROPOSED TRAFFIC SIGNALS LAYOUT**  
 0001 Scale: 1:200 @ A1

**KEY:**

PRIMARY SIGNAL HEAD, POLE AND RETENTION SOCKET (+ TYPE No.), (DH) DENOTES DOUBLE HEIGHT POLE	
SECONDARY SIGNAL HEAD, POLE AND RETENTION SOCKET (+ TYPE No.), (DH) DENOTES DOUBLE HEIGHT POLE	
PEDESTRIAN SIGNAL HEAD WITH PEDESTRIAN DEMAND UNIT, POLE AND RETENTION SOCKET	
VEHICLE ACTUATED SIGNAL	
1x 100 HDPE/MDPE DUCT	
2x100 HDPE/MDPE DUCT	
50mm MDPE DUCT	
4x110 HDPE/MDPE DUCT	
SIGNAL CONTROLLER AND CABINET..... SEE APPENDIX 12/5	
JB4 JUNCTION BOX	
MINI PILLAR (FOR ESB CONNECTION)	
JB2 JUNCTION BOX	
PROPOSED MIN 3L CABINET	
PROPOSED INDUCTION LOOP	



**CASTLE VILLAS JUNCTION, DELGANY, Co. WICKLOW.**

**CLIENT**  
 WICKLOW COUNTY COUNCIL

**CONSULTANT**  
 AECOM  
 4th Floor Adelphi Plaza, George's Street  
 Upper, Dun Laoghaire, Co Dublin  
 Tel:+353 (0)1 2383100 Fax:+353(0)1 2383199  
 www.aecom.com

- TRAFFIC SIGNALS NOTES:**
- ALL TRAFFIC SIGNAL POLES TO BE HOUSED IN A SOCKET FOUNDATION SYSTEM TO BE APPROVED BY THE TRAFFIC CONTROL ENGINEER.
  - FOUNDATIONS FOR EACH SIGNAL POLE TO BE DESIGNED BY THE SUPPLIER OF RETENTION SOCKET
  - CHAMBERS ARE BLOCK BUILT TO WCC STANDARD WITH APPROPRIATE FRAME AND COVER
  - DUCTS (CONTINUOUS LINE) ARE SMOOTH BORE 100MM DIA. MDPE (ORANGE, MARKED TRAFFIC SIGNALS) EXCEPT WHEN DETAILED OTHERWISE. NUMBER OF DUCTS BETWEEN CHAMBERS IS INDICATED ADJACENT TO THAT DUCT RUN WITH A NUMBER.
  - TRAFFIC SIGNAL CONTROLLER TO BE SCATS COMPLIANT.
  - PLEASE REFER TO APPENDIX 12/5 OF THE SPECIFICATION FOR FURTHER DETAILS.
  - FOR SIGNAL HEAD CONFIGURATIONS, REFER TO APPENDIX 9A TRAFFIC SIGNS MANUAL 2010.
  - POSITION OF DUCTING AND POLES TO BE AGREED WITH SIGNALS CONTRACTOR AND ENGINEER PRIOR TO TENDER.
  - EXISTING TRAFFIC SIGNALS TO REMAIN OPERATIONAL UNTIL NEW SIGNALS ARE COMMISSIONED. NEW SIGNALS TO REMAIN HOODED UNTIL THEY BECOME OPERATIONAL.
  - CIVILS WORK FOR TRAFFIC SIGNALS INSTALLATION: IN ACCORDANCE WITH THE METHOD OF MEASUREMENT, THE MEASUREMENT OF BILL OF QUANTITIES ITEM 1200.58 SHALL BE THE COMPLETE INSTALLATION. THIS SHALL INCLUDE ALL ITEMS DESCRIBED AND REQUIREMENTS INCLUDED IN APPENDIX 12/5, INCLUDING THE CIVIL WORKS DETAILED IN SECTION 7 BUT EXCLUDING ROAD MARKINGS WHICH ARE ITEMISED SEPARATELY UNDER SERIES 1200.
  - FINAL LOCATION OF INDUCTIVE LOOPS TO BE AGREED ON SITE WITH EMPLOYERS REPRESENTATIVE & WCC.
  - TRAFFIC SIGNALS TO BE INSTALLED TO PROVIDE A MINIMUM LATERAL CLEARANCE OF 450mm FROM THE ADJACENT CARRIAGEWAY EDGE.
  - LOOP FEEDER AERIAL PIECES TO BE 100mm HDPE/MDPE DUCTS
  - EXISTING SIGNAL DUCTING AND CABLING TO BE PROTECTED DURING THE WORKS.

**ISSUE/REVISION**

REV	DATE	DESCRIPTION
D	20.05.2020	REVISED SIGNALS LAYOUT
C	25.02.2020	REVISED SIGNALS LAYOUT
B	21.01.2020	REVISED JUNCTION LAYOUT
A	16.01.2019	ISSUED FOR INFORMATION
IR	DATE	DESCRIPTION

**PROJECT NUMBER**  
 60616266

**SHEET TITLE**  
 PROPOSED JUNCTION LAYOUT

**SHEET NUMBER**  
 PR446385-ACM-XX-00-DR-CE-10-0001

This drawing has been prepared for the use of AECOM's client. It may not be used, modified, reproduced or relied upon by third parties, except as agreed by AECOM or as required by law. AECOM accepts no responsibility and denies any liability whatsoever to any party that uses or relies on this drawing without AECOM's express written consent. All measurements must be obtained from the stated dimensions.