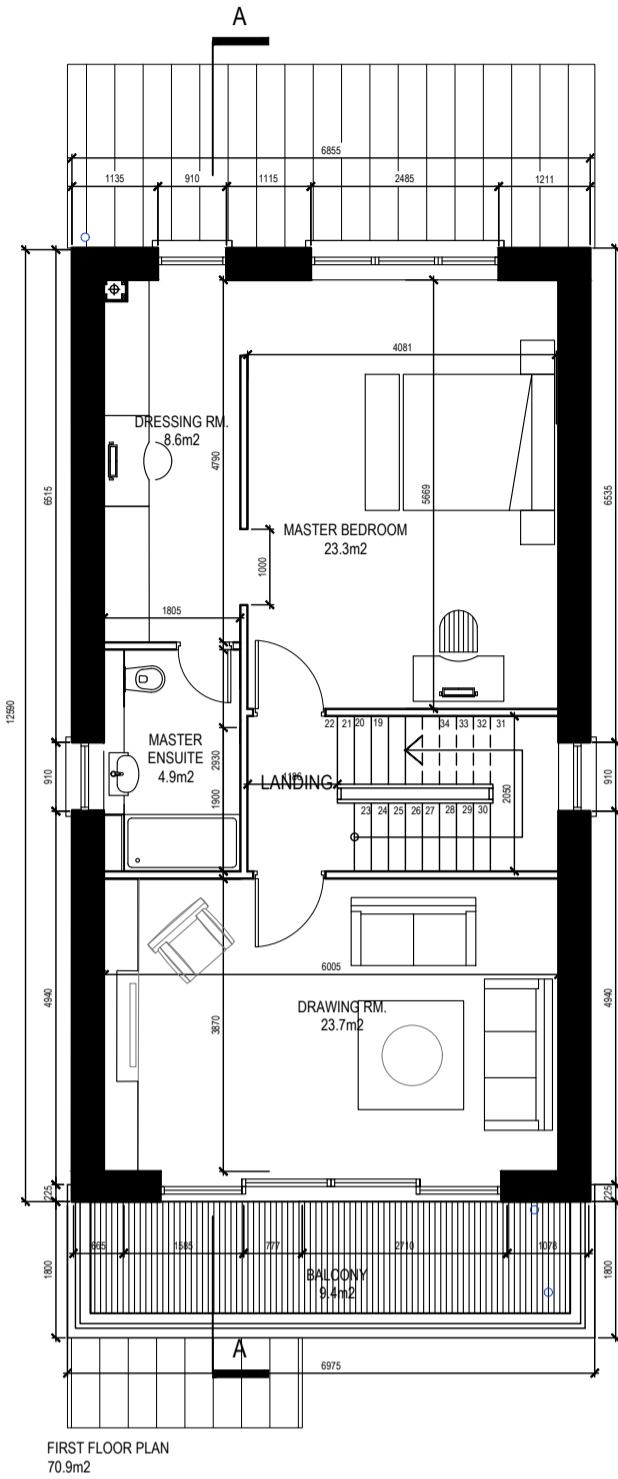
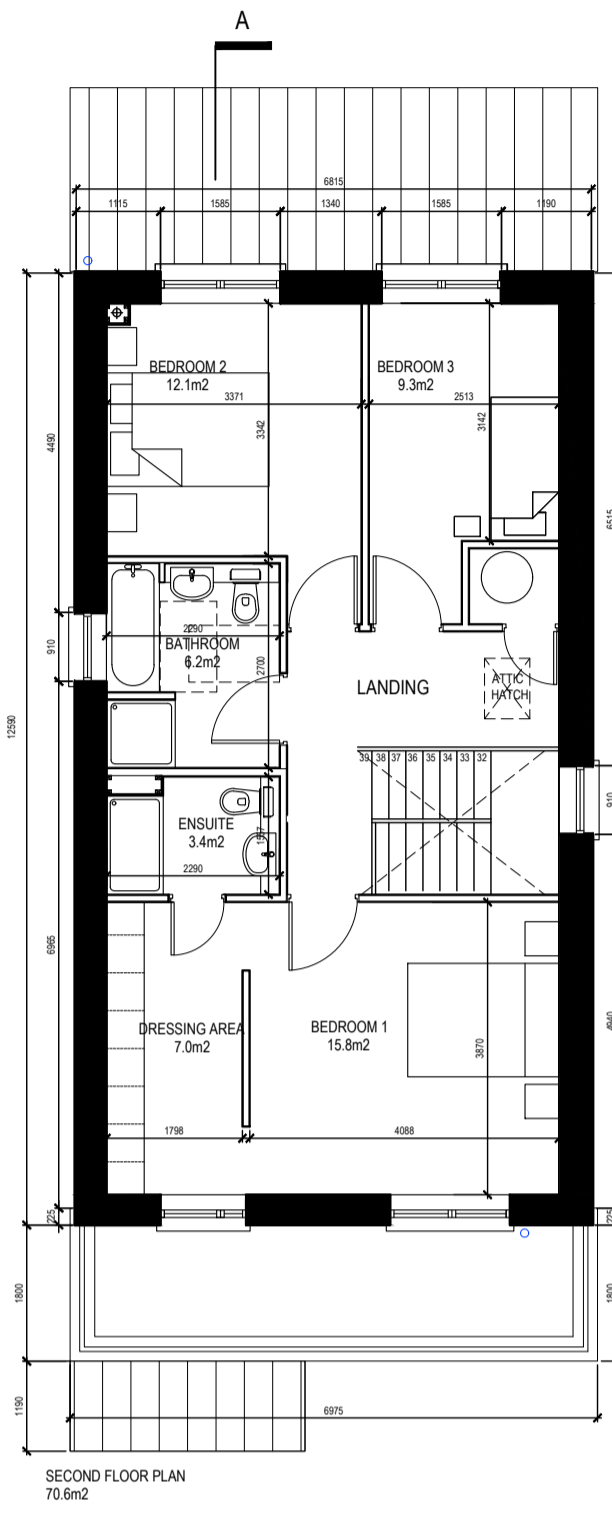


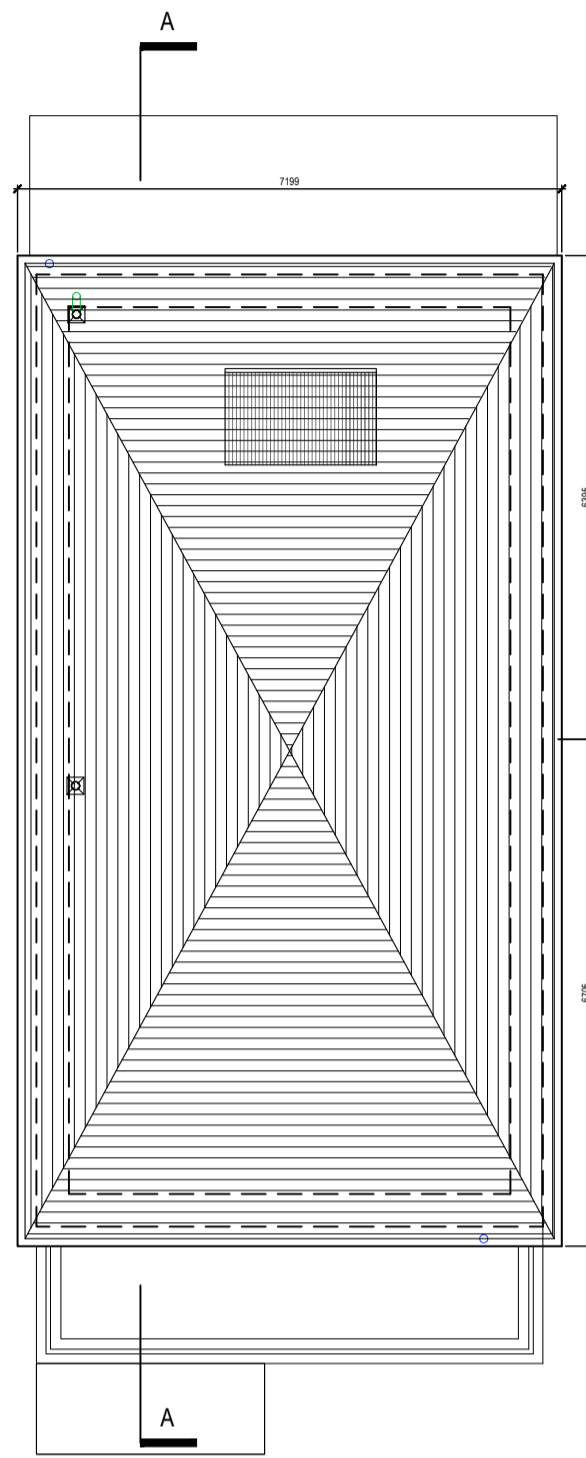
GROUND FLOOR PLAN



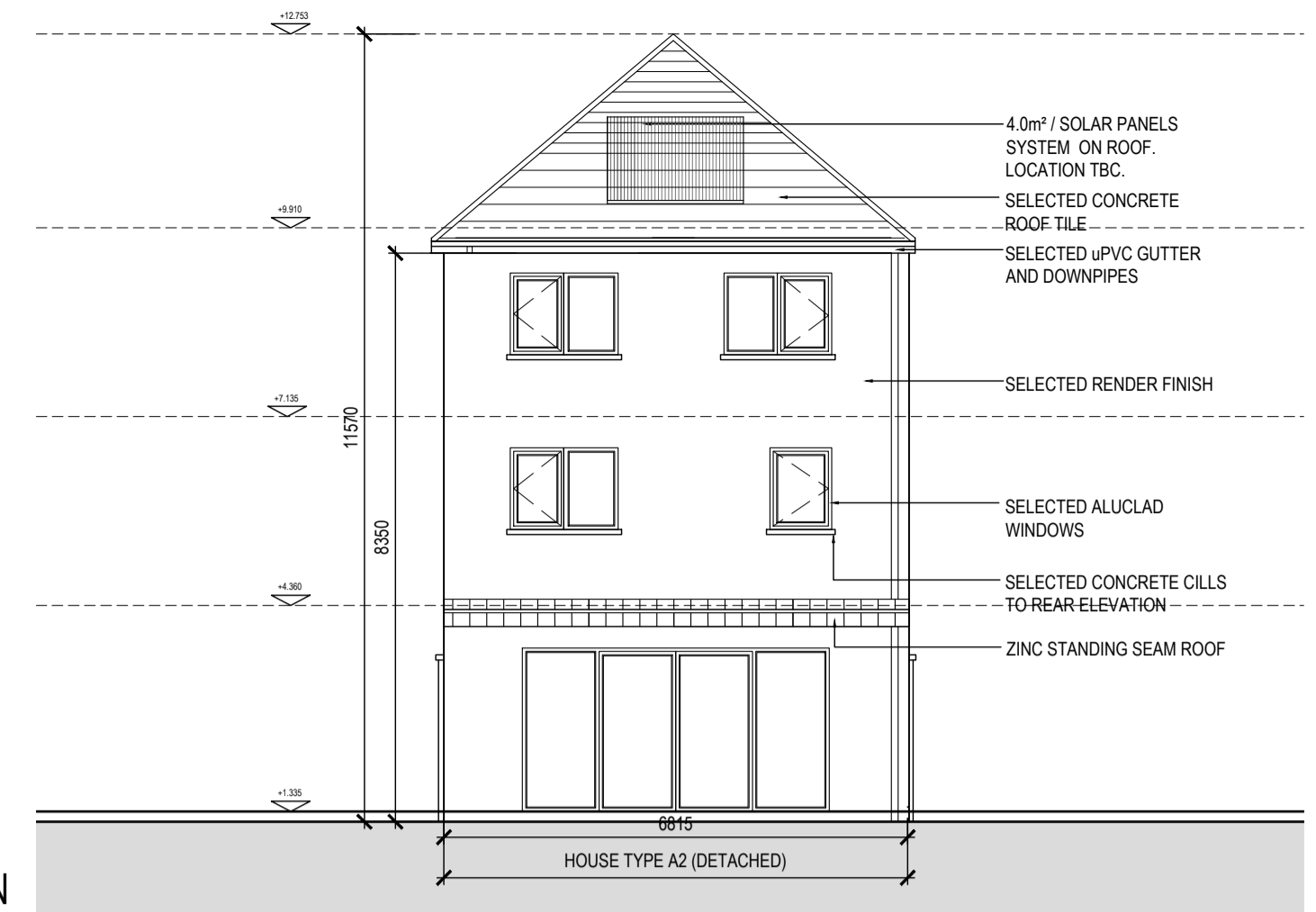
FIRST FLOOR PLAN



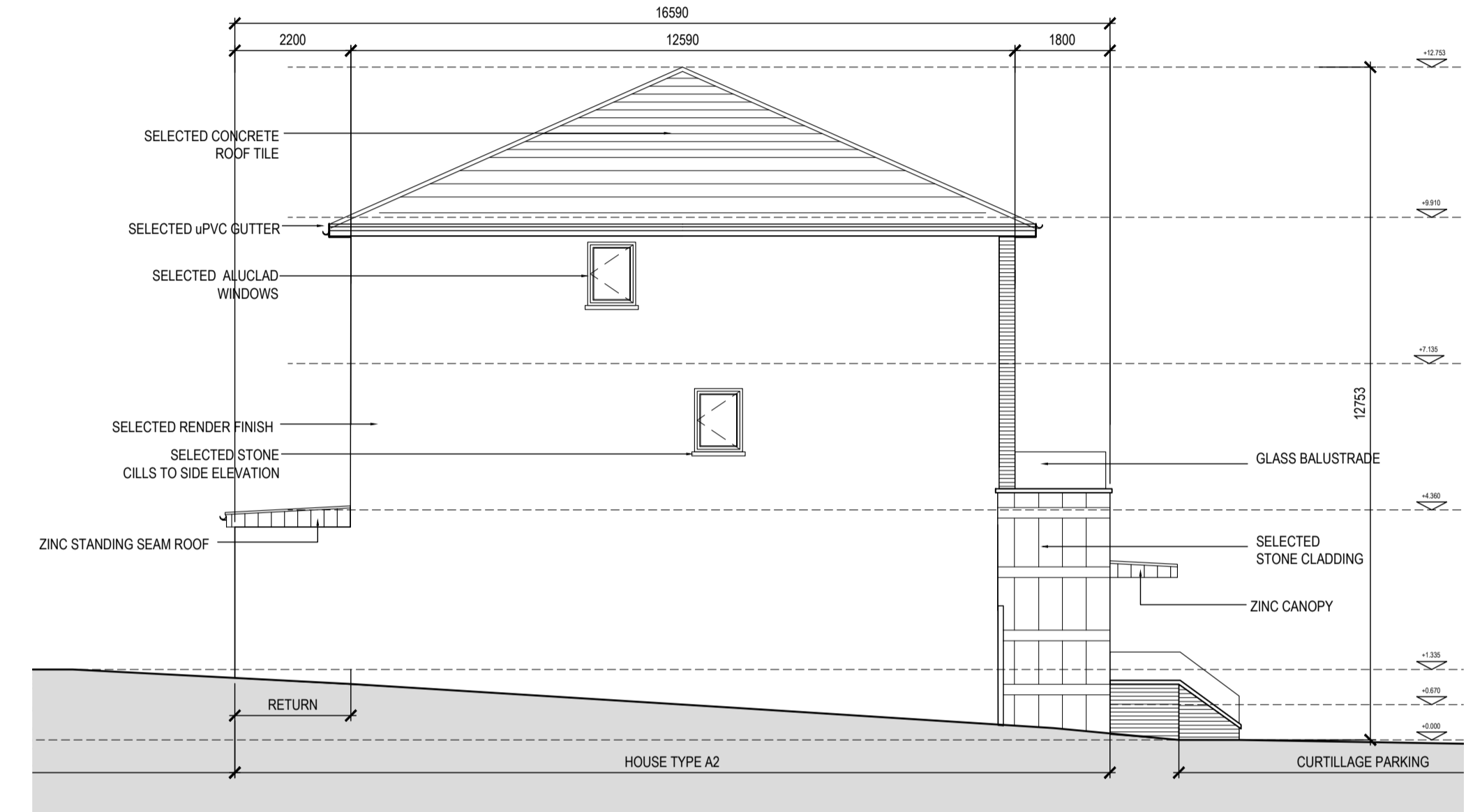
SECOND FLOOR PLAN



ROOF PLAN



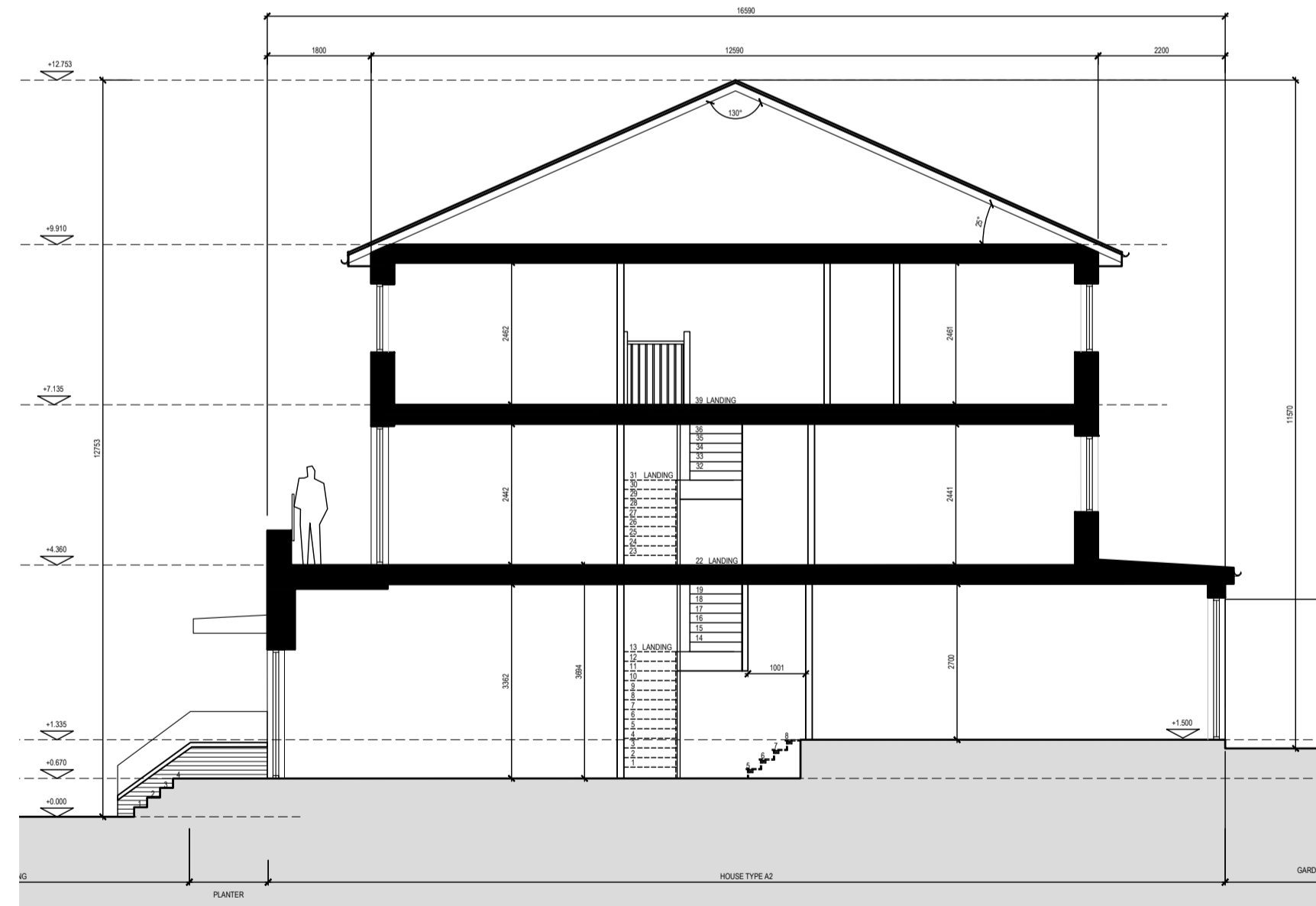
REAR ELEVATION



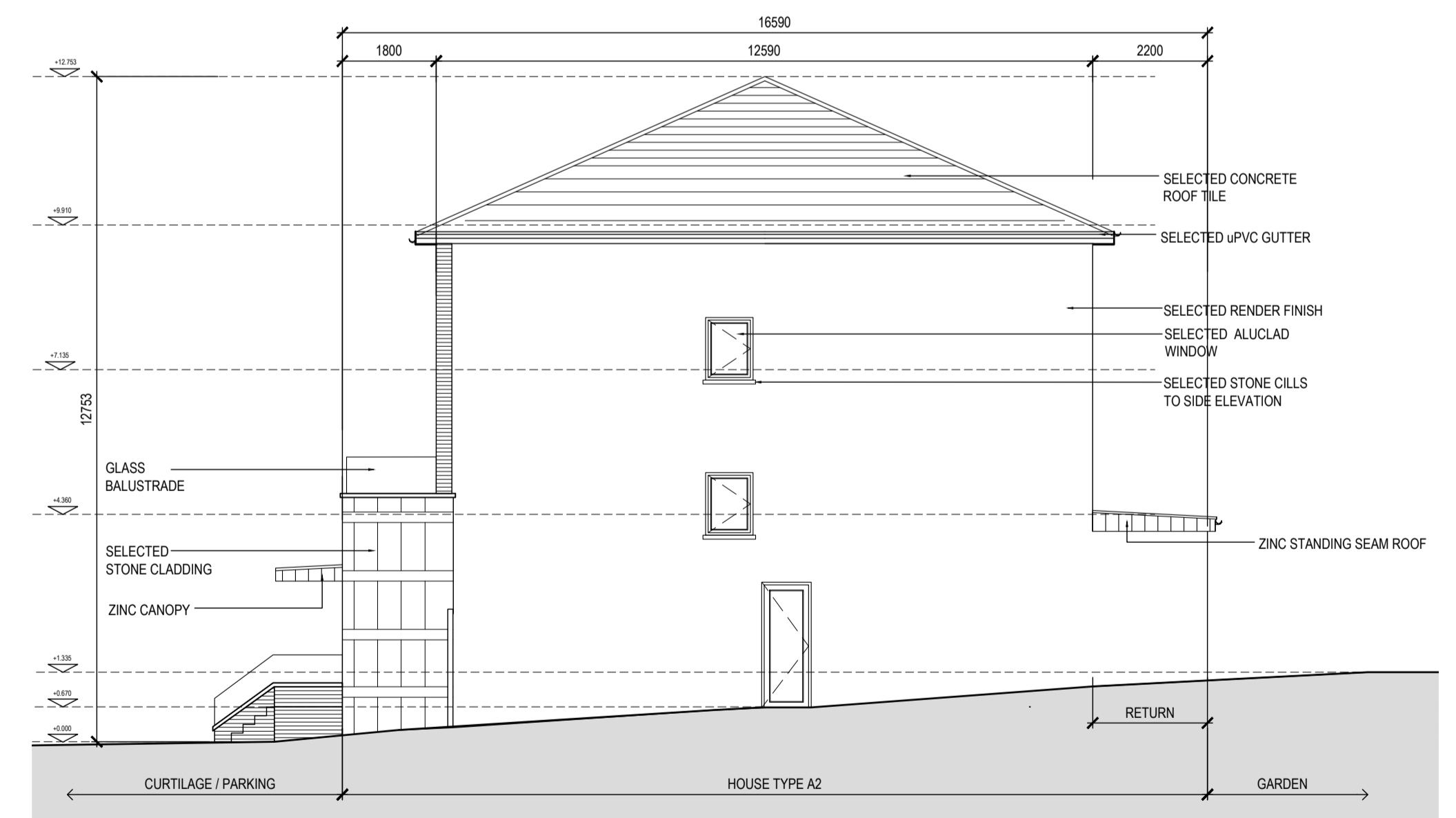
GABLE ELEVATION 01



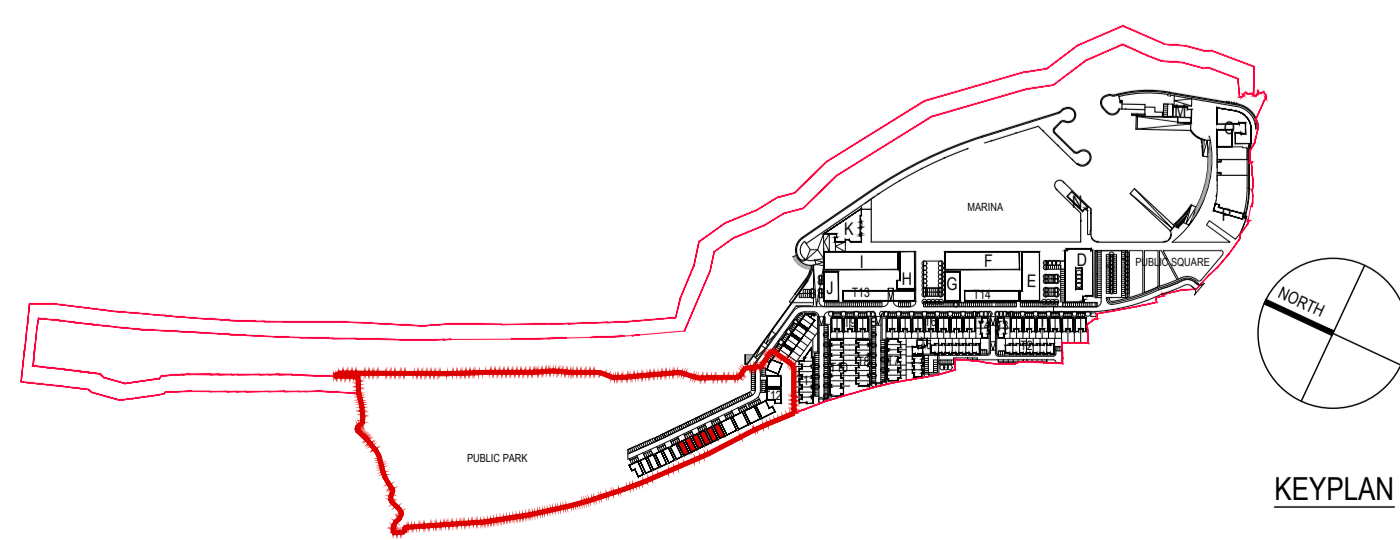
FRONT ELEVATION



SECTION A-A



GABLE ELEVATION 02



KEYPLAN

HOUSE TYPE A2\_AS PROPOSED

NOTE: NUMBER & LOCATION OF STEPS VARY, PLEASE REFER TO SITE PLANS FOR INFORMATION ON LEVELS

Revision Description	Date	Rev. No.	Issued by
Part 8 Submission	24.11.2017	-	SK
Part 8 Submission	05.12.2017	A	SK
Part 8 Submission	08.12.2017	B	SK
Part 8 Submission	11.12.2017	C	SK
Part 8 Submission	06.04.2018	D	SK

**mahony pike**

architecture | urban design | Dublin | Cork

email: info@mahonypike.com | The Chapel | 26 South Mall

tel: +353 1 202 7400 | Mount St. Anne's | Cork City

fax: +353 1 283 0822 | Milltown, Dublin 6 | Co. Cork

www.mahonypike.com | D06 XN52 Ireland | 112 R2RV Ireland

Project No.: 0509 | Scale @ A1 : 1:100

Project Lead: MH | Date Printed: JUNE 2017

Drawn By: SK | Current Rev.: D

Model No.: PP\_HT\_A2

Purpose: PLANNING

Project: MARINA VILLAGE AT GREYSTONES HARBOUR

Location: GREYSTONES HARBOUR, CO. WICKLOW

Client: WICKLOW CO. CO.

Drawing Title: HOUSE TYPE A2\_AS PROPOSED

Drawing No.: 0509\_PP\_HT\_A2

Figured dimensions only to be used. This drawing is copyright of O'Mahony Pike Architects Ltd. All information is shared as per approved use in accordance with BS1192(2007) + A2(2016), Table 5; Standard Codes for Suitability of Models and Documents. If 'Information Approval Check' is empty, this information has been shared at S0 - WIP.

Submittal - Checked By - Date