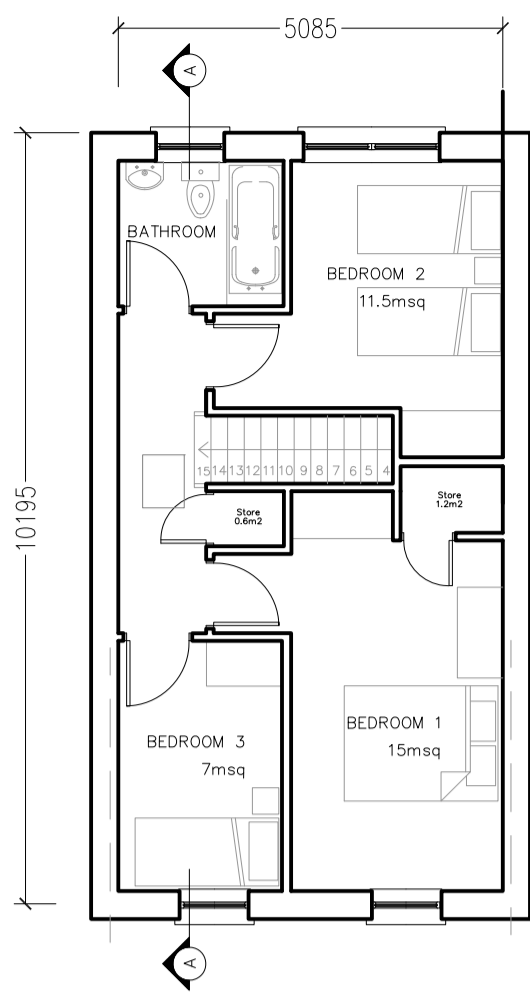
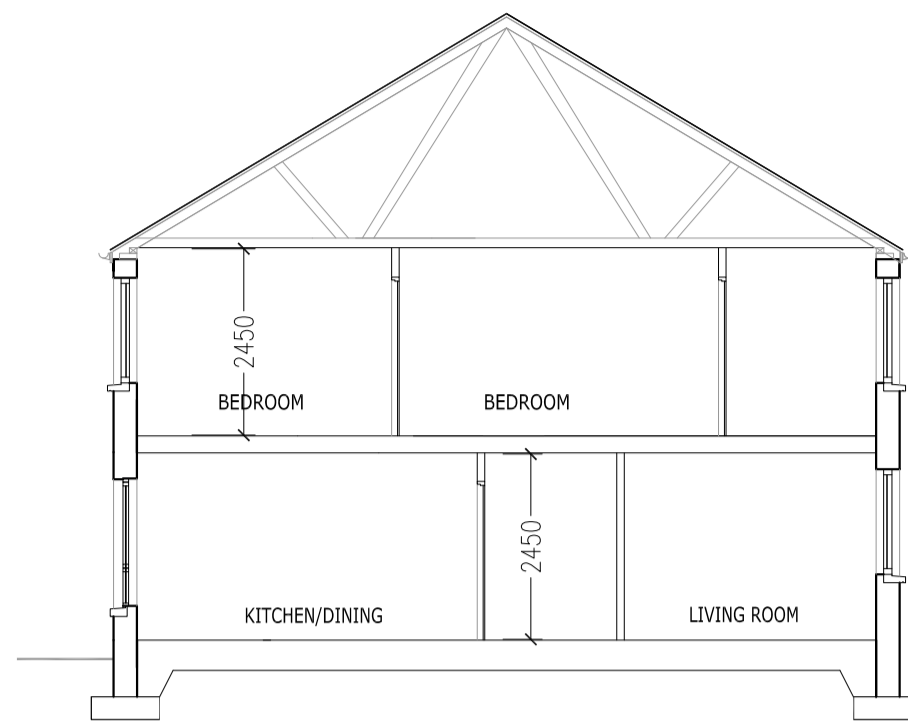


GROUND FLOOR PLAN (House type 2)

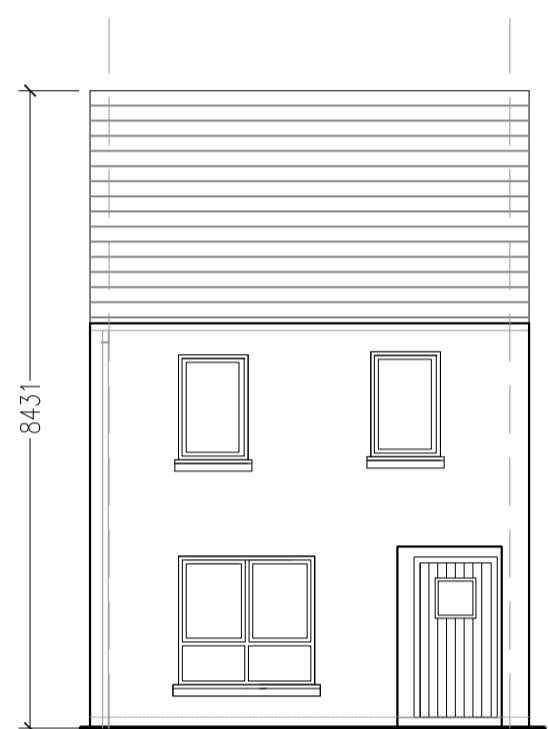


FIRST FLOOR PLAN (House type 2)

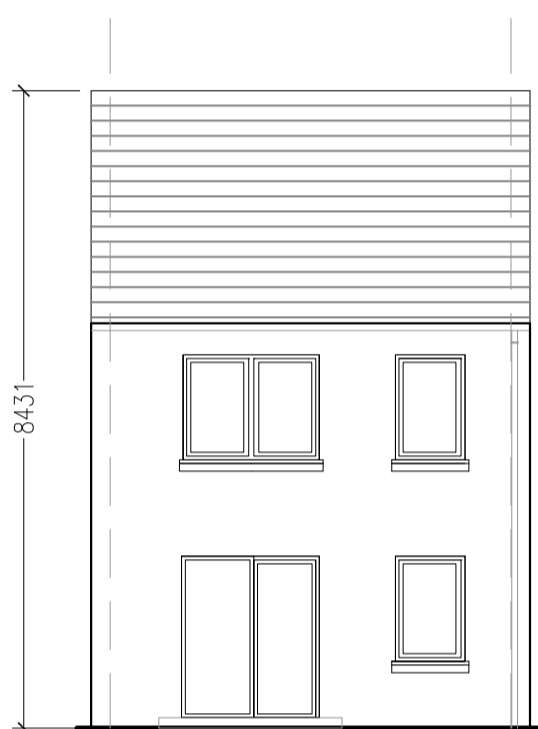
- 3 Bed 5P House Total area - 98msq (92)
- Living - 17msq
- Kitchen - 15msq
- Aggregate living area - 32msq (34)
- Bedroom 1 - 15msq (13)
- Bedroom 2 - 11.5msq
- Bedroom 3 - 7msq
- Aggregate bedroom area 33.5 (32)
- storage - 5msq (5)



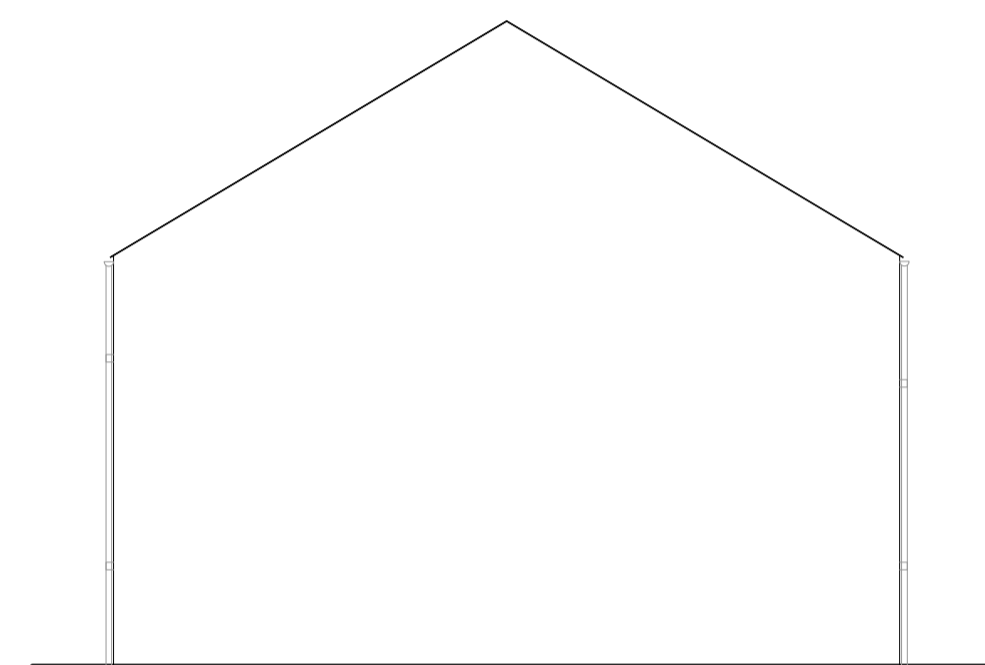
SECTION A-A



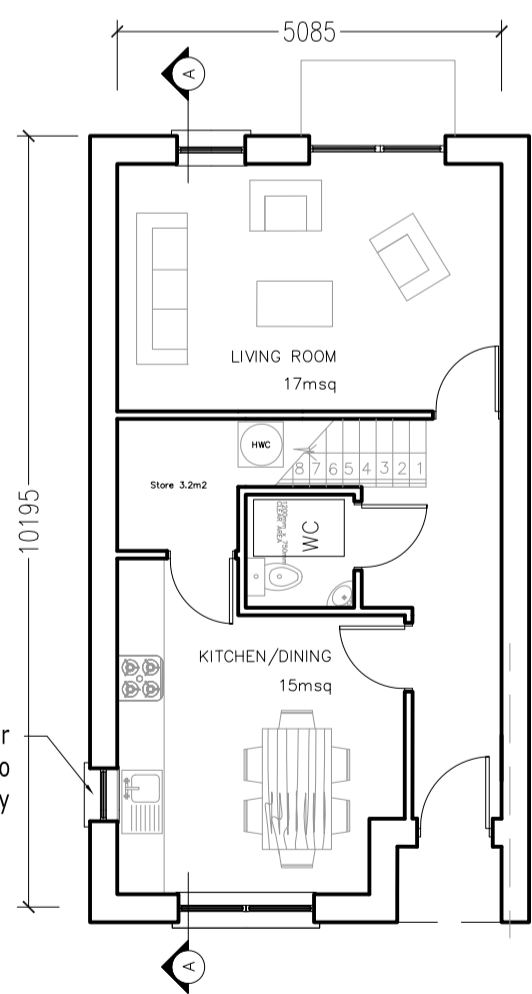
FRONT ELEVATION (House type 2 & 2A)



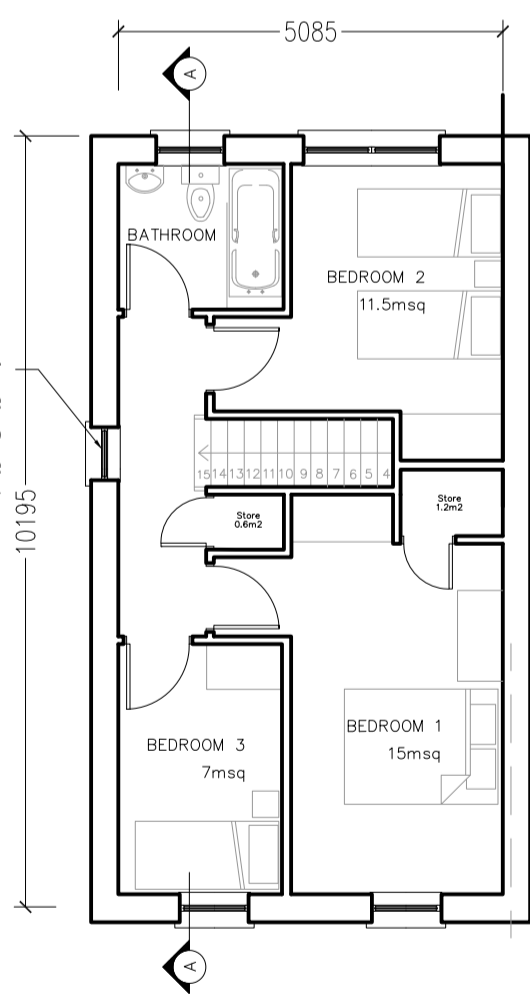
REAR ELEVATION (House type 2 & 2A)



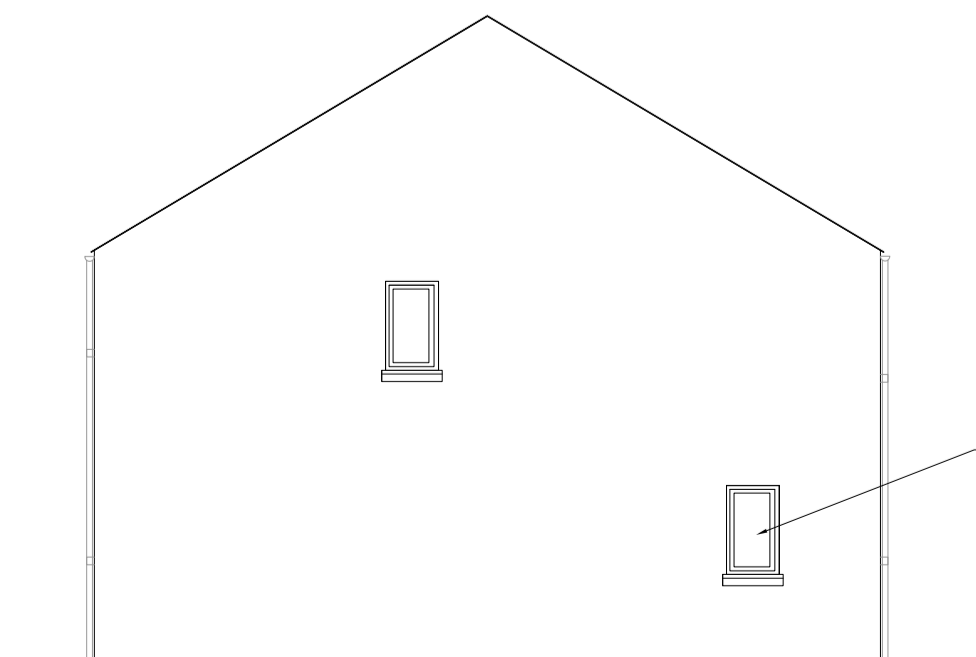
SIDE ELEVATION (House type 2 end gable)



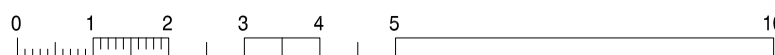
GROUND FLOOR PLAN (House type 2A)



FIRST FLOOR PLAN (House type 2A)



SIDE ELEVATION (House type 2A end gable)



REV:	DATE:	DRN BY:	DESCRIPTION
REVISIONS:			
			<h1>WICKLOW COUNTY COUNCIL</h1>
HOUSING CONSTRUCTION		TEL: 0404 - 20100	
COUNTY BUILDINGS		FAX 0404 - 67792	
WICKLOW			
E-MAIL: cosec@wicklowcoco.ie		www.wicklow.ie	
JOB: Ard na Greine West Ward, Bray Co. Wicklow			
TITLE: House Type 2 & 2A Proposed Plans, Elevations and Section			
SCALE:	1:100	Date:	02/19
DWG NO:	ANG/P/04	Drawn:	EH
SHEET SIZE:	A2	Checked:	
STATUS:	Part 8	REV:	

DO NOT SCALE - USE FIGURED DIMENSION ONLY - ALL DIMENSIONS TO BE CHECKED ON SITE - ORIGINAL SIZE - A2