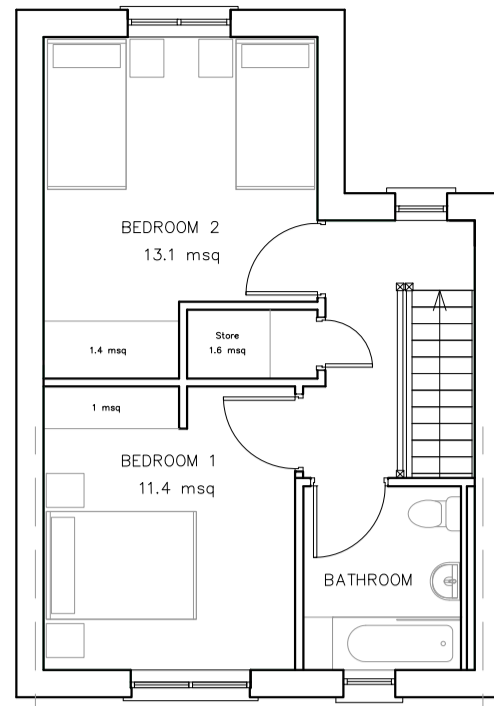
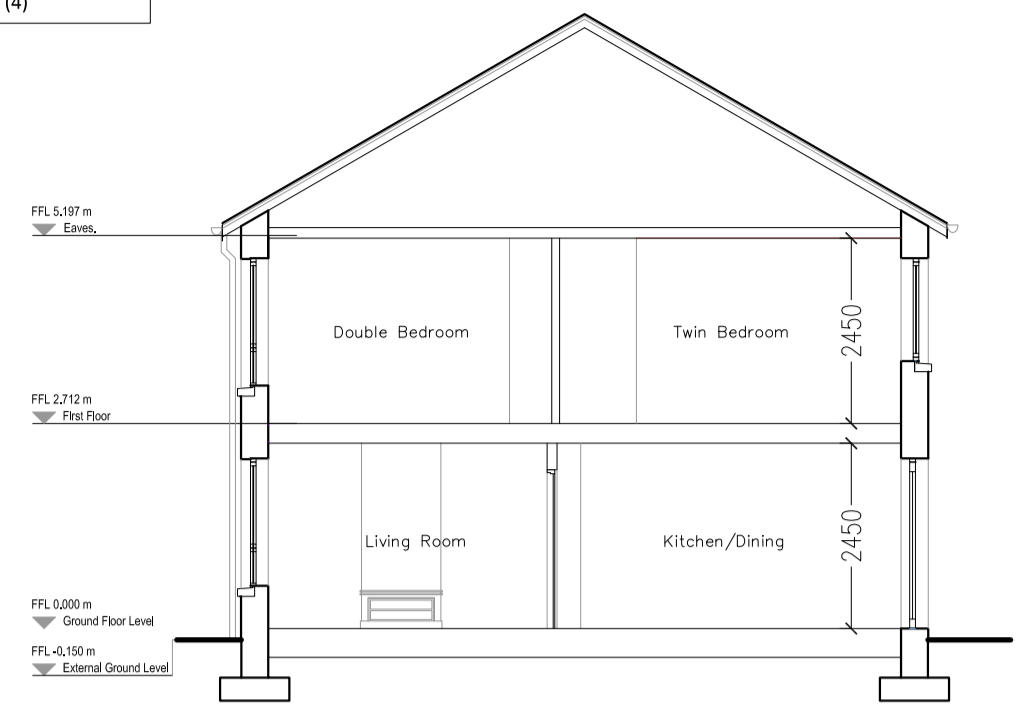


GROUND FLOOR PLAN (House type 2)



FIRST FLOOR PLAN (House type 2)

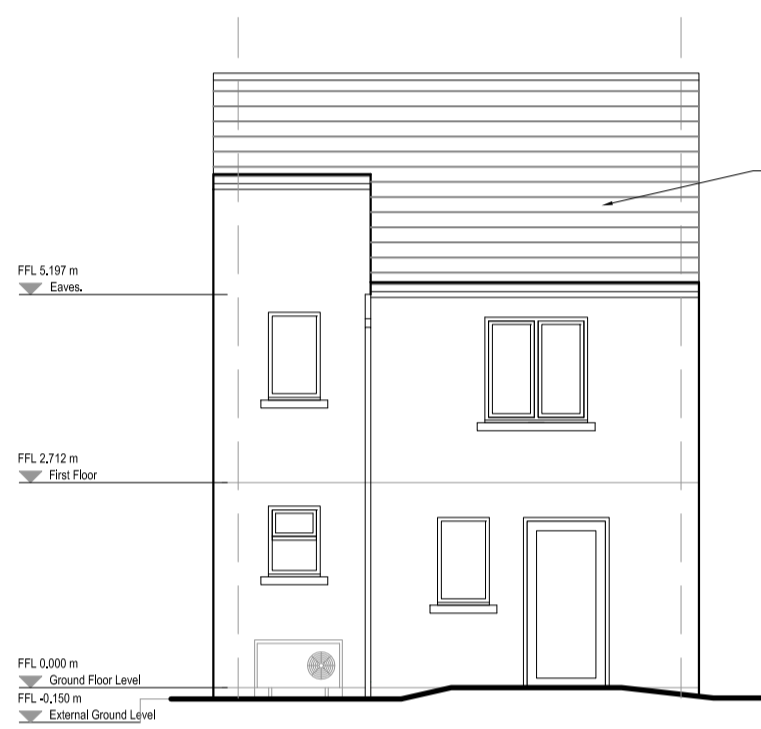
- 2 Bed 4P House Total area - 81msq (80)
- Living - 13msq (13)
- Kitchen - 16msq
- Aggregate living area - 29msq (30)
- Bedroom 1 - 11.4sq (11.4)
- Bedroom 2 - 13.1 (13)
- Aggregate bedroom area 24.5 (25)
- storage - 4.85msq (4)



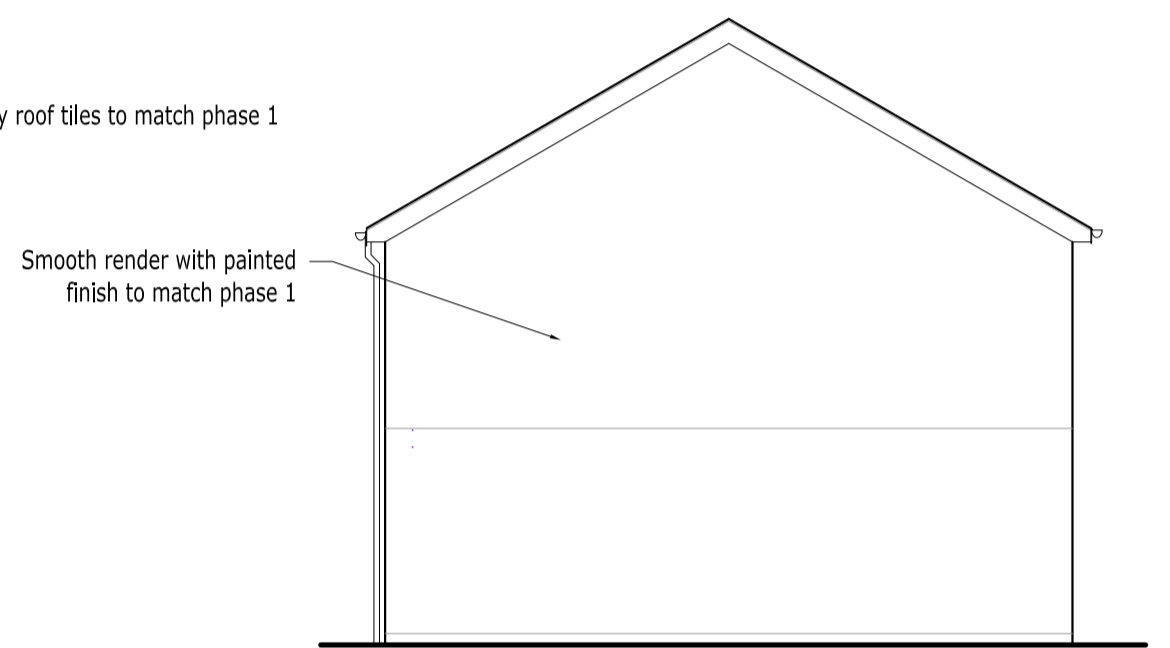
SECTION A-A



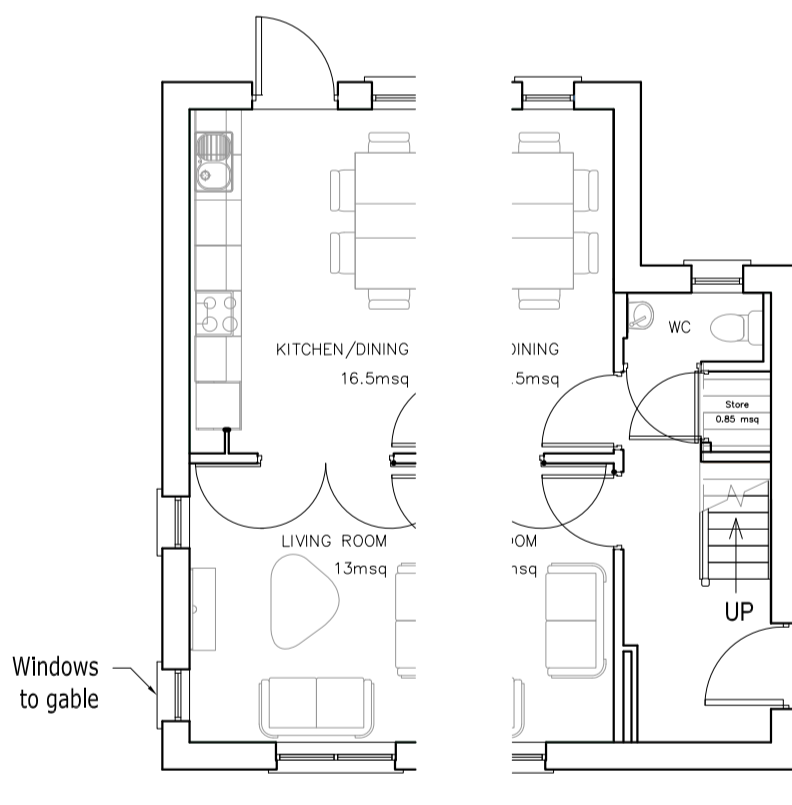
FRONT ELEVATION (House type 2 & 2A)



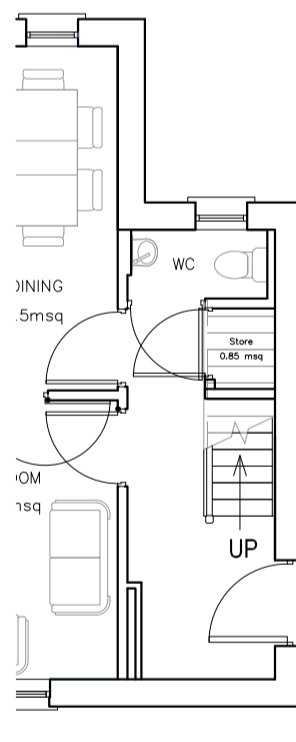
REAR ELEVATION (House type 2, 2A & 2B)



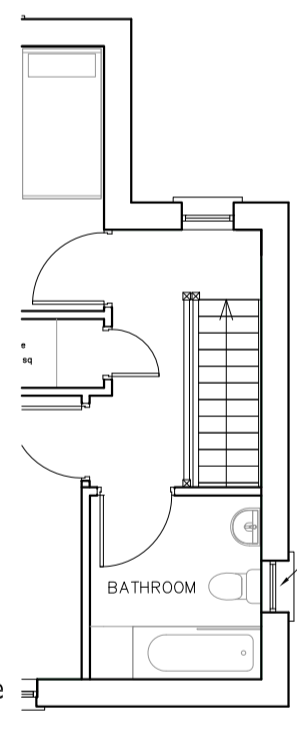
SIDE ELEVATION (House type 2 - end terrace)



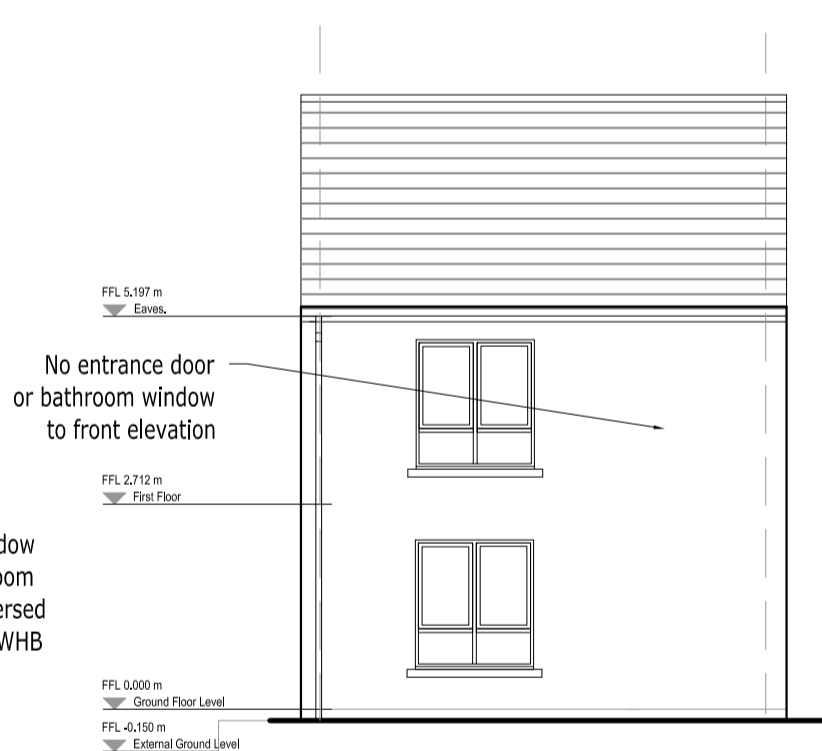
GROUND FLOOR PLAN (House type 2A)



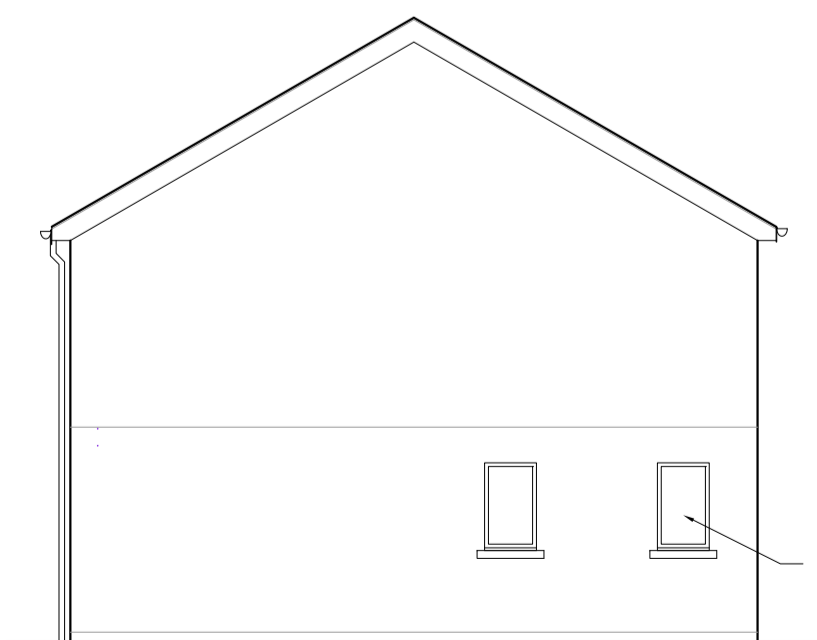
GROUND FLOOR PLAN (House type 2B)



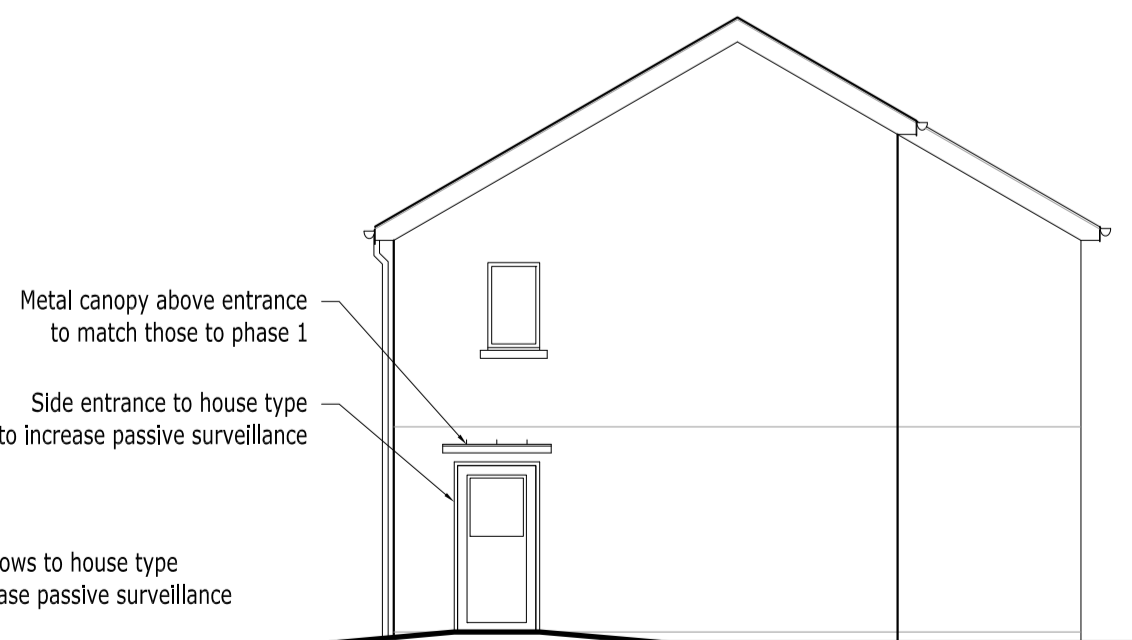
FIRST FLOOR PLAN (House type 2B)



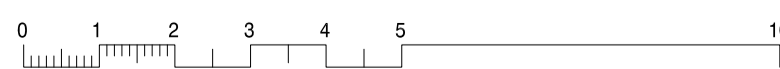
FRONT ELEVATION (House type 2B)



SIDE ELEVATION (House type 2A - end terrace)



SIDE ELEVATION (House type 2B - end terrace)



REV:	DATE:	DRN BY:	DESCRIPTION
REVISIONS:			
 WICKLOW COUNTY COUNCIL			
HOUSING CONSTRUCTION		TEL: 0404 - 20100	
COUNTY BUILDINGS		FAX 0404 - 67792	
WICKLOW			
E-MAIL: cosec@wicklowcoco.ie		www.wicklow.ie	
JOB: Avondale Heights Phase 2			
Rathdrum			
Co. Wicklow			
TITLE: House Type 2, 2A & 2B			
Proposed Plans, Elevations and Section			
SCALE: 1:100	Date: 02/19		
DWG NO: OPCD/P2/04	Drawn: EH		
SHEET SIZE: A2	Checked:		
STATUS: Stage 1	REV:		

DO NOT SCALE - USE PROVIDED DIMENSION ONLY - ALL DIMENSIONS TO BE CHECKED ON SITE - ORIGINAL SIZE - A2