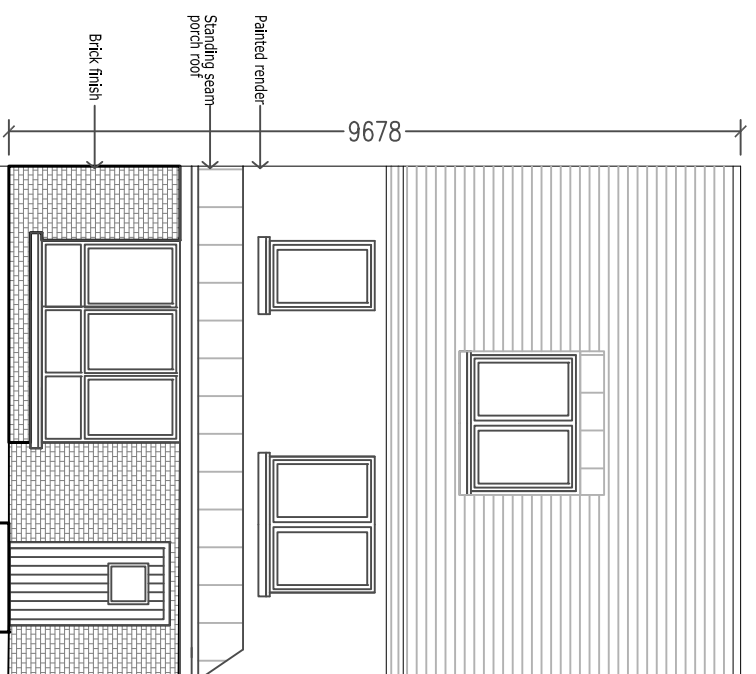
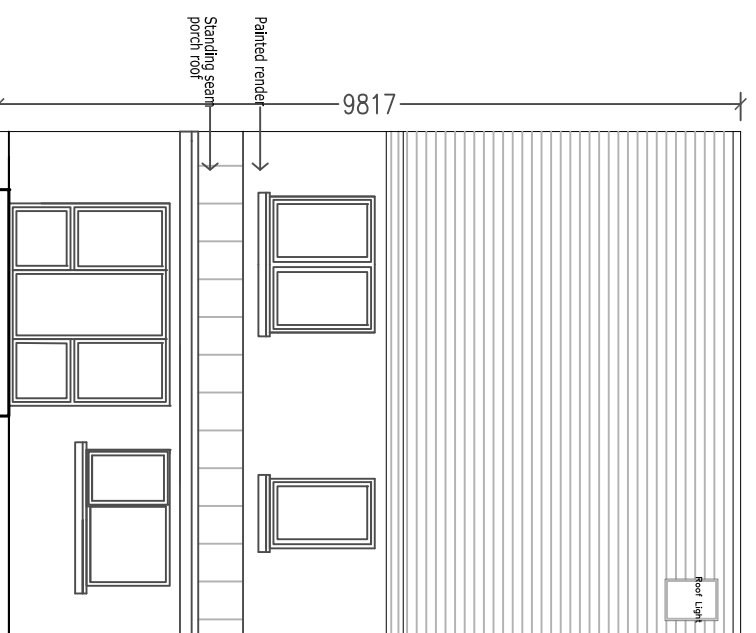


A1-4B

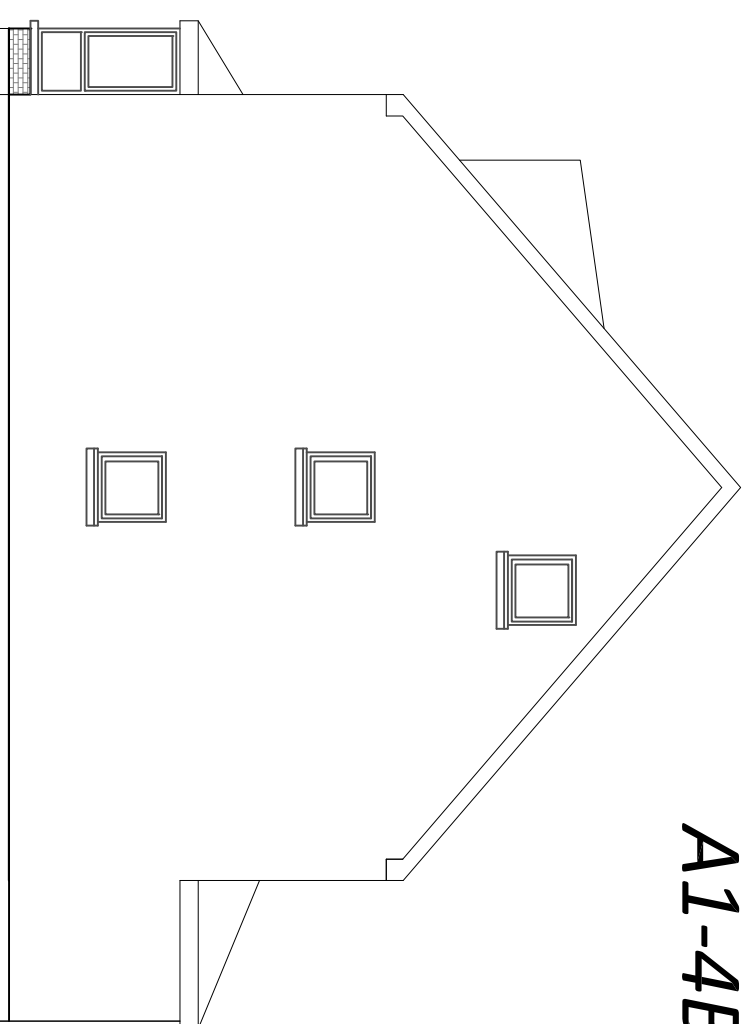
- 4 Bed 7P Unit Total area - 167msq
- Living - 21.5msq
- Kitchen/Dining - 30msq
- Aggregate living area - 51.5msq
- Bedroom 1 - 15.3msq
- Bedroom 2 - 12.7msq
- Bedroom 3 - 12msq
- Bedroom 4 - 20msq
- storage - 16.7msq



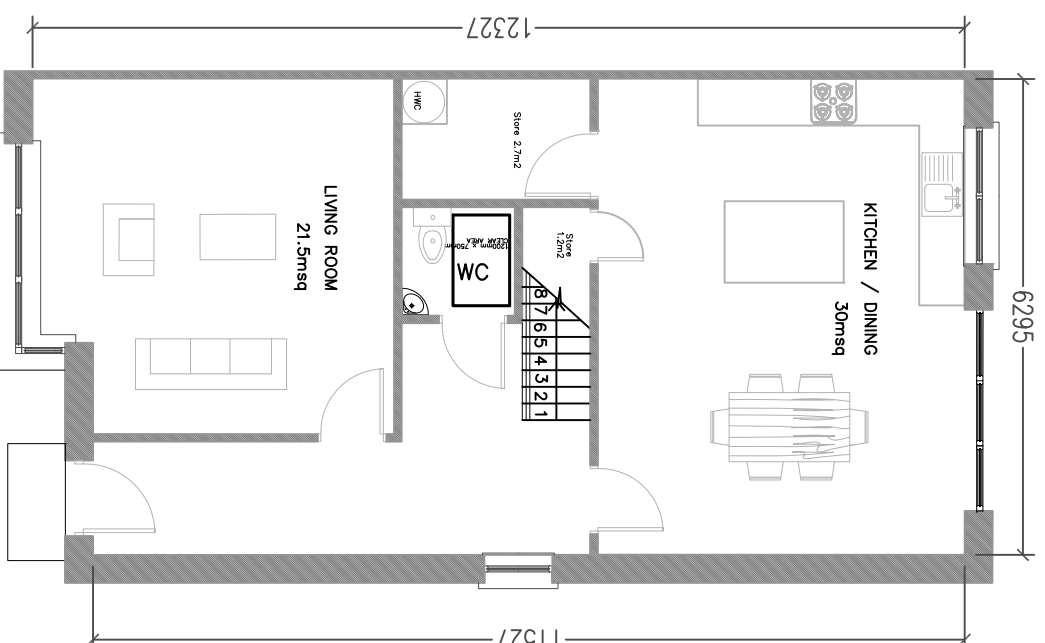
FRONT ELEVATION



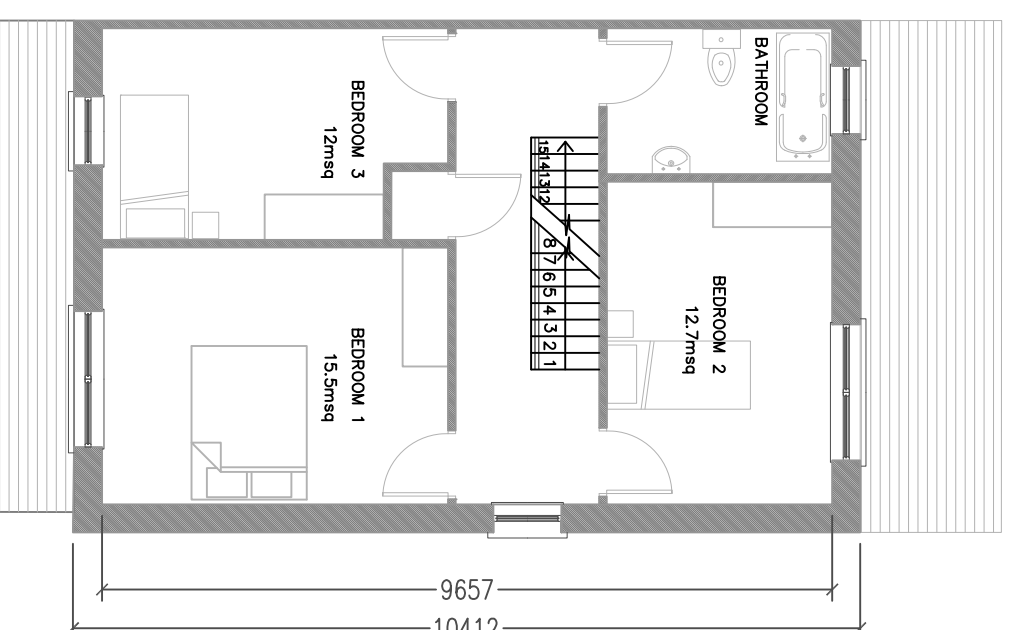
REAR ELEVATION



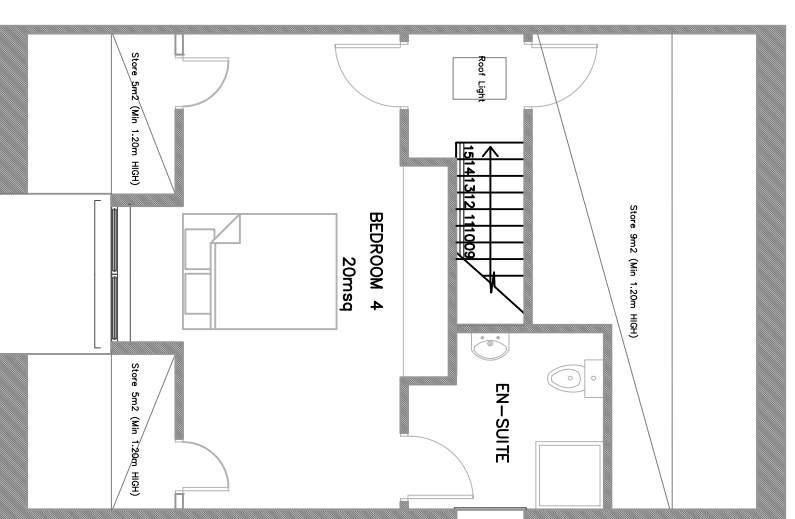
SIDE ELEVATION



GROUND FLOOR PLAN
Area = 75 sqm

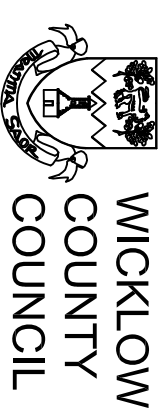


FIRST FLOOR PLAN
Area = 61 sqm



SECOND FLOOR PLAN
Area = 31 sqm
(Exclude Storage Area)

REV.	DATE:	BY:	DRN	DESCRIPTION
REVISIONS:				



HOUSING CONSTRUCTION TEL:0404 - 20100
COUNTY BUILDINGS FAX 0404 - 67792
WICKLOW

E-MAIL housing2@wicklowcoco.ie www.wicklow.ie

JOB:
**HOUSING AT BURNABY MILLS
GREYSTONES CO. WICKLOW**

TITLE:
**TYPE A1-4BED
PLANS & ELEVATIONS**

SCALE:	1:100	Date:	FEB 2019
DWG NO.:	B.M.G.-P8-101	Drawn:	AM
SHEET SIZE:	A3	Checked:	
STATUS:	PART 8	REV:	*