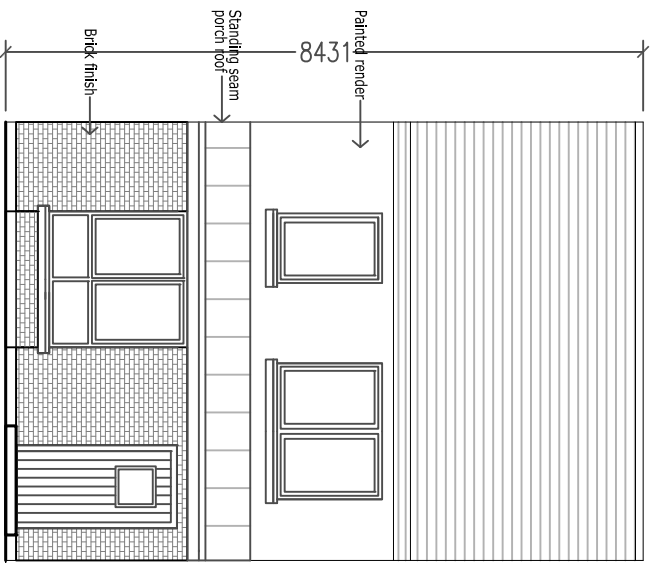
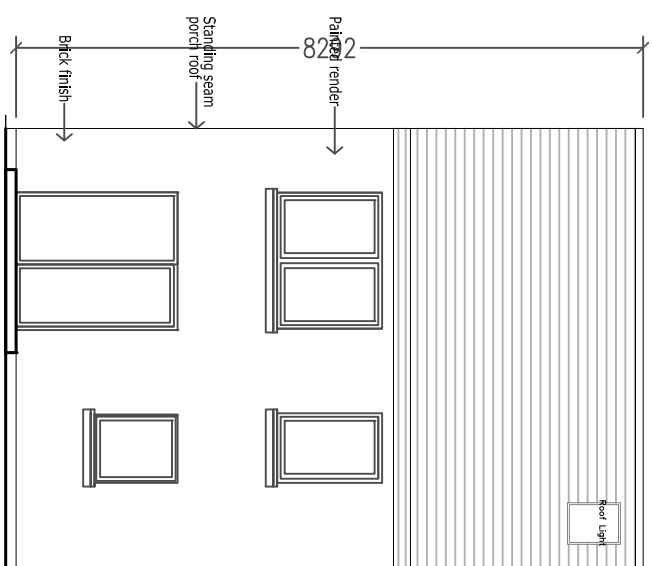


B2-3B

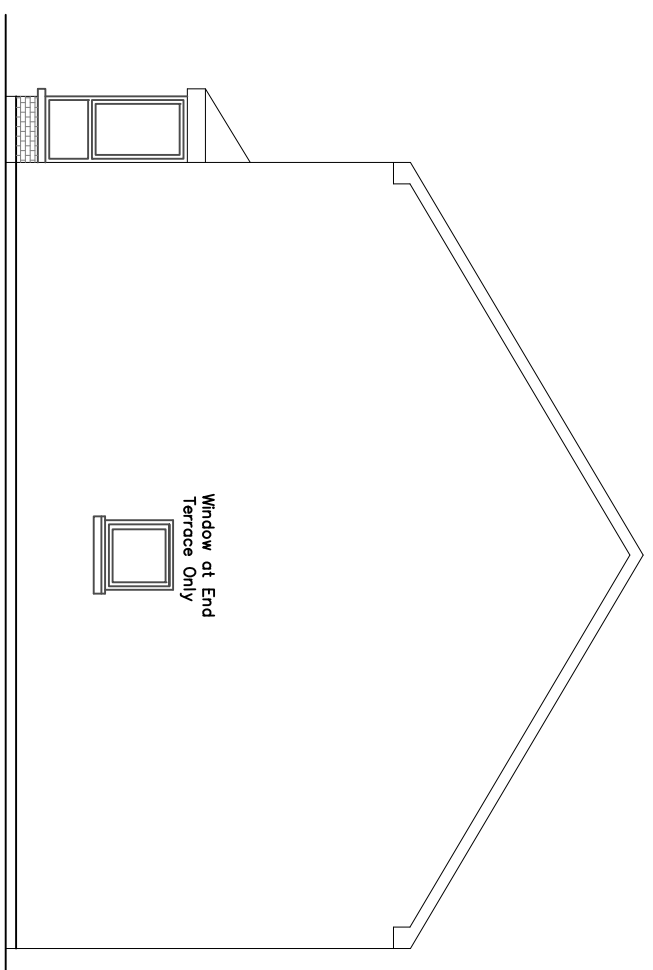
- 3 Bed SP Unit Total area - 109msq
- Living - 18msq
- Kitchen/Dining - 18msq
- Aggregate living area - 36msq
- Bedroom 1 - 17msq
- Bedroom 2 - 13.3msq
- Bedroom 3 - 7msq
- storage - 4.5msq



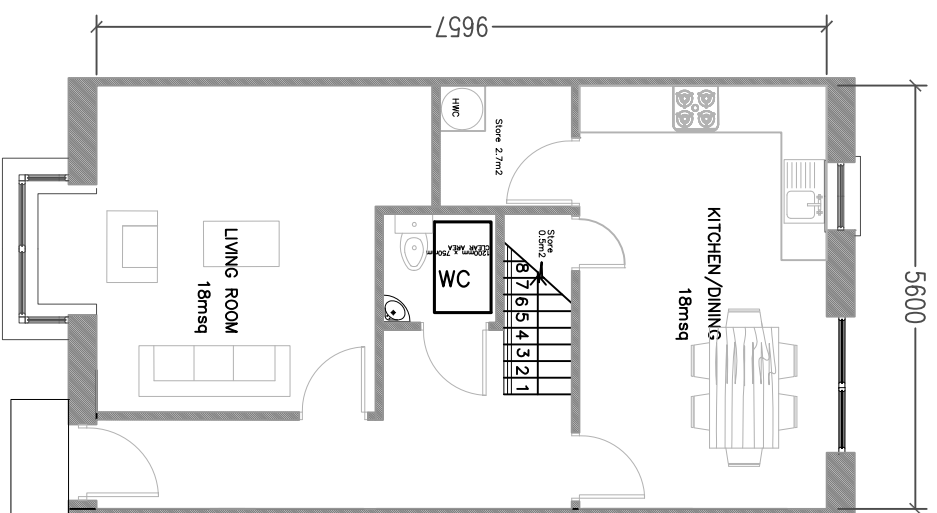
FRONT ELEVATION



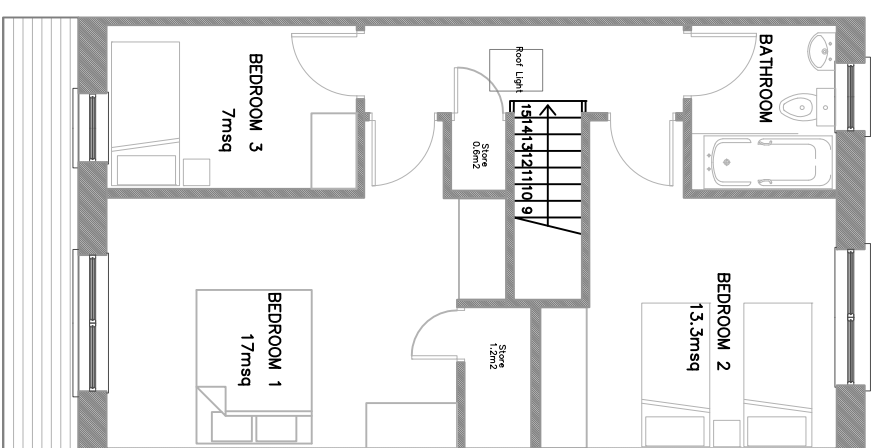
REAR ELEVATION



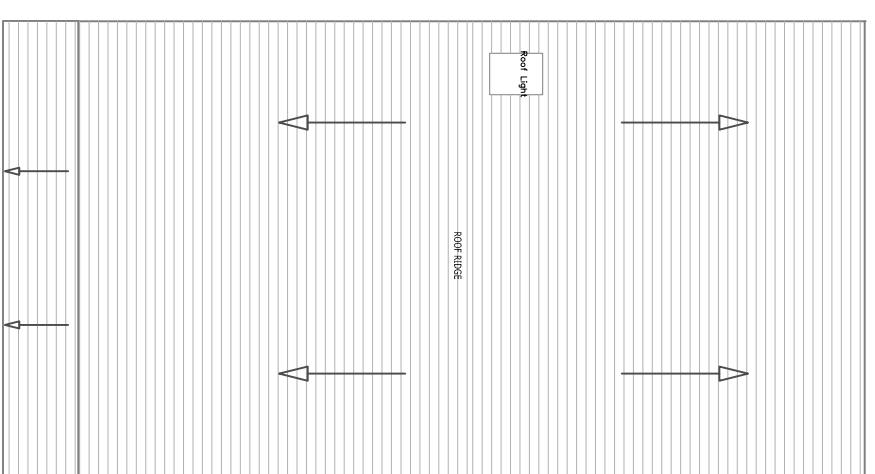
SIDE ELEVATION



GROUND FLOOR PLAN
Area = 55 sqm

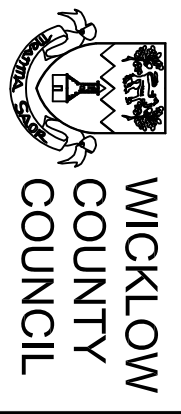


FIRST FLOOR PLAN
Area = 54 sqm



ROOF PLAN

REV.	DATE	BY:	DRN	DESCRIPTION
REVISIONS:				



HOUSING CONSTRUCTION TEL: 0404 - 20100
 COUNTY BUILDINGS FAX: 0404 - 67792
 WICKLOW
 E-MAIL: housing2@wicklowcoco.ie www.wicklow.ie

JOB: HOUSING AT BURNABY MILLS
 GREYSTONES CO. WICKLOW
 TITLE: TYPE B2-3BED
 PLANS & ELEVATIONS

SCALE: 1:100	Date: FEB 2019
DWG NO: B.M.G.-P8-P102	Drawn: AM
SHEET SIZE: A3	Checked:
STATUS: PART 8	REV *