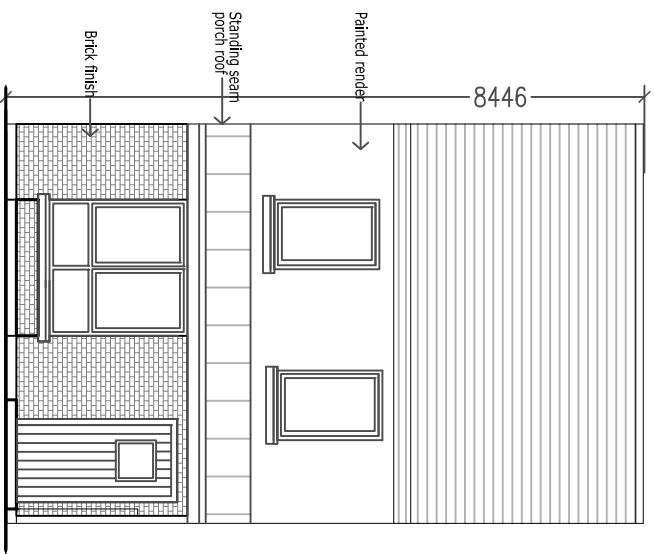
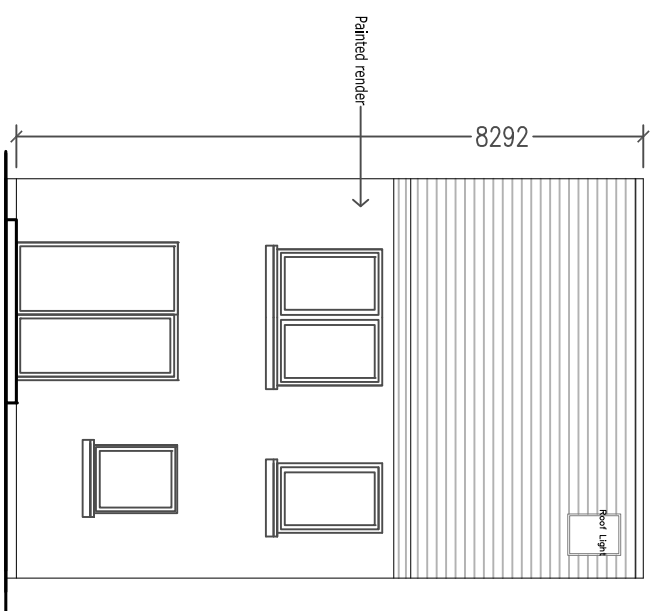


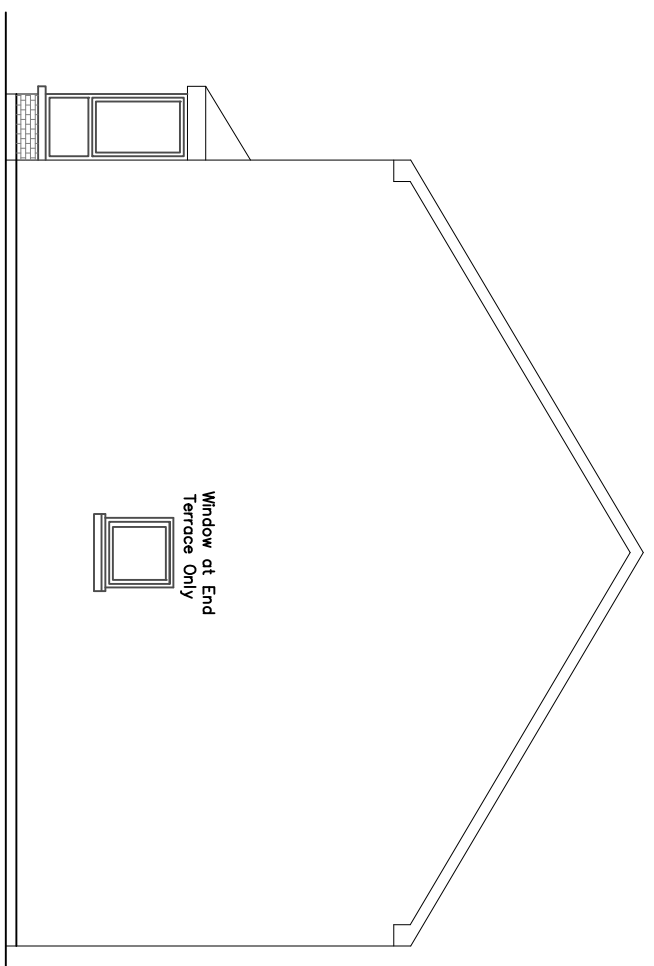
B3-3B



FRONT ELEVATION

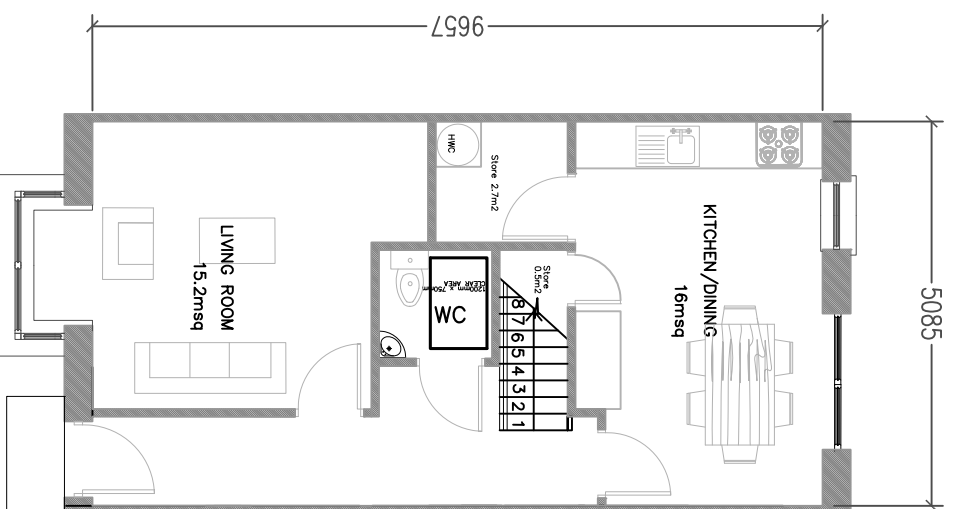


REAR ELEVATION

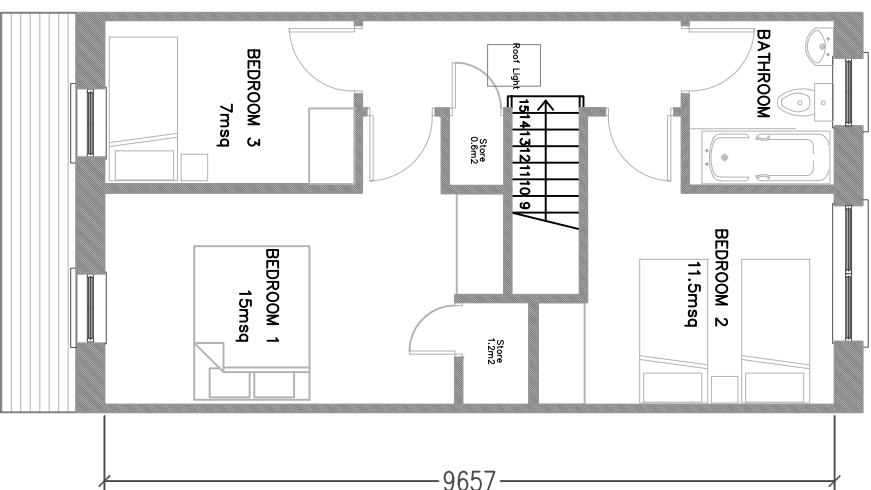


SIDE ELEVATION

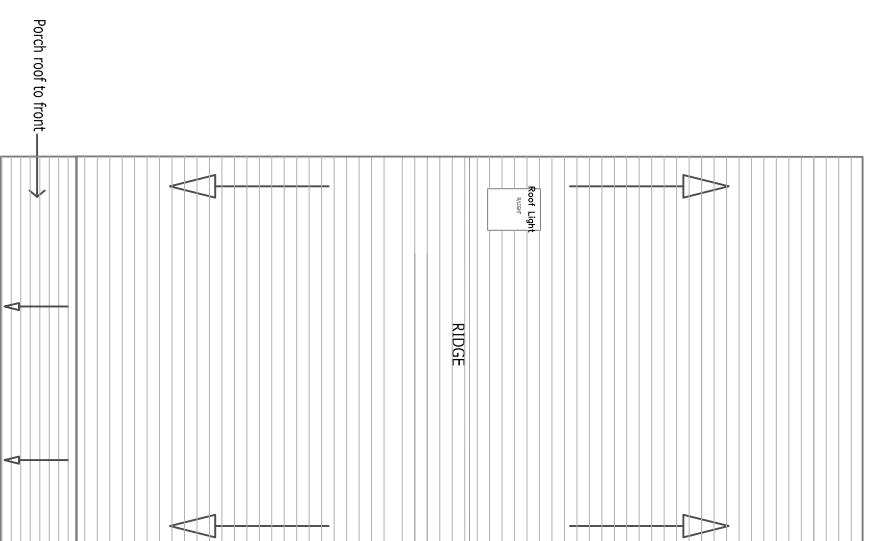
- 3 Bed 5P Unit Total area - 99msq
- Living Room - 15.2msq
- Kitchen/Dining - 16msq
- Aggregate living area - 31.2msq
- Bedroom 1 - 15msq
- Bedroom 2 - 11.5msq
- Bedroom 3 - 7msq
- storage - 4.5msq




GROUND FLOOR PLAN
Area = 50 sqm



FIRST FLOOR PLAN
Area = 49 sqm



ROOF PLAN

REV:	DATE:	BY:	DRN	DESCRIPTION
REVISIONS:				
 WICKLOW COUNTY COUNCIL				
HOUSING CONSTRUCTION TEL: 0404 - 20100 COUNTY BUILDINGS FAX: 0404 - 67792 WICKLOW E-MAIL: housing2@wicklowcoco.ie www.wicklow.ie				
JOB: HOUSING AT BURNABY MILLS GREYSTONES CO. WICKLOW				
TITLE: TYPE B3- 3BED PLANS & ELEVATIONS				
SCALE:	1:100	DATE:	FEB 2019	
DWG NO.:	B.M.G.-P8-104	DRAWN:	AM	
SHEET SIZE:	A3	CHECKED:		
STATUS:	PART 8			
REV:	*			