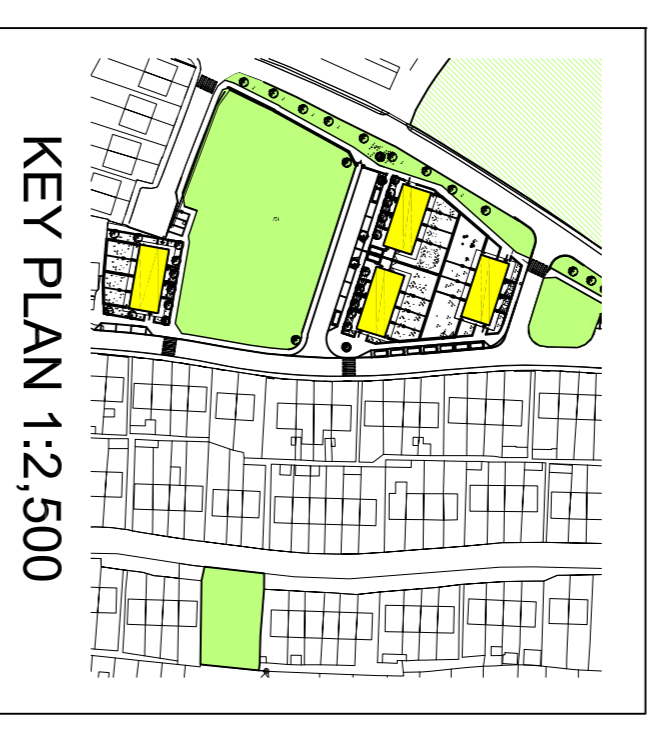


PART 8
Drawing No 3



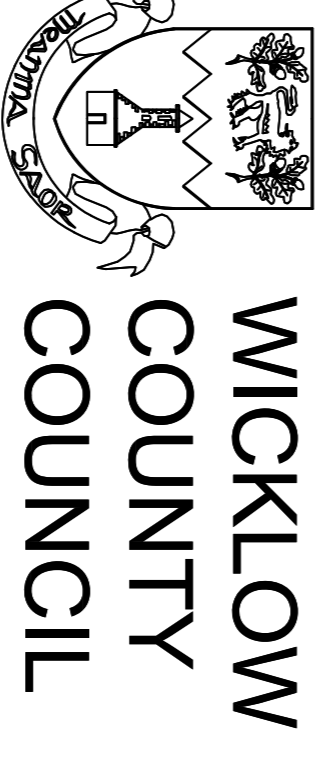
KEY:

- B = BEDROOM
- B1 = BEDROOM NO1
- B2 = BEDROOM NO2
- ST. = STORE ROOM
- BA. = BATHROOM
- L+D. = LIVING ROOM
- K+D. = KITCHEN AND DINING ROOM
- H. = HALL
- WC = TOILET
- F.F. = FRIDGE FREEZER
- W.M.C. = WASHING MACHINE
- D.W. = DRYER
- 150000A = WHEELCHAIR ACCESSIBLE TURNING

REVISIONS:

#BY:	DATE:	DESCRIPTION
0BC	30/11/18	TO CIVILS ENG
1DC	19-02-19	STAGE 1 DOE
2DC	24-7-19	PART 8 APPLICATION

REV. DATE: BY: DESCRIPTION

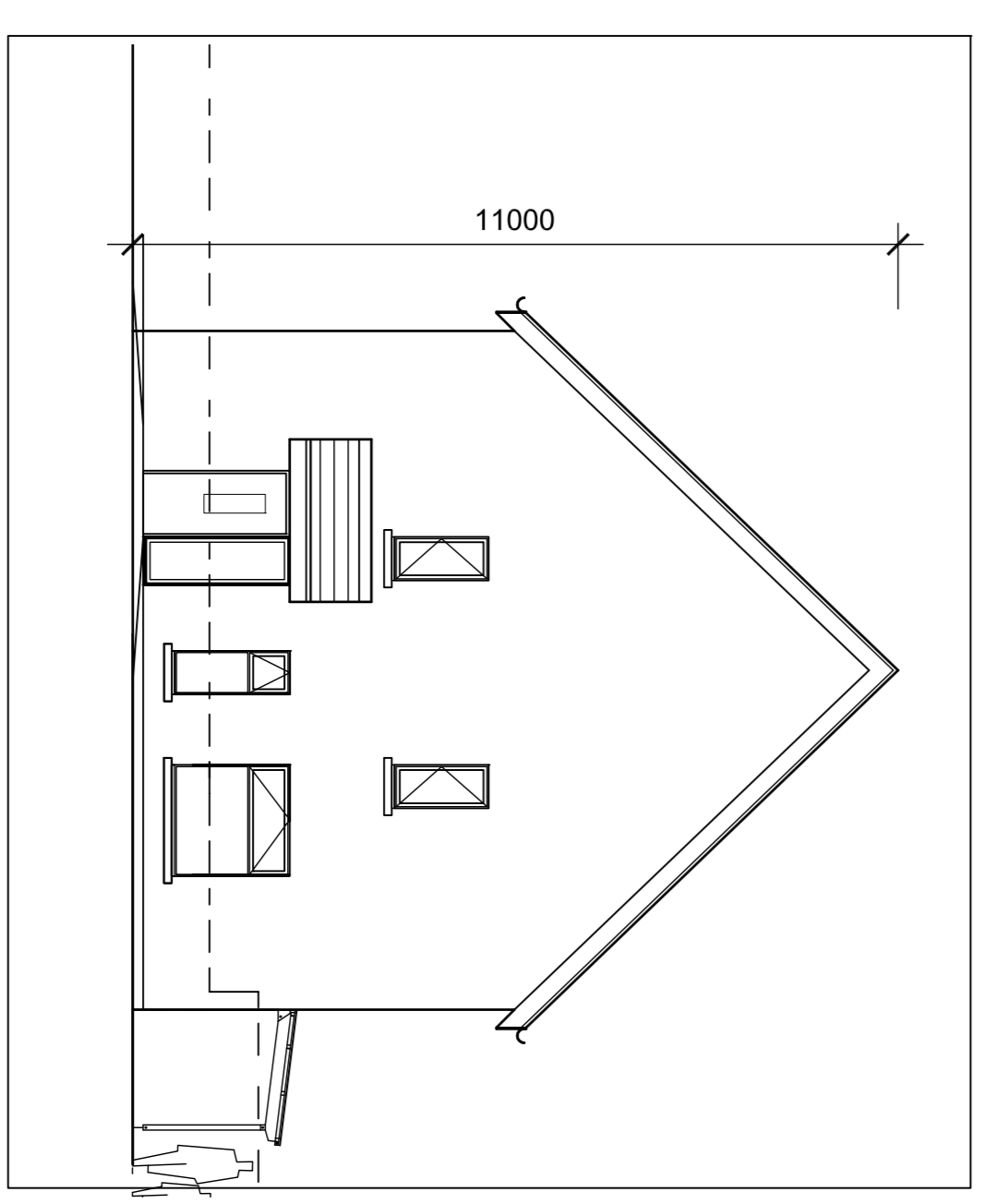
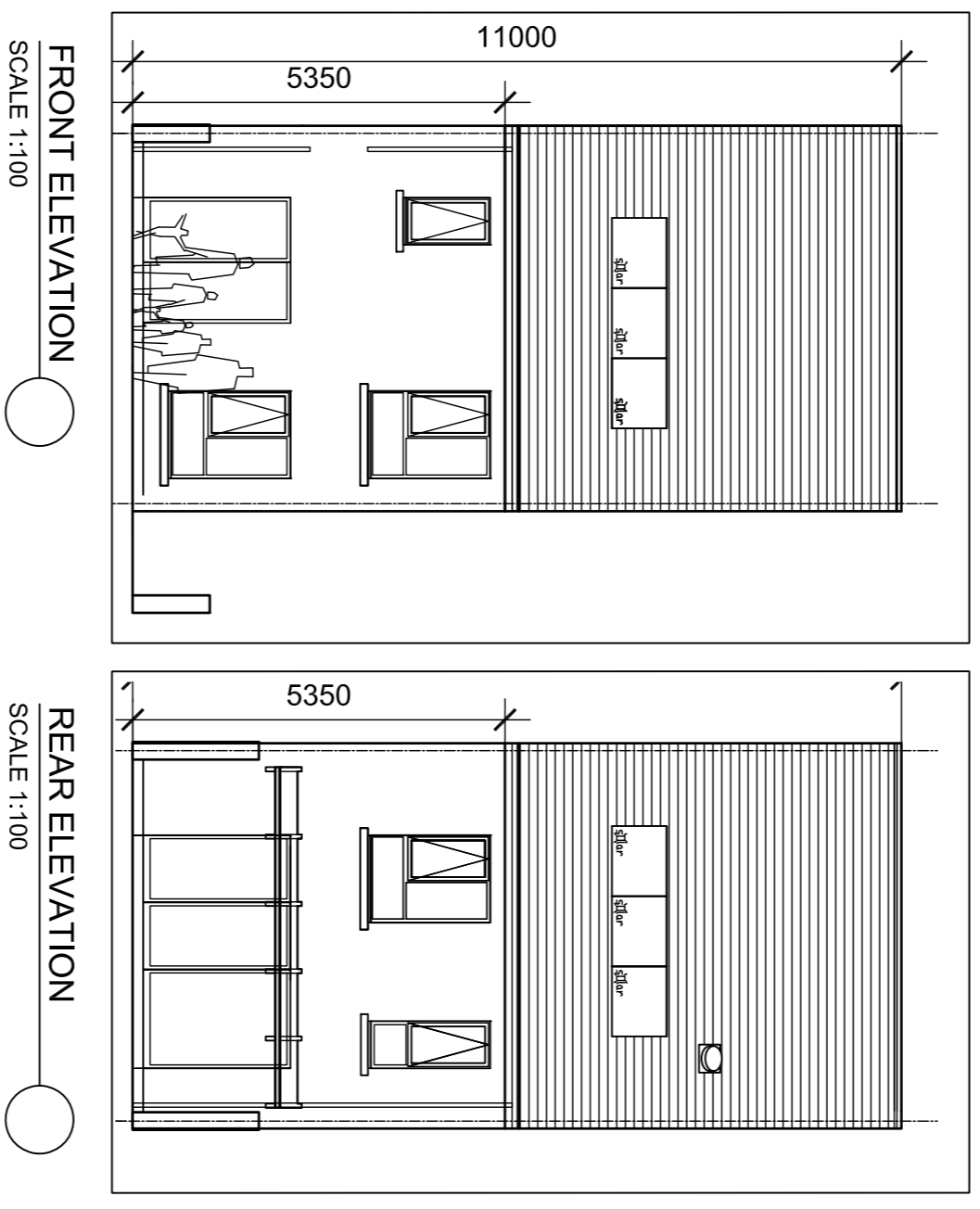
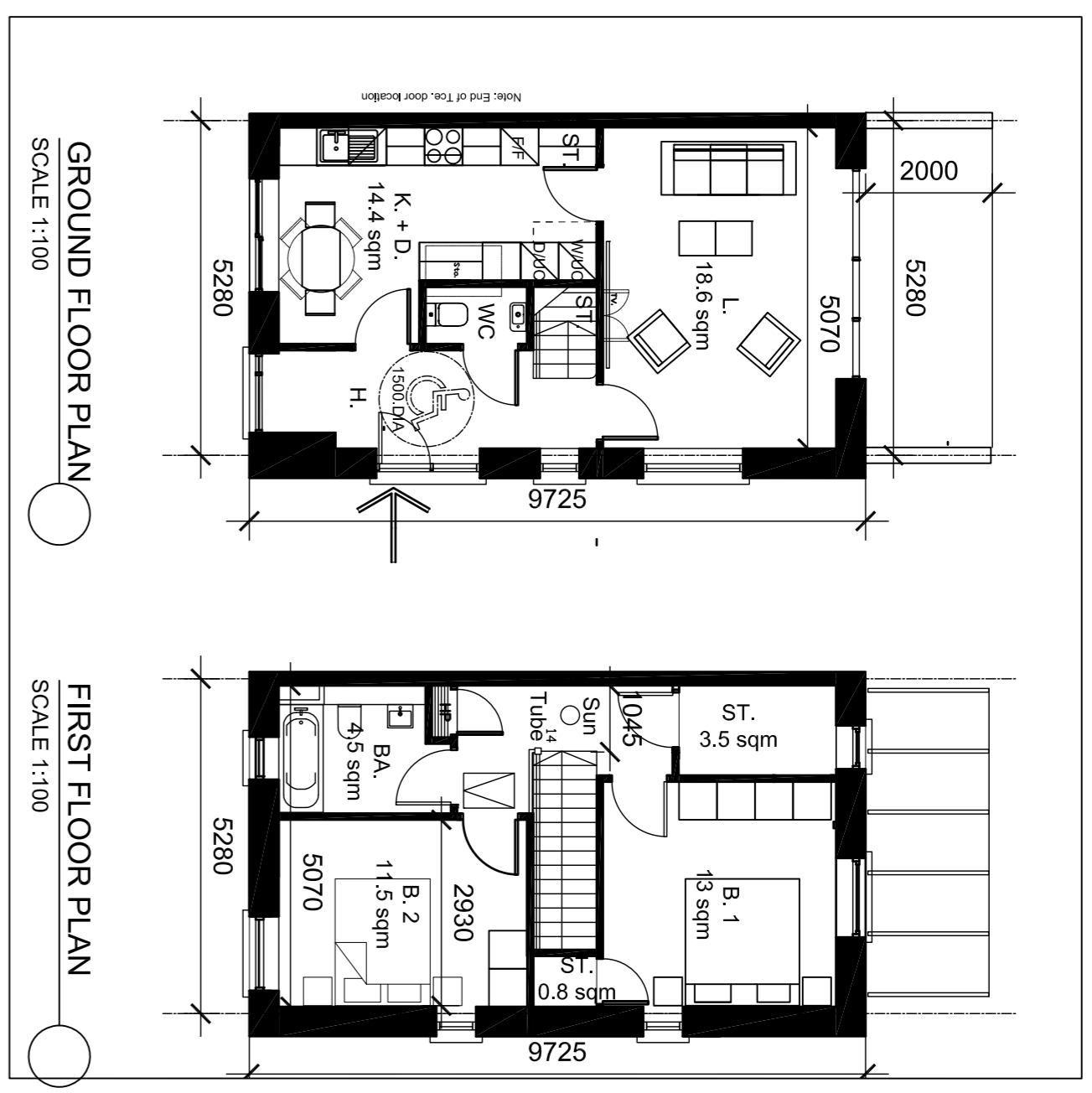


HOUSING CONSTRUCTION
COUNTY BUILDINGS
WICKLOW
E-MAIL: part8@wiclkwccoco.ie www.wicklwoe.ie

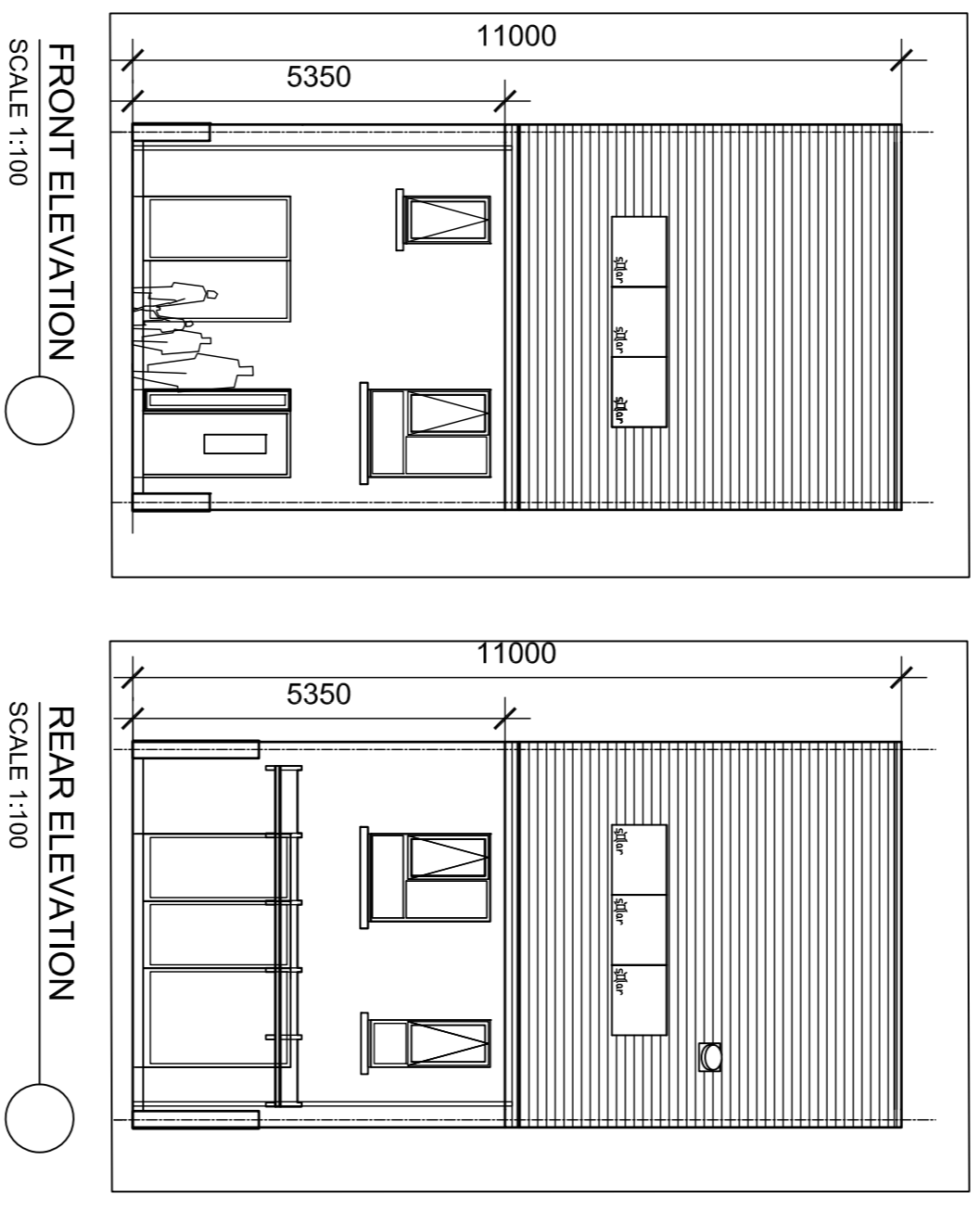
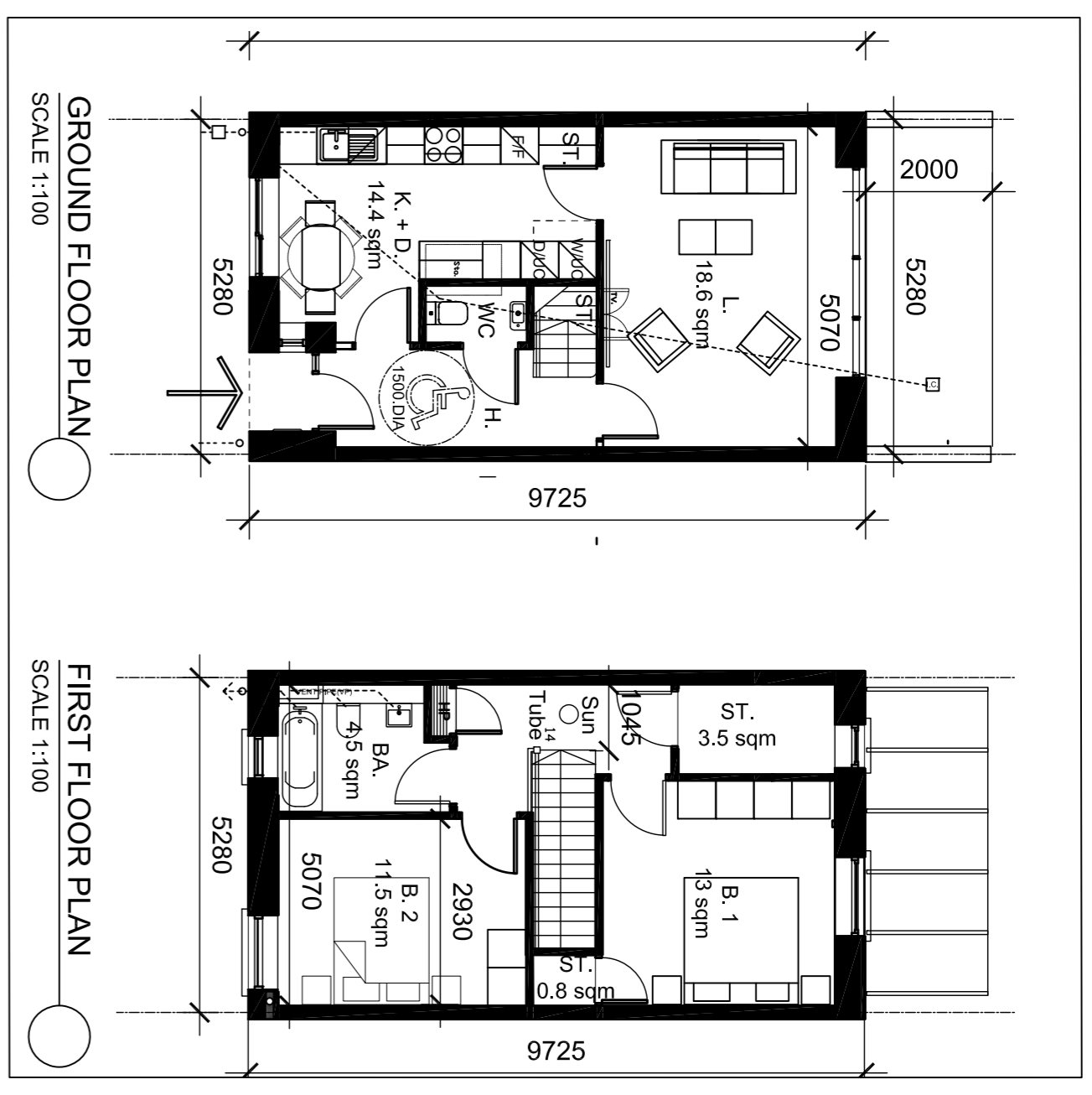
#4237 Newtown Mount Kennedy HOUSING

TITLE: **HOUSE PLANS 1**

SCALE:	AS NOTED	DATE:	SEPT '18
DWG NO:	91114225P8-3	DATE:	99●●99
SHEET SIZE:	A1	Checked:	M.D.
STATUS:	PART 8	REV:	2



HOUSE TYPE-BA SIDE ENTRY
2 bed 2 storey (4 person) house
Total area 85 sqm

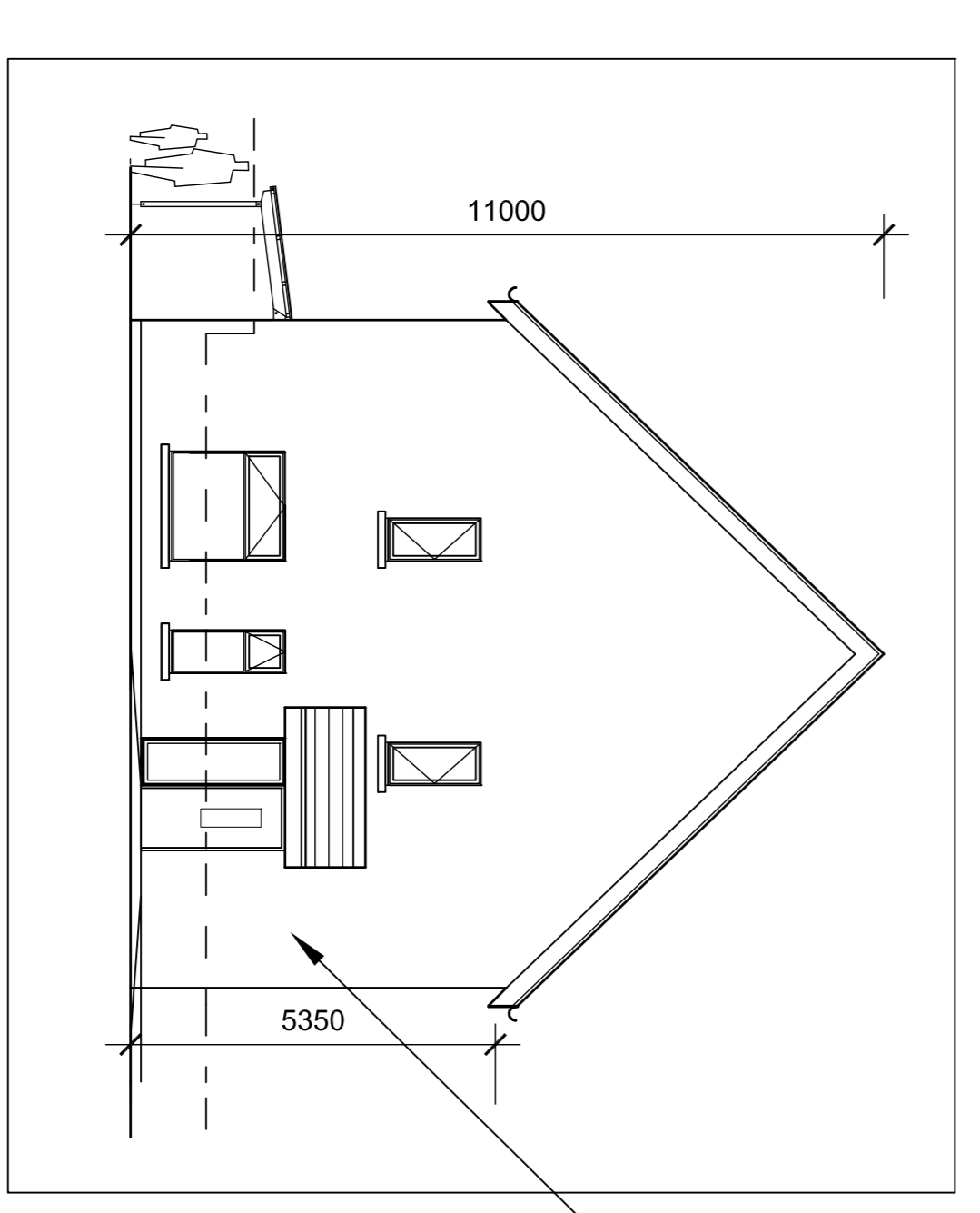
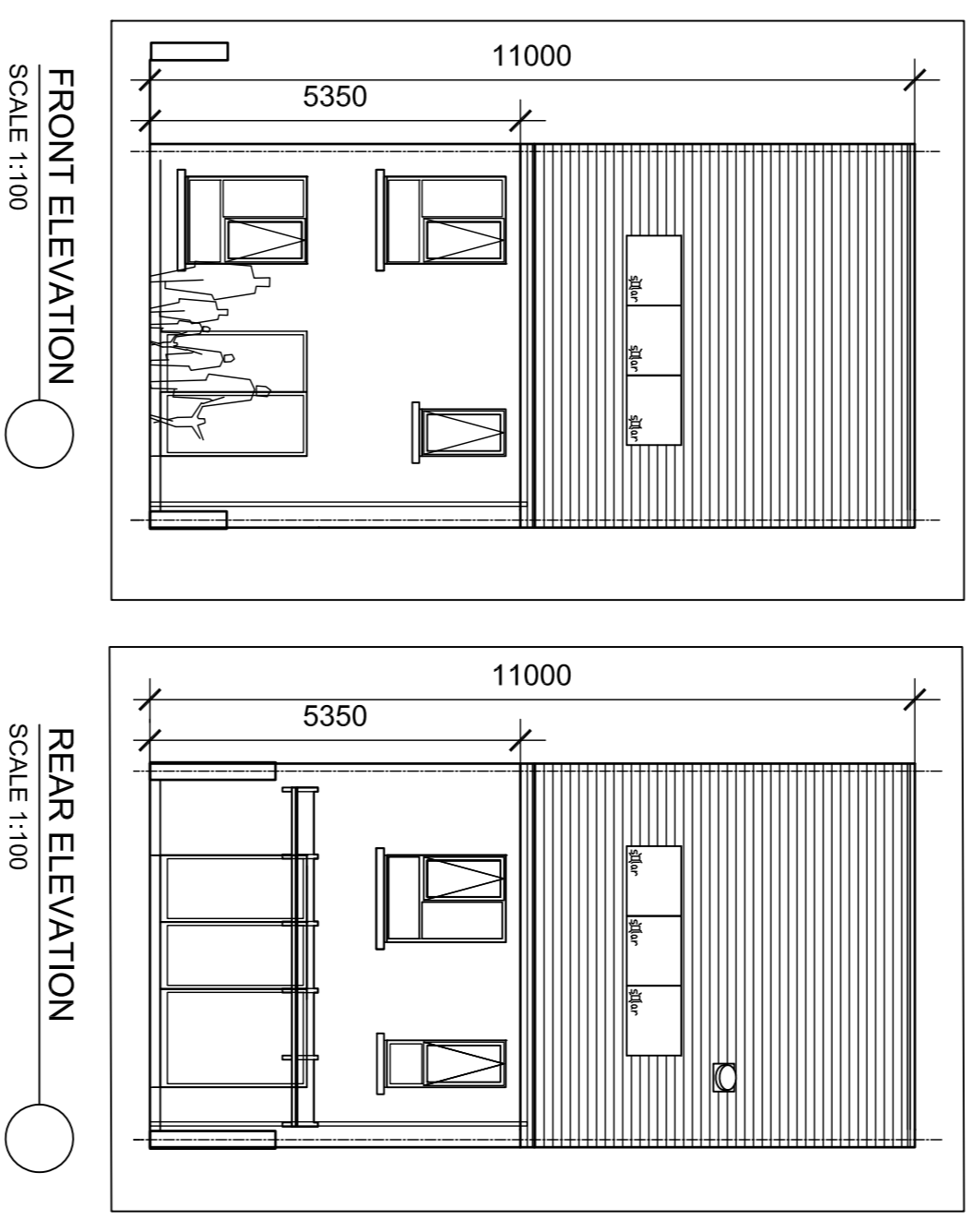
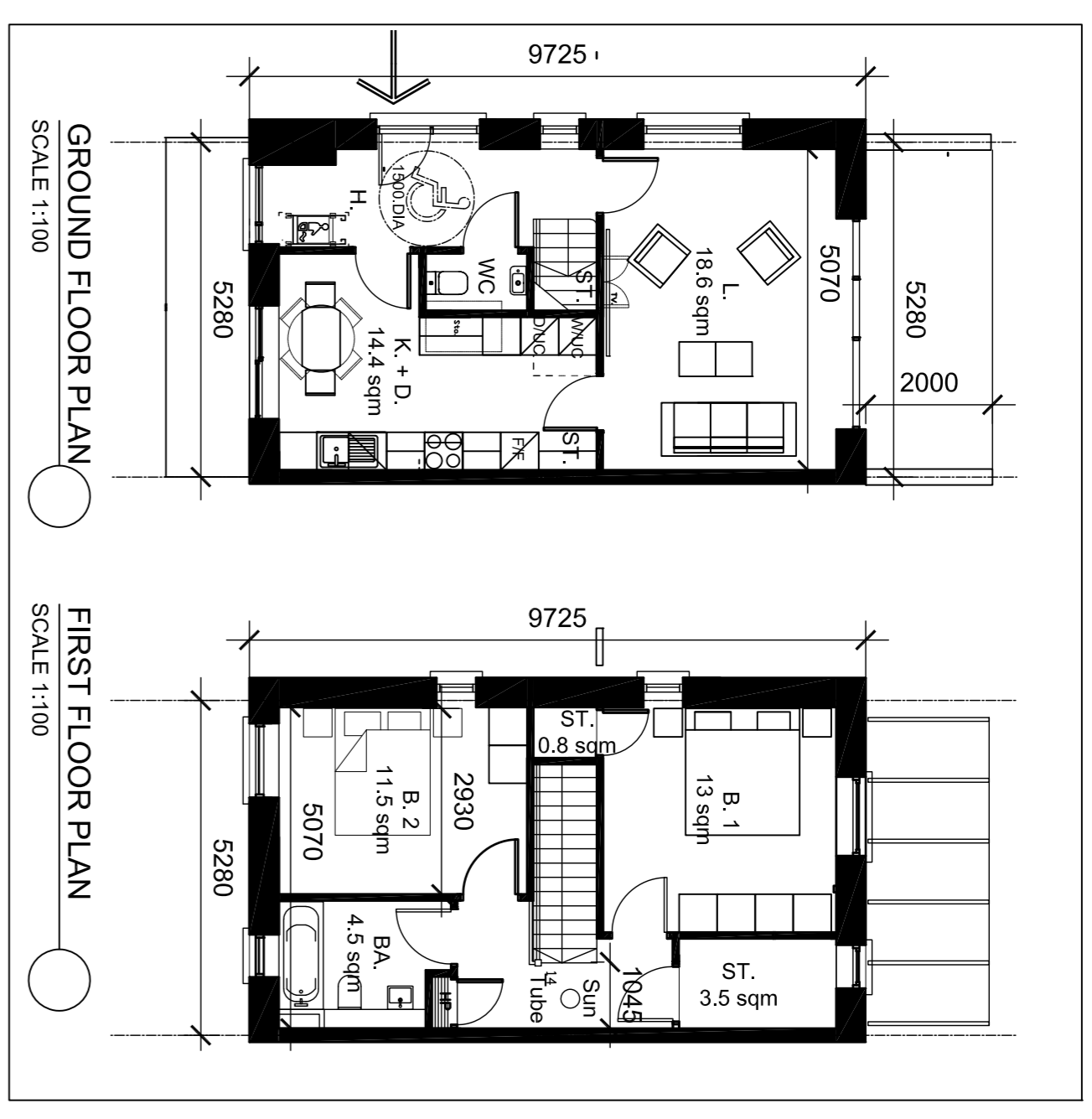


- N. B. Re Passive Security Measures (& with ref. to BS8220-1) shall include :**
- Windows and doors are to be provided to gable ends.
 - High fences to be provided to rear and sides of houses.
 - Houses have access to secure yard with provision for servicing, delivery to include a bin store.
 - A minimum of 3m distance is to be provided from front of houses to path.

KEY TO EXTERNAL FINISHES ELEVATION

- 1) ROOF-BLACK SLATE
- 2) GILLS-CONCRETE
- 6) BLACK RAIN WATER GOODS
- 7) BLACK FASCIA AND SOFFIT

MID TERRACE HOUSE TYPE-B
2 bed 2 storey (4 person) house
Total area 85 sqm



HOUSE TYPE-BA1 MIRRORRED SIDE ENTRY BA
2 bed 2 storey (4 person) house
Total area 85 sqm