

Appendix 1

Record of Protected Structures (incl - Deletions)



Existing Protected Structures in Arklow.

Town Plan Ref Number <i>NIAH number (if applicable)</i>	Structure & Address	Description
A01 16322001	St.Saviours Church Coolgreaney Road, Arklow.	Detached multiple-bay single-storey Early English Gothic Style church, built 1899 to designs by Sir Arthur Bloomfield. The church is constructed in coursed rock-faced granite with smooth granite dressings
A02 16322008	Lamberton Water Tower , Coolgreaney Road	Detached three-stage water tower, built c.1930. The tower is constructed in reinforced concrete and comprises of a circular shaft which supports an inverted cone, which in turn supports a drum shape.
A03 16322009	Lamberton Gate Lodge , Coolgreaney Road, Arklow.	Detached two-bay one and a half-storey picturesque former gate lodge, built in 1898, and now in use as a house. The building is constructed in squared rock-faced granite with smooth granite dressings.
A04 16322011	Cemetery Gate Lodge , Emoclew Road, Arklow.	Detached three-bay single-storey Classical style gate lodge, built c.1870. The building is constructed in dressed coursed granite.
A05 16322012	Bank Of Ireland , Main Street, , Arklow.	End-of-terrace three-bay three-storey bank, built c.1880. The façade is finished in rusticated granite at ground floor level, with brick to the upper storeys, granite sill courses and granite coping to the parapet.
A06 16322014	St.Marys and Peters Church , Parade Ground, Saint Mary's Road, Arklow.	Detached seven-bay double-height Renaissance Style church, built 1861 to designs by Patrick Byrne. The building is finished in ashlar granite to the front north façade and squared rubble granite elsewhere; transepts to south end of the east and west sides.
A07 16322015	Fr.Michael Murphy statue , Parade Ground, Arklow.	Statue by G. Smyth of Dublin, erected in 1898 to commemorate the centenary of the death of United Irishman Fr Michael Murphy in the 1798 Rebellion
A08 16322020	1 Saint Mary's Terrace , Saint Mary's Road.	End-of-terrace three-bay two-storey house built c.1870. The house is finished in unpainted lined render with moulded quoins. The panelled timber door is framed with pilasters with console brackets, a plain fanlight and is set within a semi-circular headed opening with heavy moulded surround with keystone motif
A09 16322021	2 Saint Mary's Terrace , Saint Mary's Road.	Terraced three-bay two-storey house built c.1870. The house is finished in unpainted lined render with moulded quoins. The panelled timber door is framed with pilasters with console brackets, a plain fanlight and is set within a semi-circular headed opening with heavy moulded surround with keystone motif
A10 16322022	3 Saint Mary's Terrace , Saint Mary's Road.	Terraced three-bay two-storey house built c.1870. The house is finished in unpainted lined render with moulded quoins. The panelled timber door is framed with pilasters with console brackets, a plain fanlight and is set within a semi-circular headed opening with heavy moulded surround with keystone motif.
A11 16322023	4 Saint Mary's Terrace , Saint Mary's Road.	Terraced three-bay two-storey house built c.1870. The house is finished in unpainted lined render with moulded quoins. The panelled timber door is framed with pilasters with console brackets, a plain fanlight and is set within a semi-circular headed opening with heavy moulded surround with keystone motif
A12 16322024	5 Saint Mary's Terrace , Saint Mary's Road.	Terraced three-bay two-storey house built c.1870. The house is finished in unpainted lined render with moulded quoins. The panelled timber door is framed with pilasters with console brackets, a plain fanlight and is set within a semi-circular headed opening with heavy moulded surround with keystone motif.
A13 16322025	6 Saint Mary's Terrace , Saint Mary's Road.	Terraced three-bay two-storey former house, built c.1870, and now in use as a solicitors office. The house is finished in unpainted lined render with moulded quoins. The panelled timber door is framed with pilasters with console brackets, a plain fanlight and is set within a semi-circular headed opening with heavy moulded surround with keystone motif.
A14 16322026	7 Saint Mary's Terrace , Saint Mary's Road.	Terraced three-bay two-storey house built c.1870. The house is finished in unpainted lined render with moulded quoins. The panelled timber door is framed with pilasters with console brackets, a plain fanlight and is set within a semi-circular headed opening with a heavy moulded surround with keystone motif.
A15	8 Saint Mary's	End-of-terrace three-bay two-storey house built c.1870. The house is finished in unpainted lined render with moulded quoins. The panelled timber door is framed with

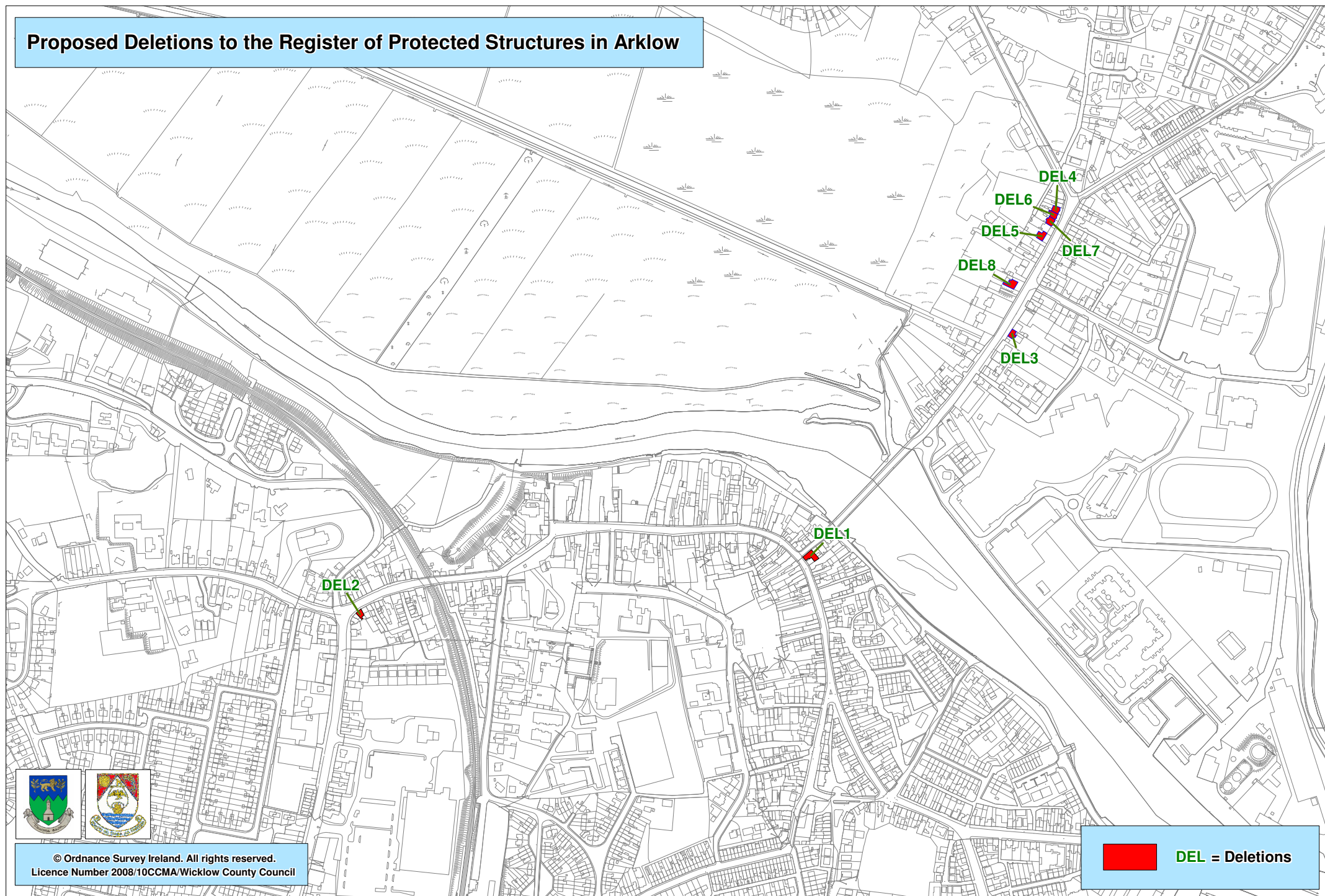
16322027	Terrace, Saint Mary's Road.	pilasters with console brackets, a plain fanlight and is set within a semi-circular headed opening with heavy moulded surround with keystone motif.
A16 16322029	Arklow Railway Station, Arklow.	Detached four-bay two-storey Railway Station, built 1863. The building is finished in roughcast render with surrounds to the openings; to the north and south are small lean-to and flat-roofed recent additions. The timber sheeted door opening on to the platform is set below a gabled bracketed roof. Window openings are flat-headed and mainly with two over two timber sash frames.
A17 16322030	Navigation Beacon, North Quay, Arklow.	Free standing tall navigation beacon set on the north quay of the Arklow harbour within the tidal estuary of the Avoca River, built in the first half of the 20th century.
A18 16322031	10 Townville St.Marys Road, Arklow	Semi-detached three-bay two-storey Domestic Revival style pair of houses, built c.1900. The houses are rendered with rusticated finish to the ground floor, dry dash finish to the first floor and with moulded quoins. Each is double-gabled
A19 16322031	11 Townville St.Marys Road, Arklow	Semi-detached three-bay two-storey Domestic Revival style pair of houses, built c.1900. The houses are rendered with rusticated finish to the ground floor, dry dash finish to the first floor and with moulded quoins. Each is double-gabled. The northern house has a panelled door with plain fanlight and both are set within a flat-headed opening; and framed with a open gabled porch supported on timber brackets. To
A20 16322032	Arklow School (Former), Saint Mary's Road	Detached four-bay two-storey former school, built 1878, and now in use as a house. The building is finished in roughcast render with a projecting two-storey gabled bay to the south side. The front door is now covered with a glazed porch addition which abuts a flat-roofed addition
A21 16322033	Saint Marys and Saint Peters Convent (Apartments) St.Marys Road, Arklow.	Detached nine-bay two-storey former convent built c.1880, and now converted to apartments. The building is constructed in squared semi-coursed basalt rubble with straw coloured brick dressings. To either side is a projecting hipped roof square bay in symmetrical arrangement. To the south is a chapel addition dating from the 1930s while to the rear north is a very long return
A22 16322034	48 Main Street, Arklow	Terraced five-bay two-storey former house, built c.1840, now in use as two shops. The façade is finished in painted render, whilst the pitched roof is slated and has a large rendered chimneystack to the east. To the ground floor are two non-identical timber shopfronts of c.1880
A23 16322035	22 Main Street, Arklow.	Terraced five-bay three-storey house, built c.1760, with shopfront insertion of c.1900. The façade is in brick with a granite base course, granite 'quoins' to the shopfront, and painted stone surrounds to the other ground floor openings, whilst the exposed section of the gabled east elevation is rendered. The pitched roof is slated and has brick chimneystacks
A24 16322037	85 Lower Main Street, Arklow.	Terraced single-bay two-storey former house, built c.1840, now in use as a shop
A25 16322045	2 Bridge Street, Arklow	Terraced two-bay two-storey shop with living quarters, built c.1880. The façade is finished in painted render whilst the pitched roof is covered in artificial slate and has rendered chimneystacks
A26 16322046	Arklow Bridge Arklow	Nineteen-arch stone built road bridge over the Avoca river, built c.1755. The bridge has a large central pier with cutwaters to both the north and south sides of the other smaller piers.
A27 16322047	27 Main Street, Arklow.	End-of-terrace five-bay two-storey house and shop, built c.1890. The façade is finished in brick with moulded string courses and small decorative moulded clay panels. The gabled east elevation is finished in unpainted render.
A28 16322048	AIB 23 & 24 Main Street, Arklow	End-of-terrace three-bay two-storey Queen Anne Revival style bank, built 1914. The symmetrical front elevation, which has a central full-height gabled projection, is finished ashlar limestone to the ground floor level and brick to the upper level, but with Giant order pilasters, upper floor window surrounds and eaves course also in limestone.
A29 16322058	Aberconic Masonic Hall, Ferrybank, Arklow.	Detached three-bay single-storey over tall basement Masonic hall, built 1903. The building is finished in roughcast render with moulded eaves course and base course. The panelled front door with lattice pane fanlight is set within a pointed arch opening with moulded stone surround.
A30 16322059	58 Ferrybank, Arklow.	End-of-terrace three-bay two-storey house/ retail unit, built c.1860. The house is finished in lined rendered with moulded quoins. The panelled front door has a decorative fanlight over and is framed with panelled pilasters with console brackets and a moulded painted surround; all is set within an elliptical-headed opening
A31 16322074	Arklow Methodist Church Ferrybank, Arklow.	Detached five-bay single-storey gable-ended Gothic style Methodist church, built c.1860. The church is rectangular in plan, with the façade finished in uncoursed rubble stone with dressed stone to the openings. The slated, steeply pitched gable-ended roof has a small octagonal spirelet to the east-facing front and a small stone chimneystack to the rear, as well as stone parapets.

A32 16322079	Kynoch Lodge, Sea Road, Arklow.	Detached multiple-bay single-storey double-pile timber-clad house, built c.1895, originally as a temporary structure. The house is rectangular in plan with a five-sided projecting bay to the north-west corner and two widely spaced canted bays to the south elevation.
A33 16322084	The Cottage, Sea Road Arklow.	Detached two-bay single-storey house, built c.1915, with later extension to the east. The building is roughly rectangular in plan but with a canted bay to the west elevation, a recessed bay to the south-east corner, and a projection to the north-east
A34 16322086	National Training and Development Centre (Former national school) Briggs Lane, Arklow.	Detached five-bay single-storey former national school, built 1892, and now in use as a National Training and Development Centre. The building is constructed in semi-coursed rubble granite with brick dressings.
A35 16322087	National Training and Development Centre (Former Sunday school) Briggs Lane, Arklow.	Detached seven-bay single-storey former Sunday School hall, built c.1890, and now in use as a National Training and Development Centre. The building is constructed in semi-coursed rubble granite with brick dressings. To the north is a recent modern lean-to addition
A36 16322088	Kilbride Rectory , Dublin Road, Arklow.	Detached three-bay two-storey house, built c.1920. The house is finished in lined render. The panelled door has multiple-pane sidelights and sits in a slightly projecting flat-roofed recent porch addition.
A37	43 Main Street, Murphys Public House, Arklow	Semi detached, four bay, three-storey house/ public house. The façade is finished in painted render with moulded quoins. Timber shopfront with panelled doors. The first floor windows are flat-headed and have plain timber sash frames, modern replacement windows on second floor.
A38	4 Lower Main St, 'Liam De Paor' Arklow	Two storey, two bay, terrace house now in use as a fruit and vegetable shop. Street fronted with painted render façade and a timber shopfront.

Proposed deletions of buildings from the Arklow RPS.

Plan ref/NIAH reference	Address	Description
DEL 1	1 Lower Main Street.	Hibernian/Inkwell.
DEL 2	17 Upper Main Street, Arklow	Pharmacy/Nolans Wallpaper.
DEL3	51 Ferrybank, Arklow.	End-of-terrace three-bay two-storey house, built c.1850. The house is finished in unpainted lined render with moulded quoins.
DEL 4	Grianan House, 24 Ferrybank, Arklow.	Terraced two-bay two-storey house, built c.1880. The façade is finished in unpainted lined render with moulded surrounds to the openings, whilst the pitched roof is slated and has rendered chimneystacks.
DEL 5	20 Ferrybank, Arklow.	End-of-terrace three-bay two-storey house, built c.1860. The façade is finished in painted lined render with moulded quoins
DEL 6	23 Ferrybank, Arklow.	Terraced two-bay two-storey house, built c.1880. The façade is finished in painted lined render with moulded surrounds to the openings, whilst the pitched roof is slated and has serrated ridge tiles and rendered chimneystacks
DEL7	22 Ferrybank, Arklow.	Terraced three-bay two-storey house, built c.1880. The façade is finished in painted lined render with moulded surrounds to the openings, whilst the pitched roof is slated and has rendered chimneystacks.
DEL 8	The Old Manse, Ferrybank, Arklow.	Detached three-bay two-storey manse, built c.1860. The façade is finished in painted lined render with 'incised' quoins and moulded surrounds to the openings, whilst the pitched roof is covered in artificial slate and has rendered chimneystacks

Proposed Deletions to the Register of Protected Structures in Arklow



© Ordnance Survey Ireland. All rights reserved.
Licence Number 2008/10CCMA/Wicklow County Council

 DEL = Deletions