



AMENDMENT 1 OF THE ASHFORD LOCAL AREA PLAN 2001

Adopted 03 July 2006

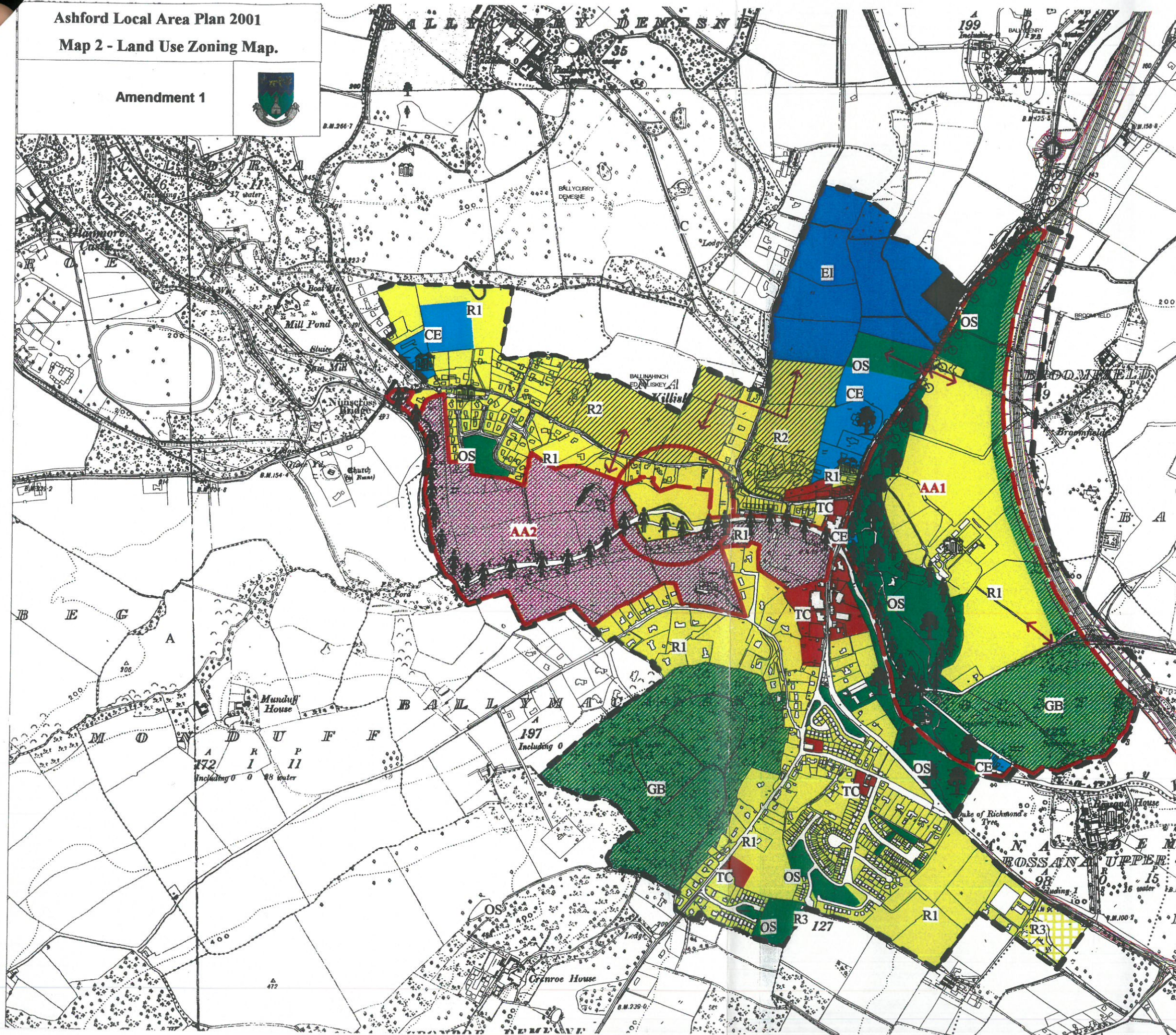
Amendment 1

Map 2 Land – use zoning map

Change the designation of approx 7 acres of land from 'AA2' to 'R1'

Ashford Local Area Plan 2001
Map 2 - Land Use Zoning Map.

Amendment 1



Zoning Legend

Residential

- R1** To protect and improve residential amenities and provide for local growth.
- R2** Phase 2 Development Lands
- R3** To provide for one house on this overall site

- TC** **Town Centre Activities**
To consolidate and facilitate the development of the central area, and to identify, reinforce, strengthen and promote urban design concepts and linkages between town centre activity areas.

- CE** **Community & Educational**
To provide for necessary community and educational lands to cater for future population increases.

- EI** **General Employment / Industry**
To promote the development of local employment opportunities and ancillary development to a high standard of architectural design with extensive landscaping, appropriate building finishes and colours.

- OS** **Open Space / Amenity**
To preserve, provide and improve public and /or private recreational amenity space.

- GB** **Greenbelt**
To preserve, provide and improve recreational amenity and open space, enable agricultural activity, support the preservation of amenities and enable the preservation of upland areas and greenbelt areas.

- C** **Commercial**
To provide space for commercial developments and local retail facilities that will not harm or detract from the commercial potential and primacy of the town centre zoned areas.

- A** **Agricultural**

- AA2** A separate Local Area Plan will be prepared for this area.

Specific Objectives Key

- AA** Action Area Plan Boundary
- Development Plan Boundary**
- Trees of Amenity Value**
- Improved Pedestrian Access**
- Reserve for Access**
- Cycleway Proposal**
- Listed Building**
- Possible Town Centre Facility**
An alternative site for playing facility of comparable standard be development as a replacement prior to any change in use.

This map has been produced by Wicklow County Council with available Local Authority and Ordnance Survey base data.

Note - UNAUTHORISED REPRODUCTION OF THIS MAP INFRINGES STATE COPYRIGHT.