



**WICKLOW
COUNTY
COUNCIL**



Wicklow County Council Planning Department
County Buildings, Station Road, Wicklow
Tel: (0404) 20100 Email: plandev@wicklowcoco.ie

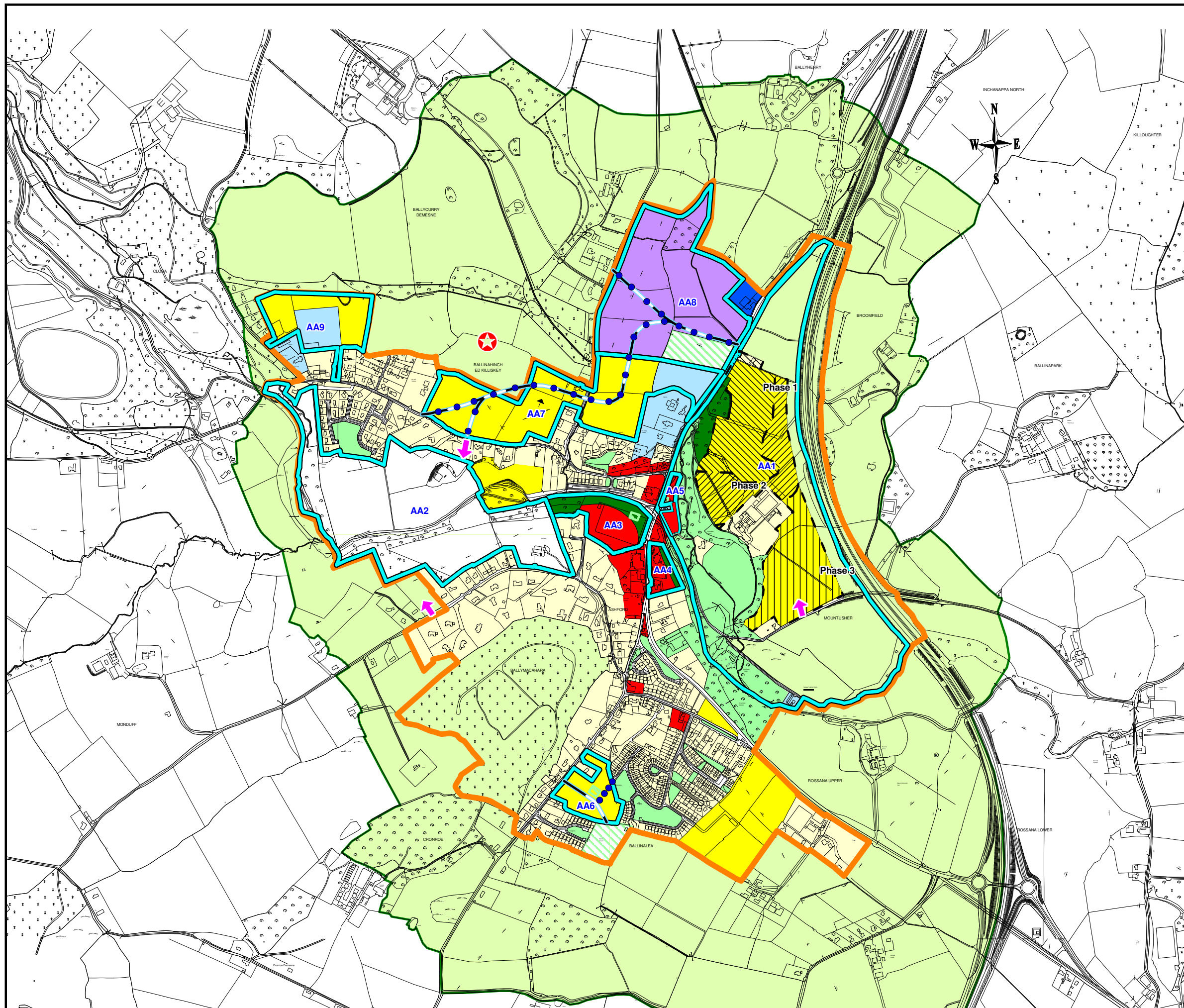
**PROPOSED ASHFORD
LOCAL AREA PLAN**

Land Use zoning Objectives with Amednments

MAP 1

Legend

- LAP Boundary
- RE - Existing Residential
- R - New Residential
- Residential Use 150 Units (138 Granted)
Gross Density: 19 per Hectare
Net Density: 25 per Hectare
- Residential Use 150 Units
Gross Density: 19.5 per Hectare
Net Density: 25.6 per Hectare
- Residential Use 200 Units
Gross Density: 21.6 per Hectare
Net Density: 27.62 per Hectare
- TC1 - Primary Town Centre
- E - Employment
- Commerical
- C - Community/Educational /Institutional
- OS - Open Space
- Private Open Space
- Formal Active OS
- GB - Agriculture/Greenbelt
- AA (Action Area)
- Indictative New Road
(Extact route subject to detailed assessment and design)
- Pedestrian/Cycling
- Reserve for Access
- Possible location of GAA Pitch



Director of Services: **Desmond O' Brien**
Senior Planner: **Patrick B. Hooper**

Scale: **1:10,000 @ A3** Date: **11/12/2007**

Drawn By: **POF** Checked By: **NT**

Ordnance Survey Ireland. All rights reserved.
Licence Number 2003/07CCMA/Wicklow County Council