



**WICKLOW
COUNTY
COUNCIL**











Wicklow County Council Planning Department
County Buildings, Station Road, Wicklow
Tel: (0404) 20100 Email: plandev@wicklowcoco.ie

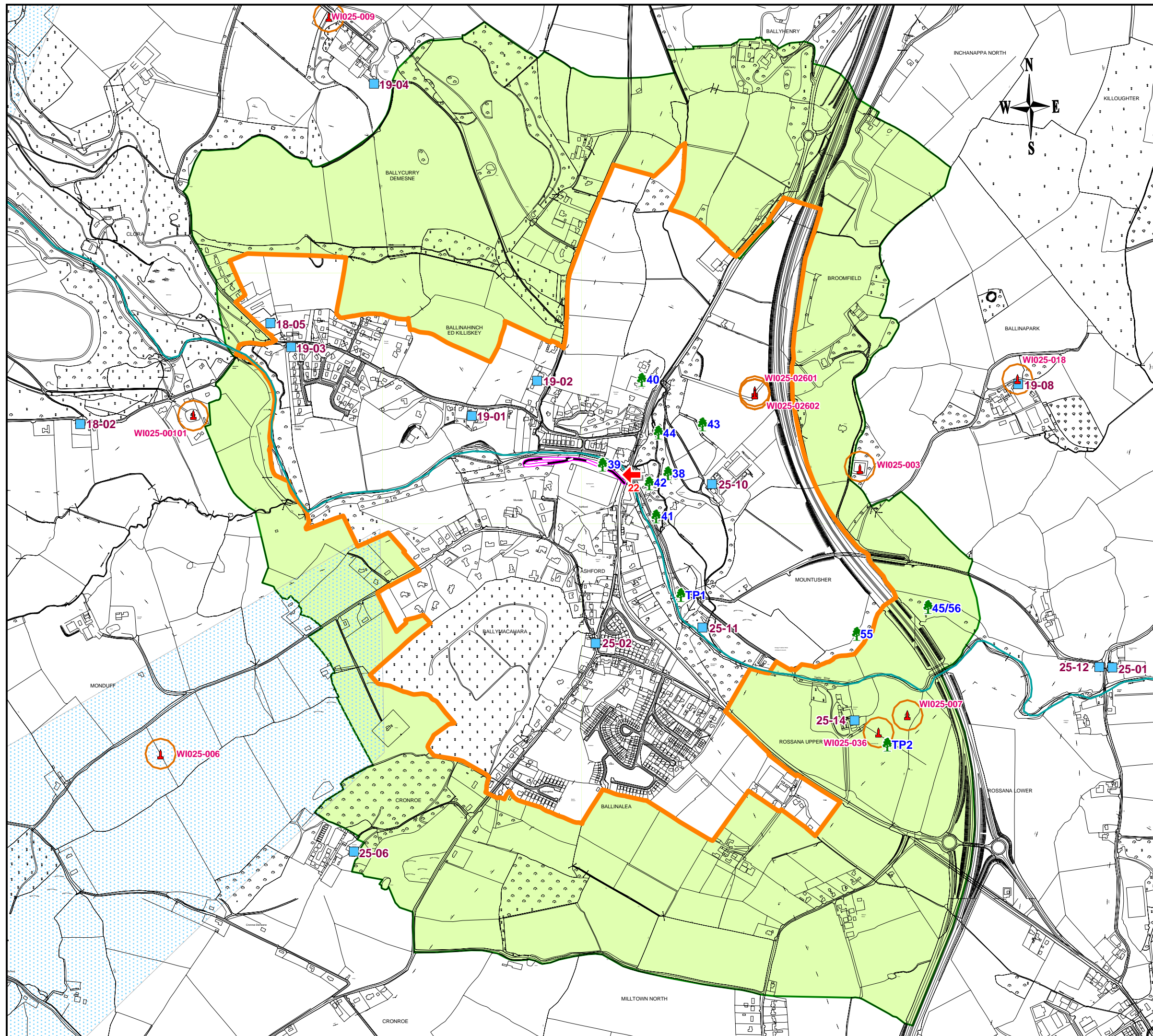
**PROPOSED ASHFORD
LOCAL AREA PLAN**

NATURAL AND BUILT HERITAGE

MAP 2

Legend

-  Town Boundary
-  Agriculture/Greenbelt
-  Area of Special Amenity
-  Recorded Monuments
 WI025-00101
 WI025-003
 WI025-007
 WI025-02601
 WI025-02602
 WI025-036
-  Protected Structures
-  Views And Prospects
-  Green Route
-  Trees Preservation



Director of Services: Desmond O' Brien
Senior Planner: Patrick B. Hooper

Scale: 1:12,000 @ A3 Date: 11/12/2007

Drawn By: POF Checked By: NT

Ordnance Survey Ireland. All rights reserved.
Licence Number 2003/07CMA/Wicklow County Council

G:\Apps\Mapdata\PLANNING\Development\Ashford\Ashford 2007\Ashford_LAP_Draft_07_Heritage.wor