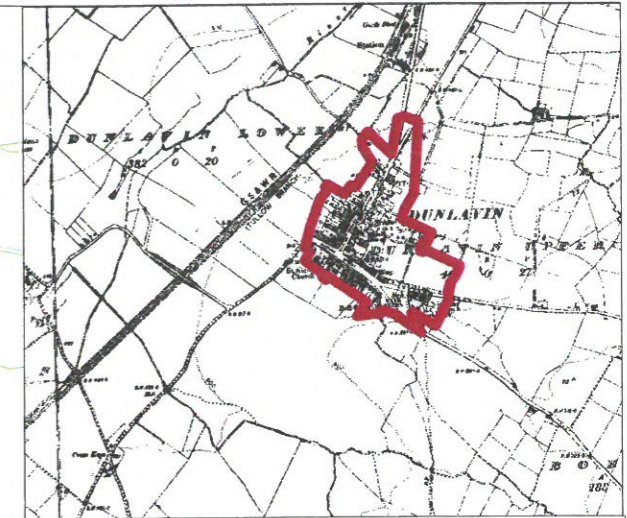


**Dunlavin Local Area Plan
Map No 2: Specific Objectives**





**Wicklow County Council
Date: 8/10/2001**



County Manager: Mr Eddie Sheehy



Specific Objectives

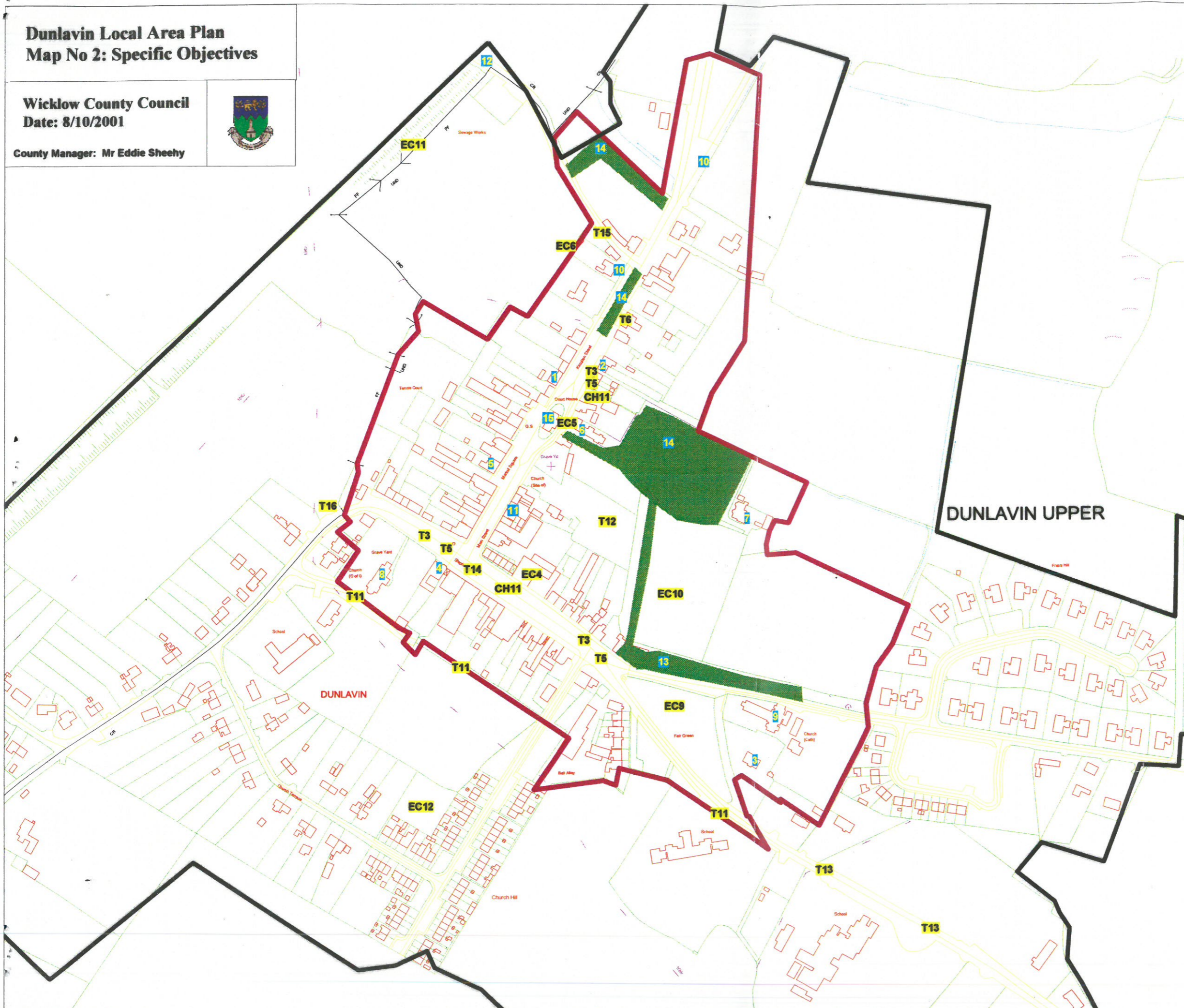
-  Architectural Boundary
-  Zoned Area.
-  Proposed Protected Structures/Items 1-14
Existing Protected Structure 15
See Appendix 1: Protected Structures
-  Trees Considered for Protection.

- T3** Reinstatement of road surfaces and edges.
- T5** Improve Footpaths and Public Lighting.
- T6** Provide a footpath.
- T11** Provide sufficient off-street car parking.
- T12** Develop a public off-street car park.
- T13** Introduce adequate traffic calming measures.
- T14** Improve road markings
- T15** Upgrade road to facilitate access to future development of land.
- T16** To facilitate access for the future development of land.
- EC4** Carry out improvement works on the Immal Hall
- EC5** Works on Market House to accommodate expansion of Library.
- EC6** Land for community, social and recreational facilities.
- EC9** Preserve and protect Fair Green and Cow Green.
- EC10** Provide Town Centre Park.
- EC11** Provide a landscape right of way.
- EC12** Landscape and upgrade existing Area.
- CH11** Tree Planting.

for more information see Appendix 2.

This map has been produced by Wicklow County Council with available Local Authority and Ordnance survey base data.

Note - UNAUTHORISED REPRODUCTION OF THIS MAP INFRINGES STATE COPYRIGHT.



DUNLAVIN UPPER

DUNLAVIN

Church Hill

School