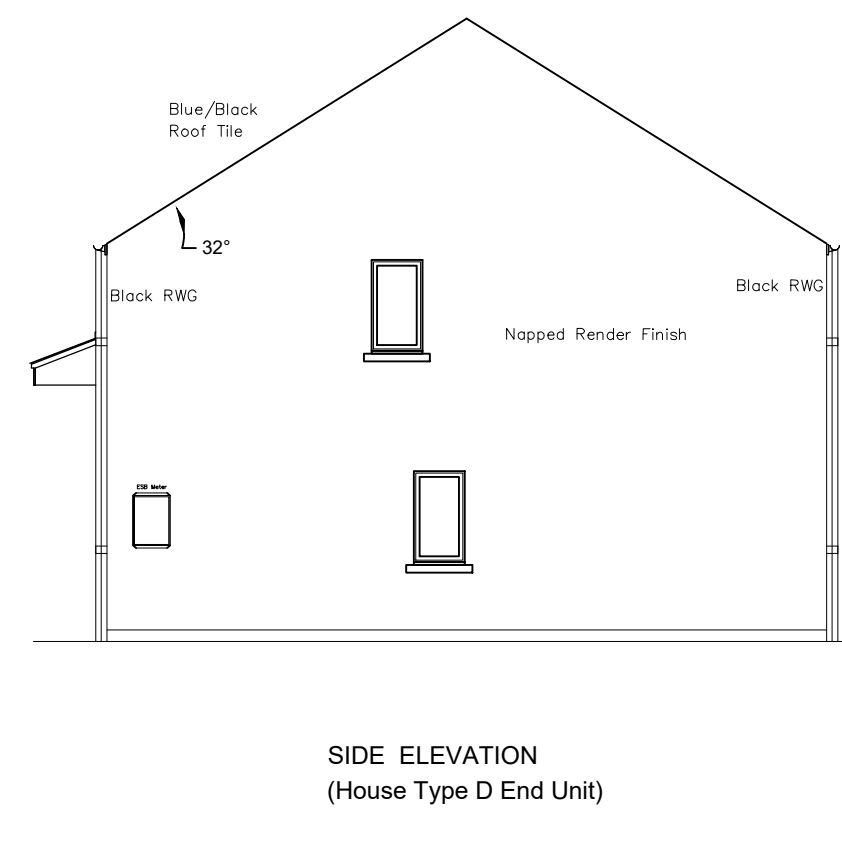
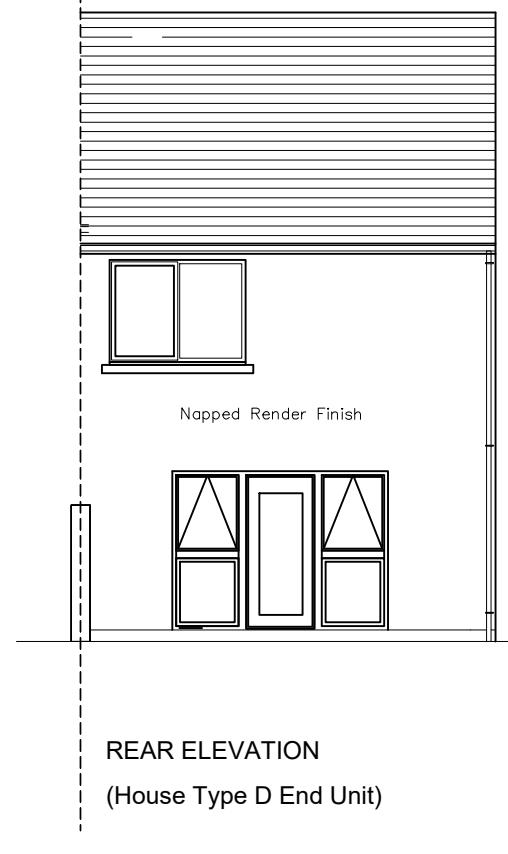
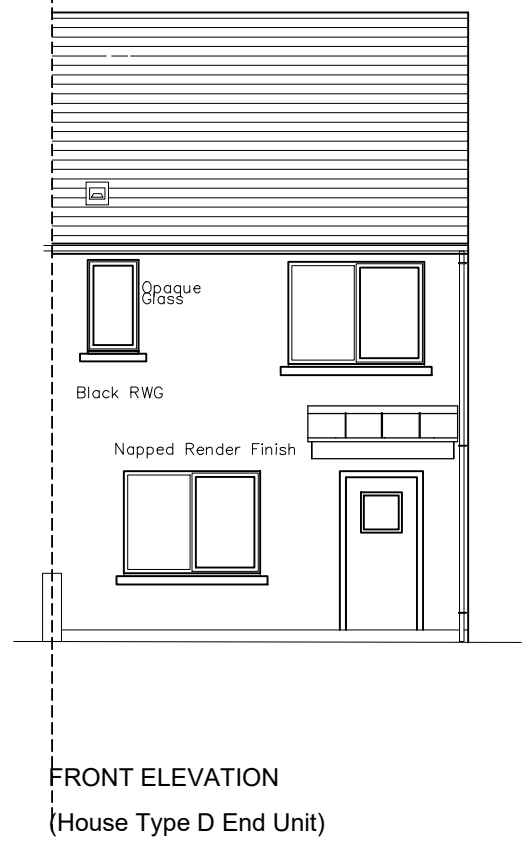



- 2 Bed 4P House Total area - 87msq (80)
- Living - 18.6msq (13)
 - Kitchen - 14.4msq
 - Bedroom 1 - 13.0msq (13)
 - Bedroom 2 - 11.5msq (11.4)
 - Storage - 4.3msq (4)



REV:	DATE:	DRN BY:	DESCRIPTION
REVISIONS:			
 WICKLOW COUNTY COUNCIL			
HOUSING CONSTRUCTION		TEL: 0404 - 20100	
COUNTY BUILDINGS		FAX 0404 - 67792	
WICKLOW			
E-MAIL: cosec@wicklowcoco.ie		www.wicklow.ie	
JOB: Proposed Housing Units At Upper Dargle Road Bray			
TITLE: Plans, Elevations & Section (Unit Type D)			
SCALE:	1:100 @A3	Date:	Aug 22
DWG NO:	UDRB/P8/103	Drawn:	EM
SHEET SIZE:	A3	Checked:	
STATUS:	PART 8		REV: