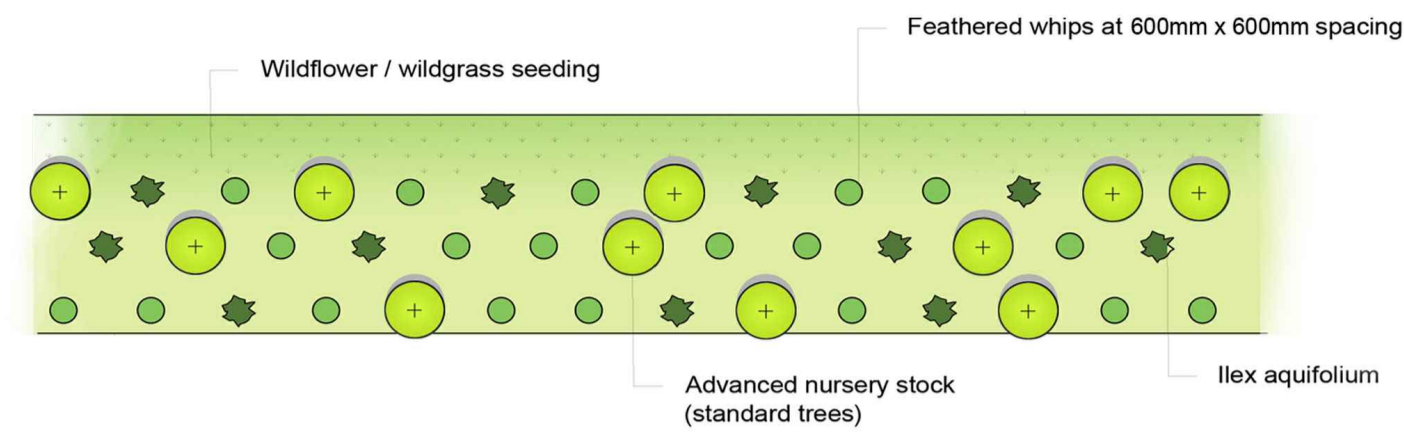


PROPOSED NATIVE HEDGEROW:



Typical section of proposed hedgerow (at implementation)

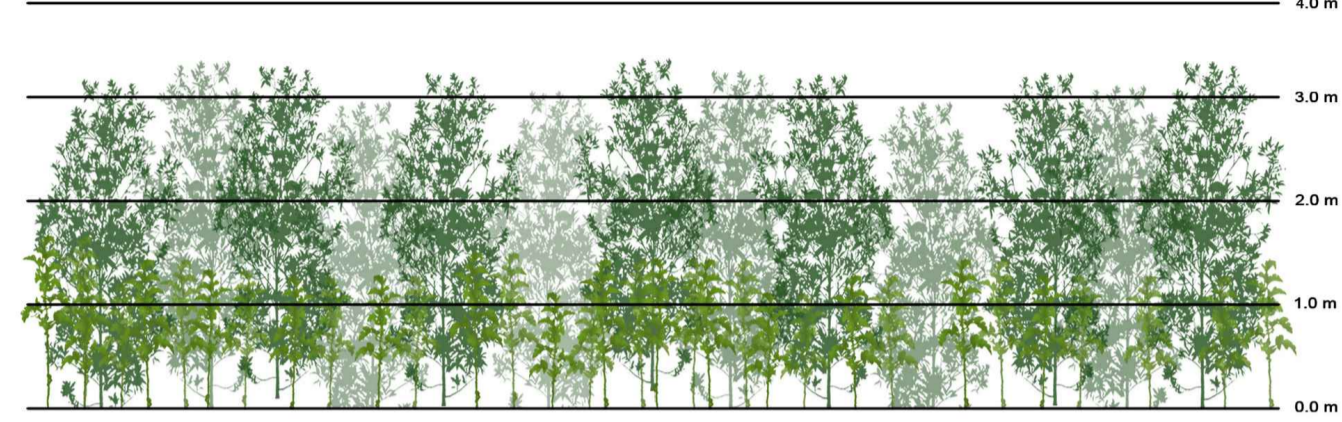
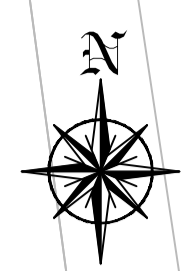
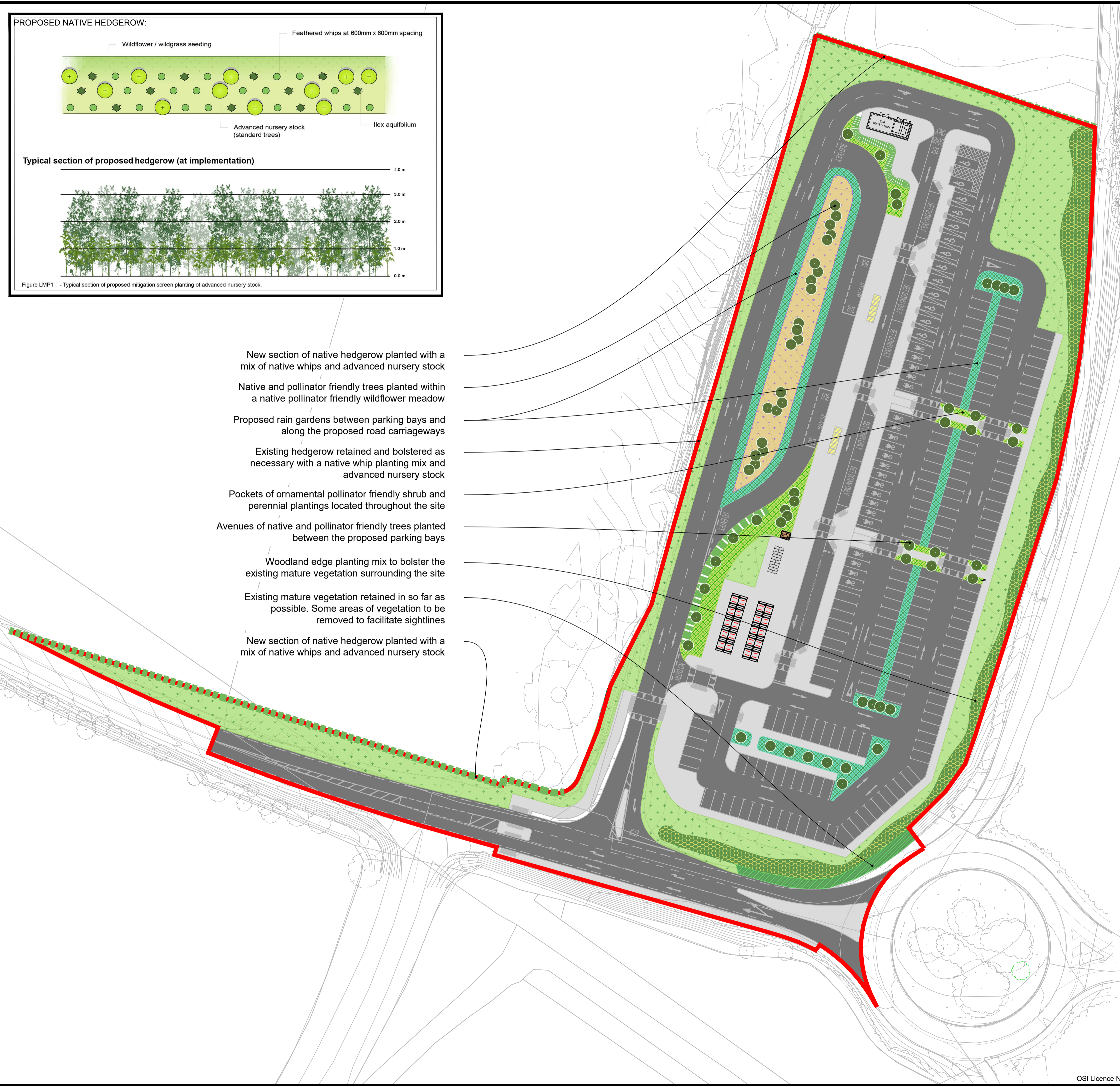


Figure LMP1 - Typical section of proposed mitigation screen planting of advanced nursery stock.

- New section of native hedgerow planted with a mix of native whips and advanced nursery stock
- Native and pollinator friendly trees planted within a native pollinator friendly wildflower meadow
- Proposed rain gardens between parking bays and along the proposed road carriageways
- Existing hedgerow retained and bolstered as necessary with a native whip planting mix and advanced nursery stock
- Pockets of ornamental pollinator friendly shrub and perennial plantings located throughout the site
- Avenues of native and pollinator friendly trees planted between the proposed parking bays
- Woodland edge planting mix to bolster the existing mature vegetation surrounding the site
- Existing mature vegetation retained in so far as possible. Some areas of vegetation to be removed to facilitate sightlines
- New section of native hedgerow planted with a mix of native whips and advanced nursery stock



LEGEND

	EXISTING BOUNDARY VEGETATION RETAINED
	WOODLAND EDGE PLANTING MIX
	PROPOSED TREES
	PROPOSED NATIVE HEDGEROW
	PROPOSED RAIN GARDENS BETWEEN PARKING BAYS AND ADJACENT TO ROAD CARRIAGEWAYS
	PROPOSED POLLINATOR FRIENDLY ORNAMENTAL SHRUB AND PERENNIAL PLANTING MIX
	SPECIES RICH GRASS MIX
	POLLINATOR FRIENDLY WILDFLOWER MEADOW
	PROPOSED GENERAL AMENITY GRASS MIX
	PLANNING APPLICATION BOUNDARY

P01	ISSUED FOR PLANNING	SM	IR	25/10/24
Rev	Description	Drawn	Checked	Date

**Clifton Scannell Emerson Associates**

Clifton Scannell Emerson Associates Limited  
 Consulting Engineers,  
 3rd Floor The Highline,  
 Bakers Point, Pottery Road,  
 Dun Laoghaire, Co. Dublin,  
 Ireland, A96 KW29

T: +353 1 288 5006  
 F: +353 1 283 3466  
 E: info@csea.ie  
 W: www.csea.ie

Client	WICKLOW COUNTY COUNCIL
Project	ASHFORD PARK AND RIDE FACILITY
Dwg. Title	PROPOSED LANDSCAPING PLAN
Drawn By	SM
Date	OCT 2024
Checked By	IR
Scale	1:500 @ A1
Project Code	20_008L - CSE - GEN - XX - DR - C - 3800
Status Code	S02 PART VIII APPROVAL
Project Status	P01 FOR PLANNING