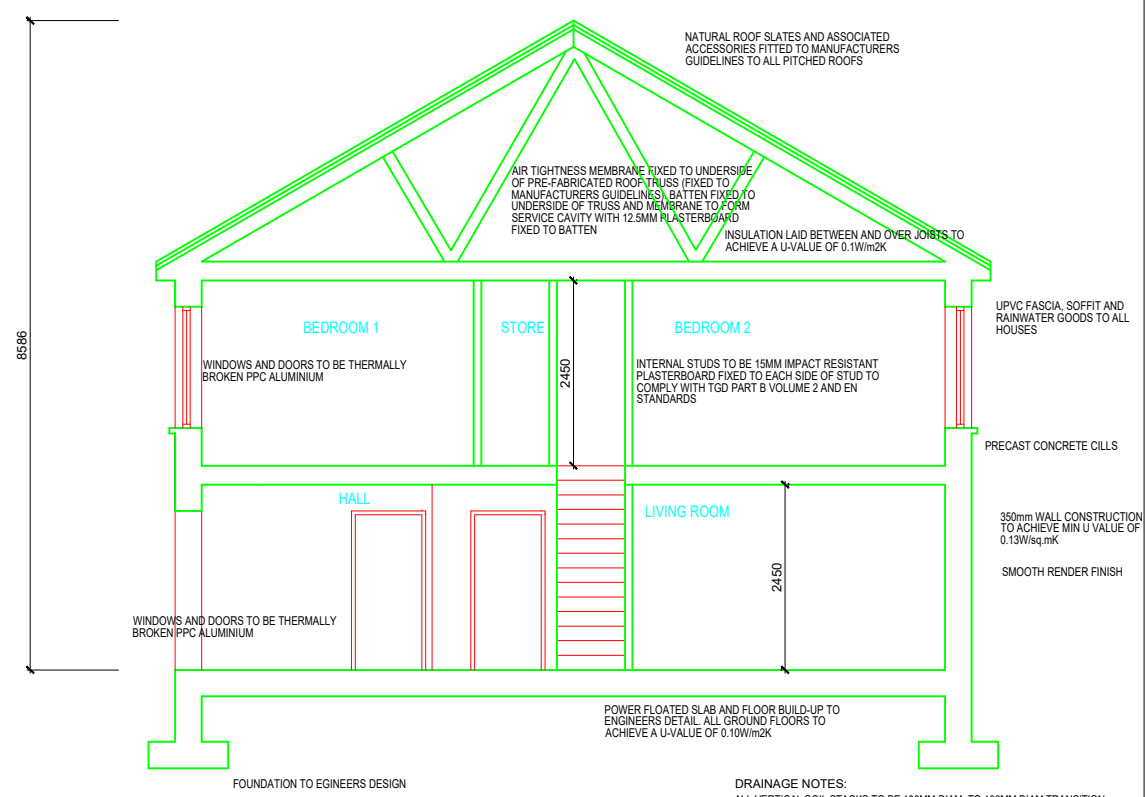
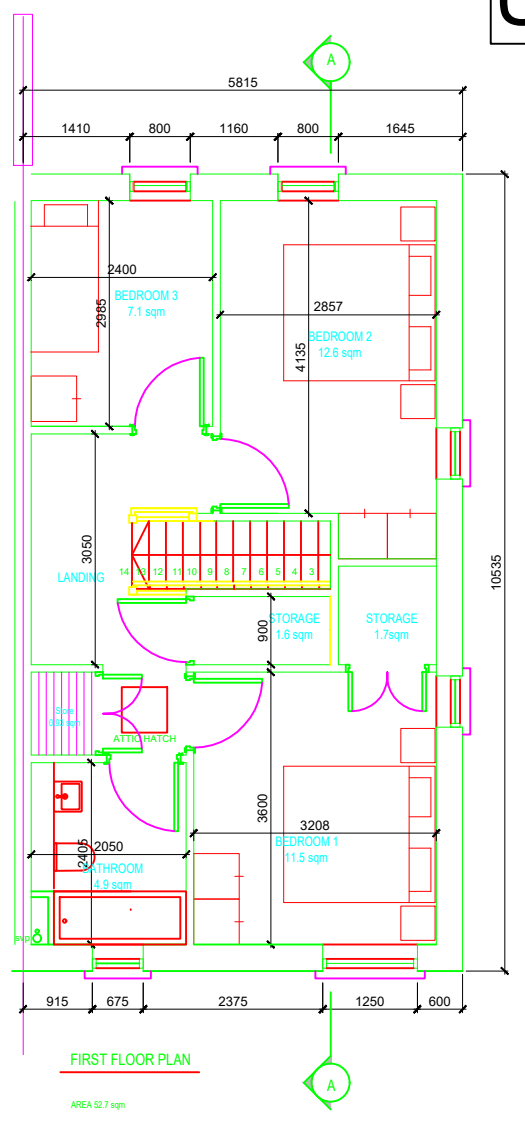
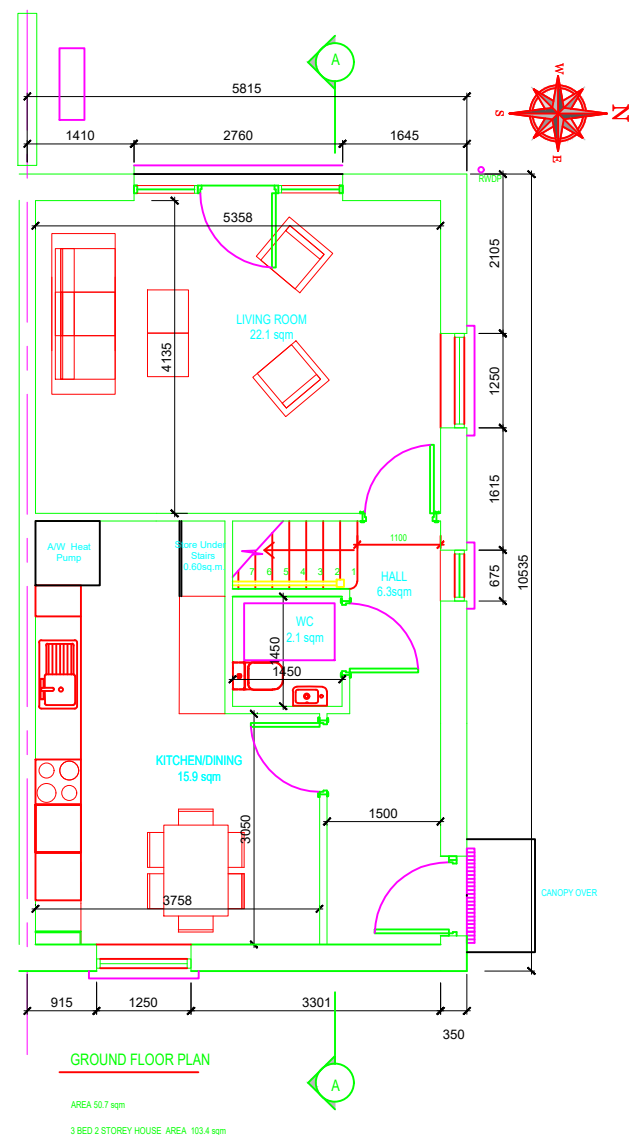


UNIT TYPE - D (3 BED)



DRAINAGE NOTES:

ALL VERTICAL SOIL STACKS TO BE 100MM DIAM. TO 100MM DIAM TRANSITION ALIGNED TO FLOW AT GROUND FLOOR LEVEL TO 450MM RADIUS 100MM DIAM SWEEP BEND TO CONCRETE AND 100MM DIAM TO FALL 1:60 TO COLLECTION. BRANCHES BELOW GROUND TO BE PATENT 45 DEGREES OR LESS TO LINE OF FLOW.

ALL GROUND FLOOR SOILS WASTE TO BE 100MM DIAM TRANSITION TO 450 RADIUS 100MM DIAM SWEEP BEND TO CONCRETE. 100MM DIAM TO FALL 1:60 TO COLLECTION. BRANCHES TO BE PATENT 45 DEGREE BENDS OR LESS TO LINE OF FLOW.

ALL WASTES TO GROUND FLOOR TO BE 100MM DIAM FROM FLOOR LEVEL SWEEP TO 100MM DIAM OUTFALL 1:40 TO BIGT. ALL BRANCHES TO BE PATENT ALIGNED TO FLOW NOT LESS THAN 90 DEGREES TO DIRECTION OF FLOW. FIT PATENT REDUCERS TO TAKE 40MM DIAM WASTES AT FLOOR FACE

ALL WASTES IN FLOOR SLAB TO BE ACCURATELY ALIGNED TO ENSURE PROPER CONNECTIONS INSIDE VOID OF PARTITIONS OR ALIGNED TO SAME AS SHOWN

ALL RWP 100MM DIAM SWEEP TO 100MM DIAM OUTFALL 1:40 TO BIGT. ALL BRACHES TO BE PATENT ALIGNED TO FLOW

ALL WC AND SOIL WASTE OUTLETS TO BE ACCURATELY ALIGNED FOR FITTING TYPES SPECIFIED

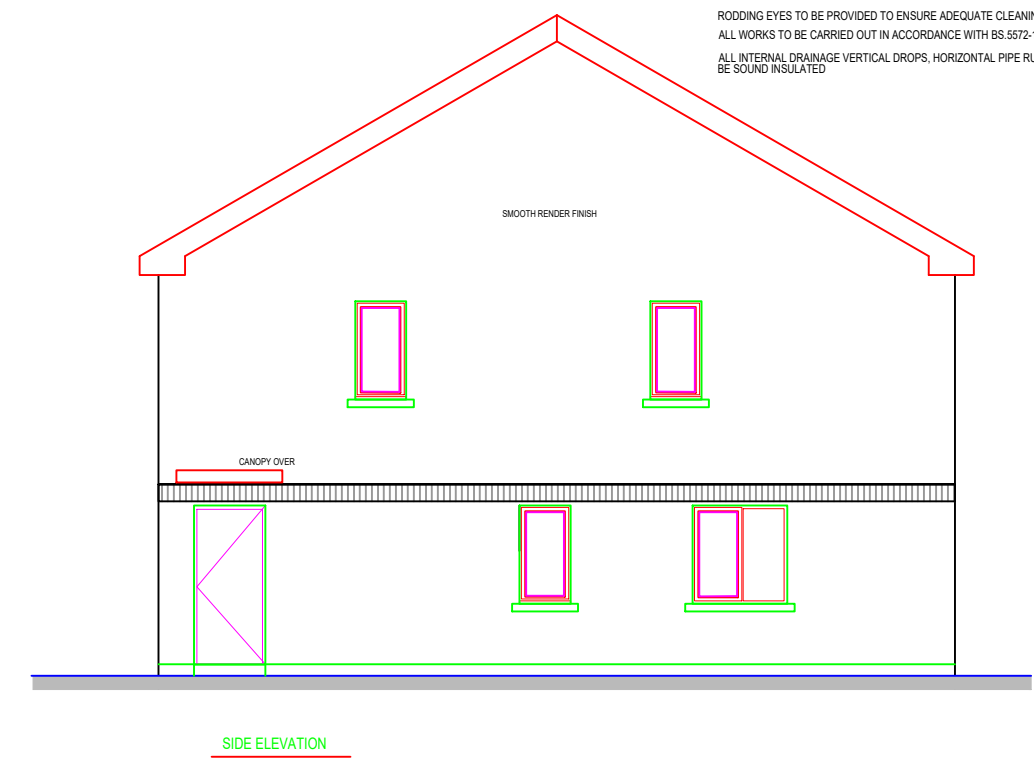
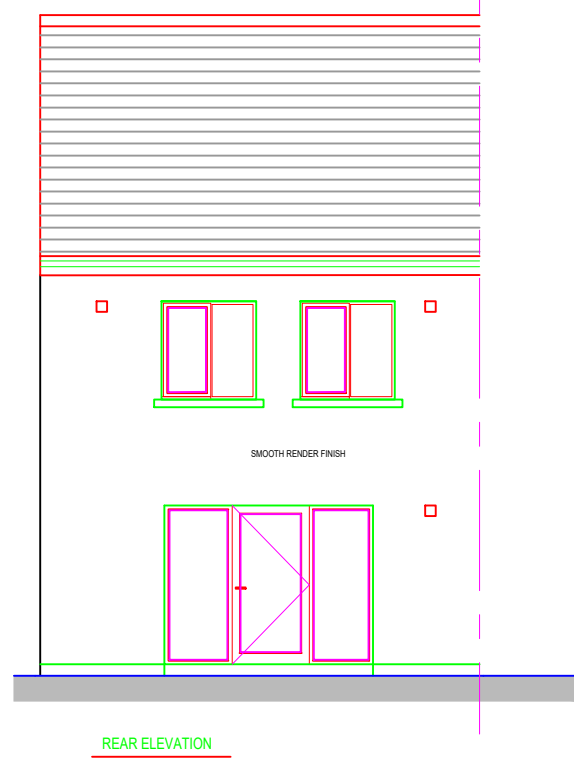
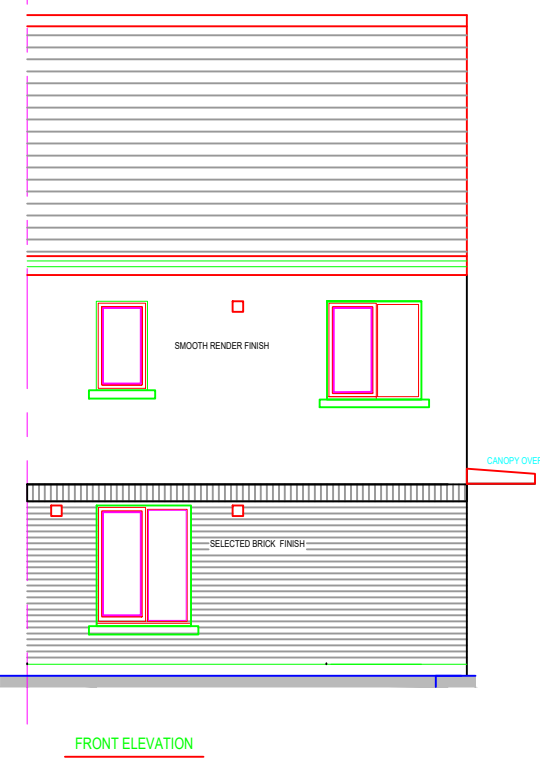
ALL FIRST FLOOR WASTES TO BE SUSPENDED WITH FIXINGS, FALLS & CONNECTIONS IN STRICT ACCORDANCE WITH PIPE MANUFACTURERS SPECIFICATION


ALL SOIL STACKS TO BE VENTED TO OPEN AIR WITH PATENT COVERS

RODDING EYES TO BE PROVIDED TO ENSURE ADEQUATE CLEANING ACCESS

ALL WORKS TO BE CARRIED OUT IN ACCORDANCE WITH BS 5572-1994

ALL INTERNAL DRAINAGE VERTICAL DROPS, HORIZONTAL PIPE RUNS ARE TO BE SOUND INSULATED



REV:	DATE:	DRN BY:	DESCRIPTION
REVISIONS:			
 WICKLOW COUNTY COUNCIL			
HOUSING CONSTRUCTION		TEL:0404 - 20100	
COUNTY BUILDINGS		FAX 0404 - 67792	
WICKLOW			
E-MAIL cosec@wicklowcoco.ie		www.wicklow.ie	
JOB: Proposed Housing At Ballynerrin Upper Wicklow Town			
TITLE: Plan, Section & Elevations Unit Type D			
SCALE: 1:100@ A3	Date: March 22		
DWG NO: BNU/P8/105	Drawn EM		
SHEET SIZE A3	Checked		
STATUS: Part 8		REV	