

# Wicklow County Council Transportation & Infrastructure Delivery

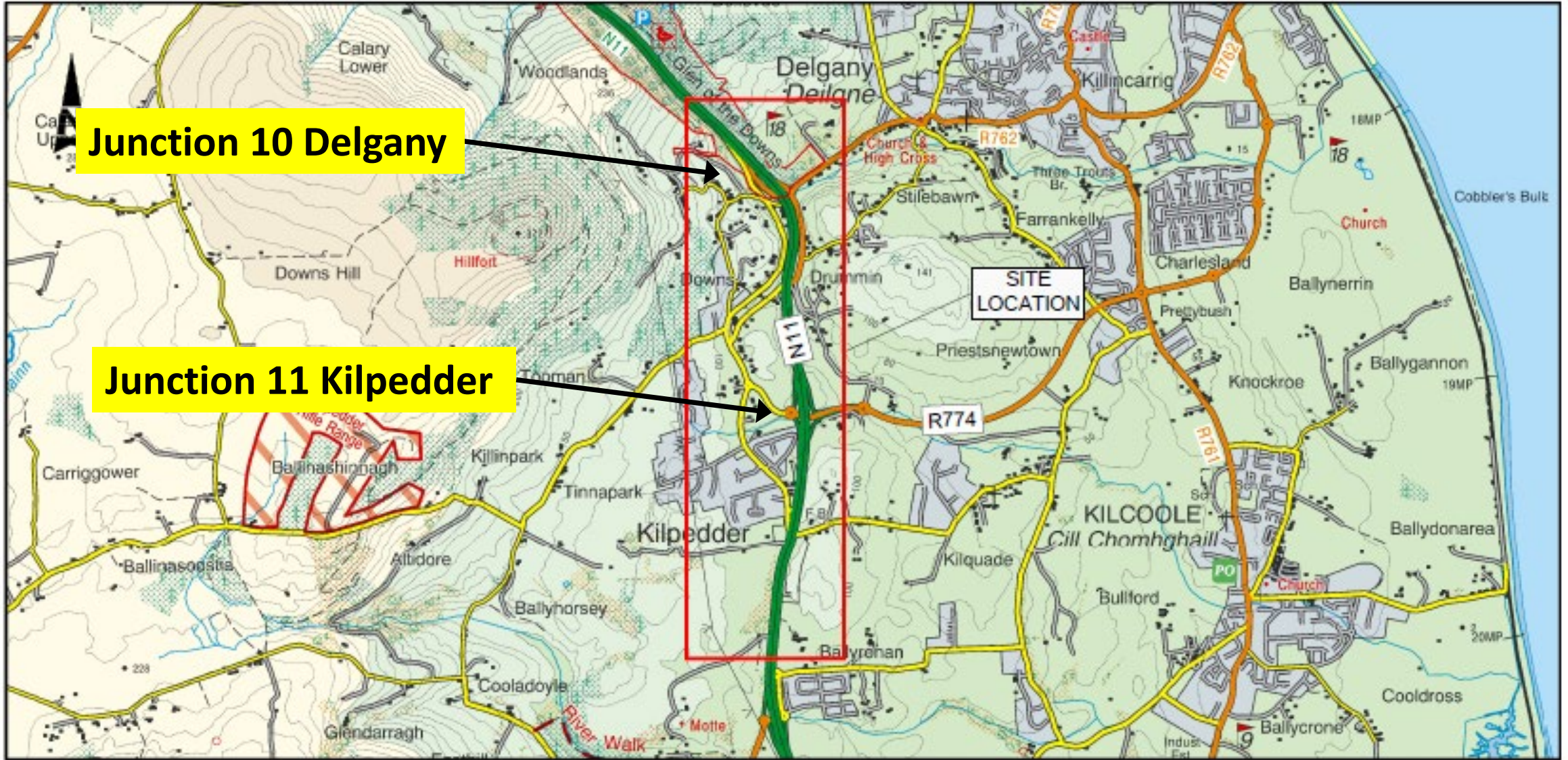
## N11 Kilpedder 'Rat-Run' Road Safety Improvement Scheme

### Part 8 Briefing Summary

27<sup>th</sup> & 28th April 2026



# Location



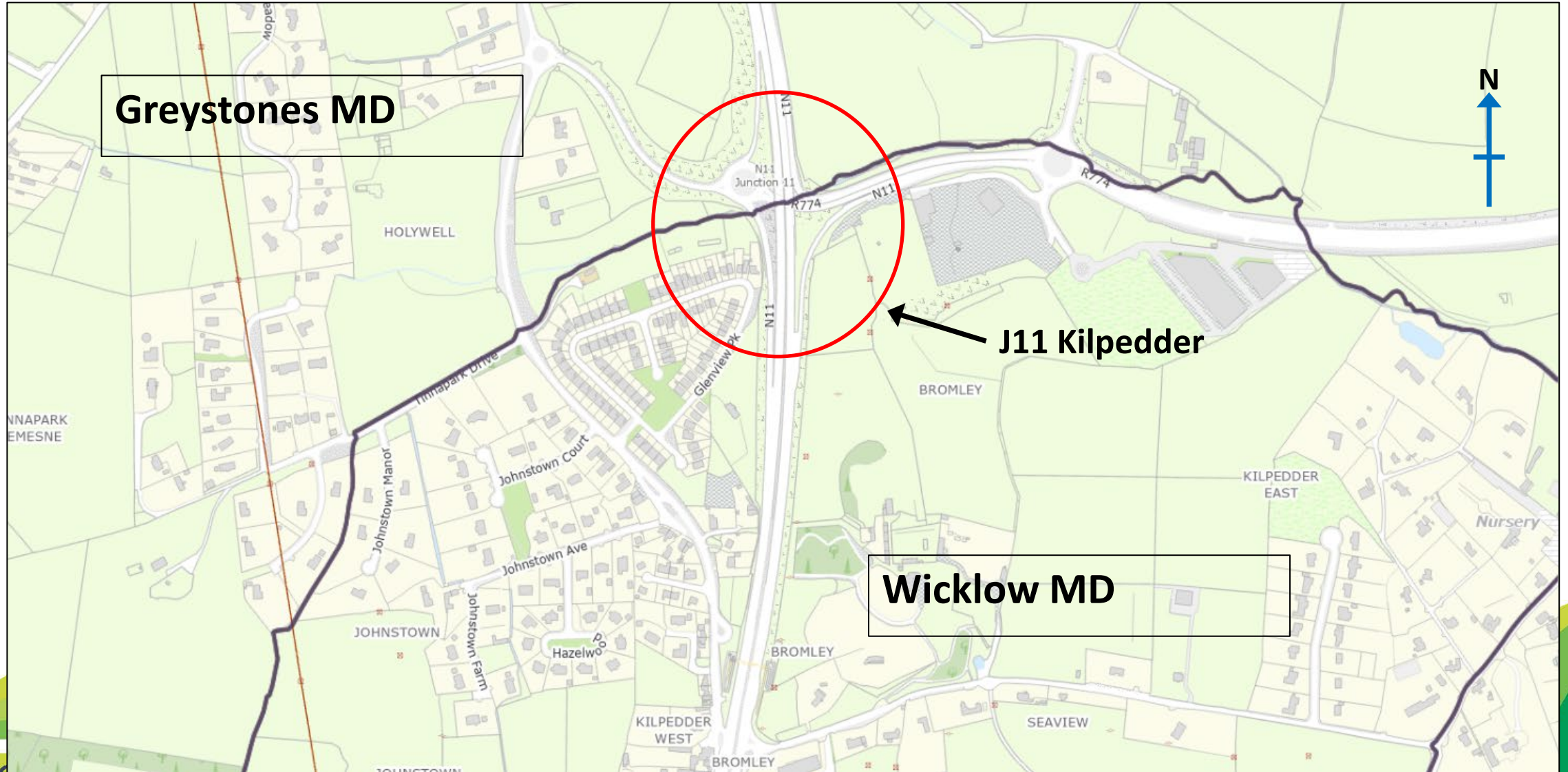
**Junction 10 Delgany**

**Junction 11 Kilpedder**

**SITE LOCATION**

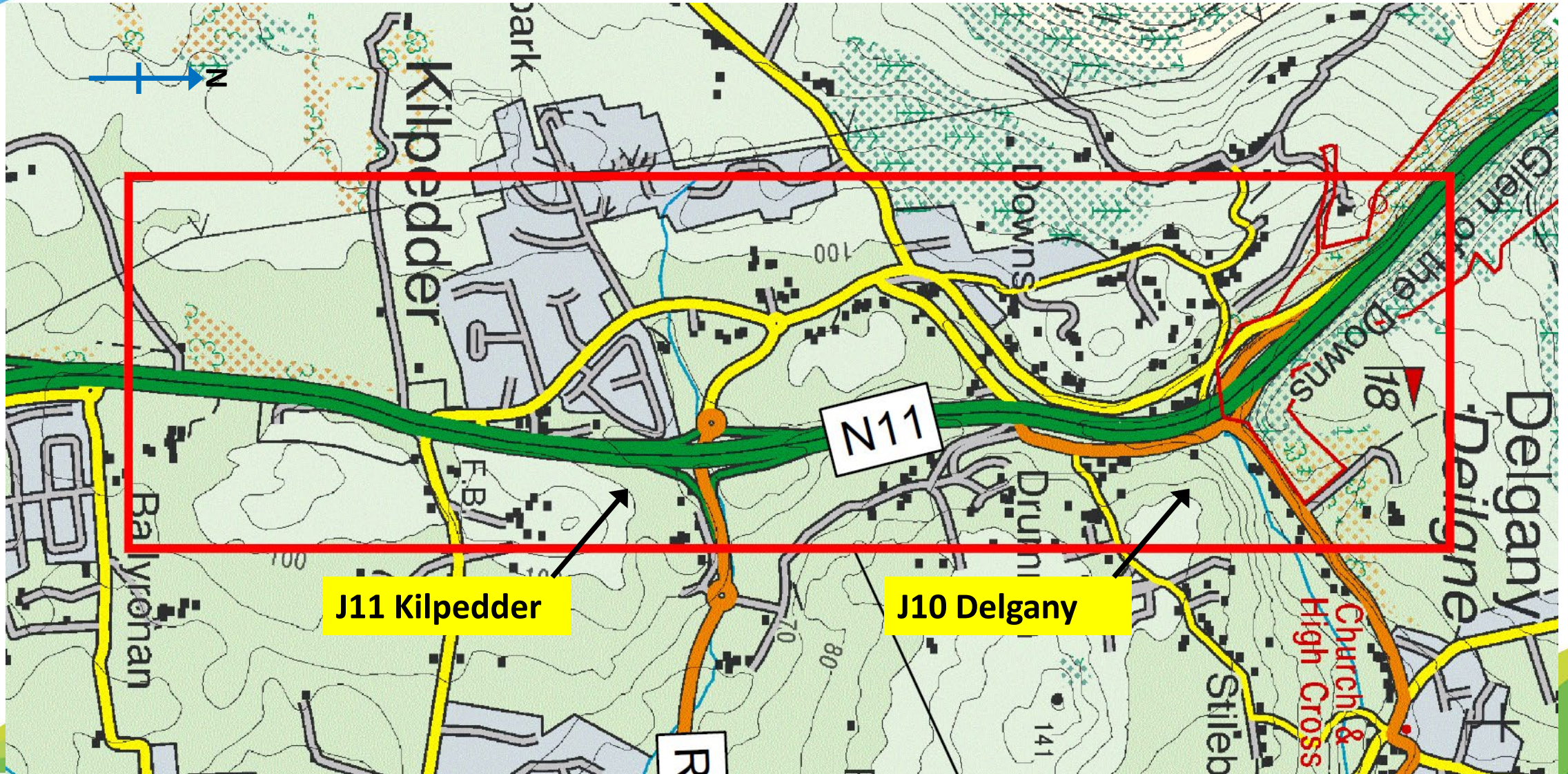


# Location





# Location

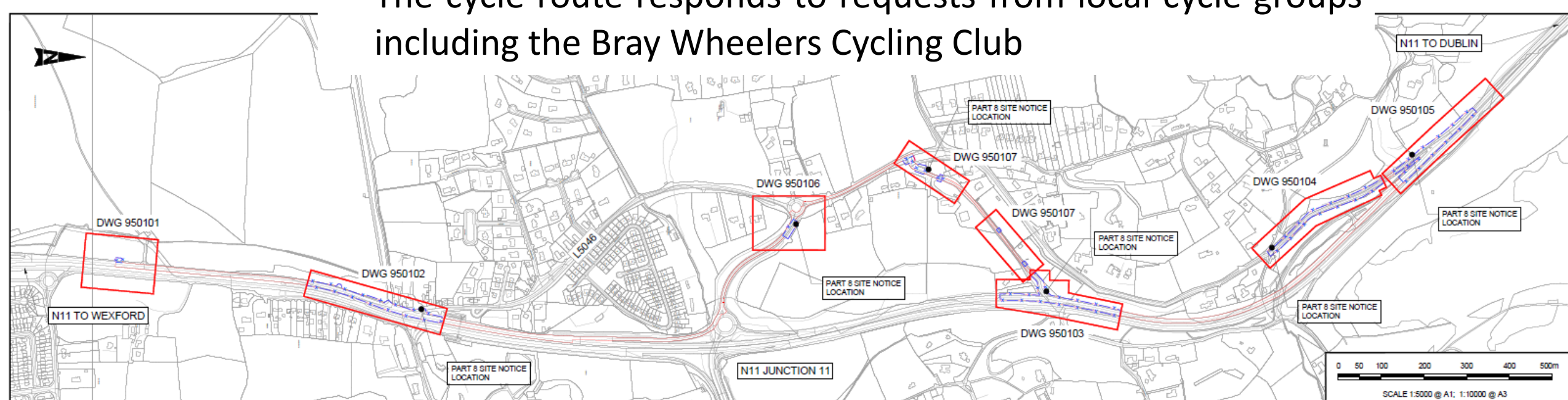




## N11 Kilpedder 'Rat-Run' RSIS

The need for the scheme: -

- The proposed scheme responds to local concerns raised regarding rat running through the village of Kilpedder during heavy traffic flows on the N11
- The cycle route responds to requests from local cycle groups including the Bray Wheelers Cycling Club

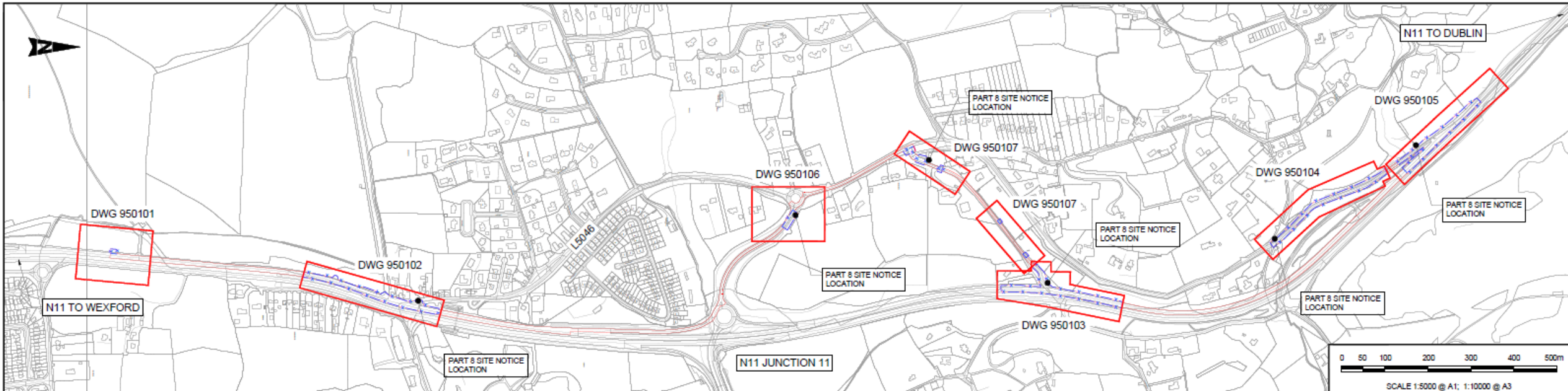




## N11 Kilpedder 'Rat-Run' RSIS

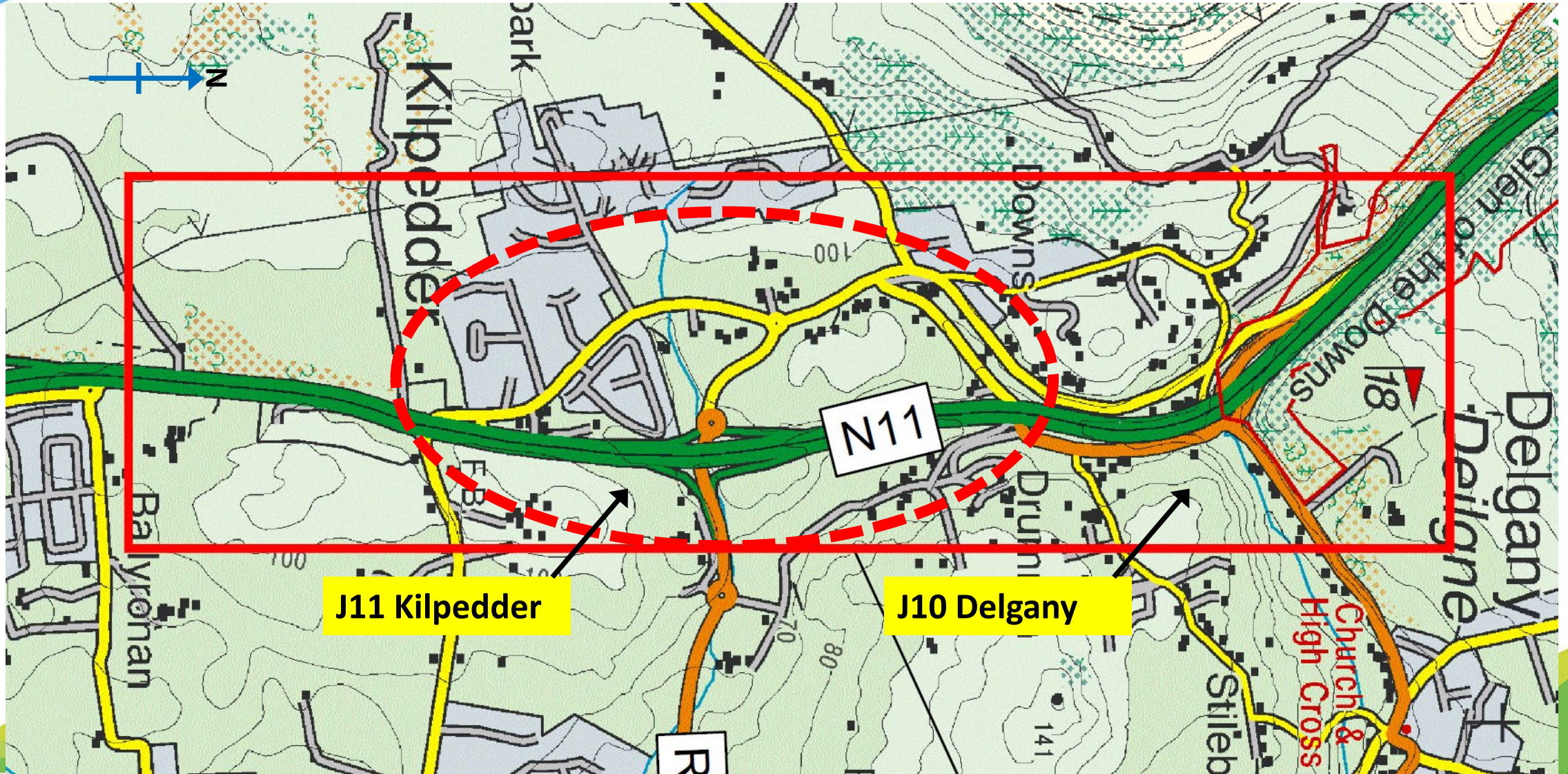
The proposed scheme aims to: -

- Remove traffic rat-run through Kilpedder village
- Provide safe cycle route bypass of J11 & J10 northbound
- Improve safety for N11 traffic





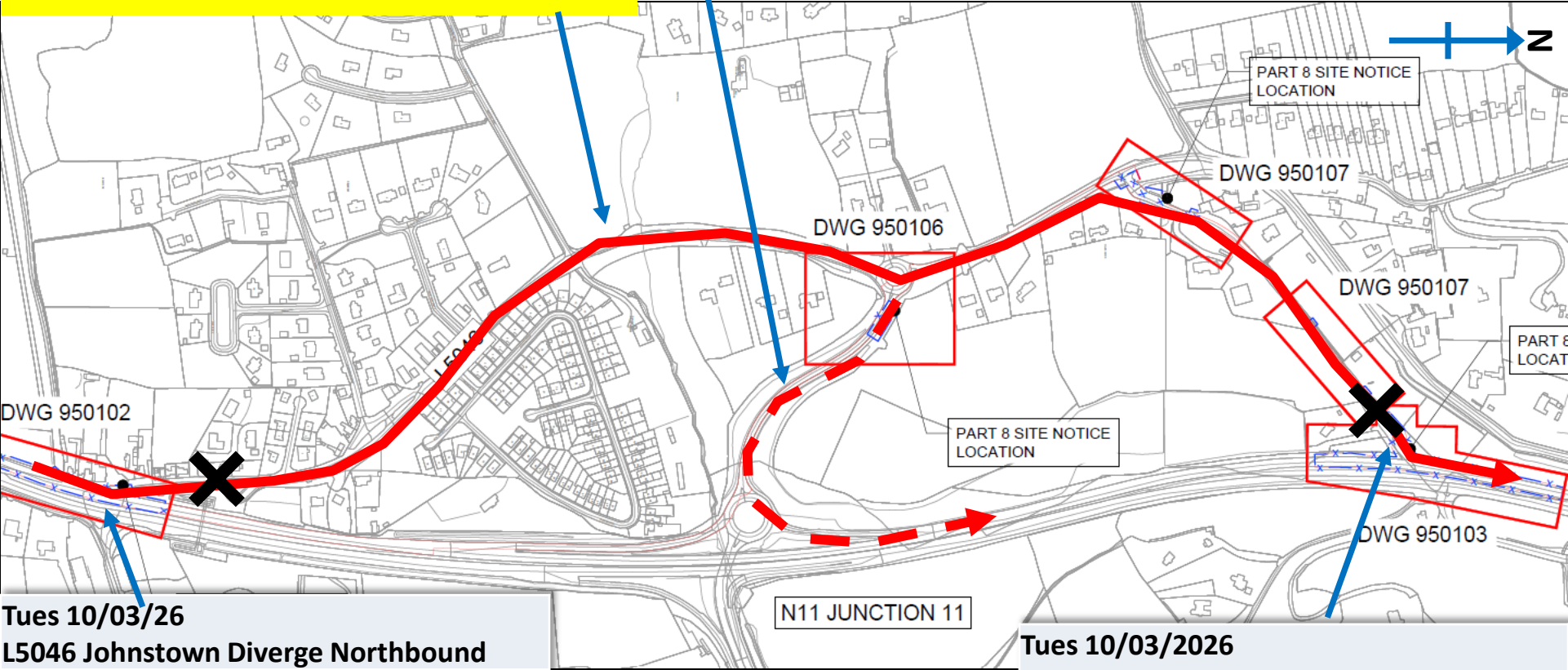
# 'Rat-Run'





Tues 10/03/2026 Eastbound	
06:00 to 10:00 AM Peak	495
00:00 to 00:00 24 hours	1661

## 'RAT-RUN' TO BE REMOVED

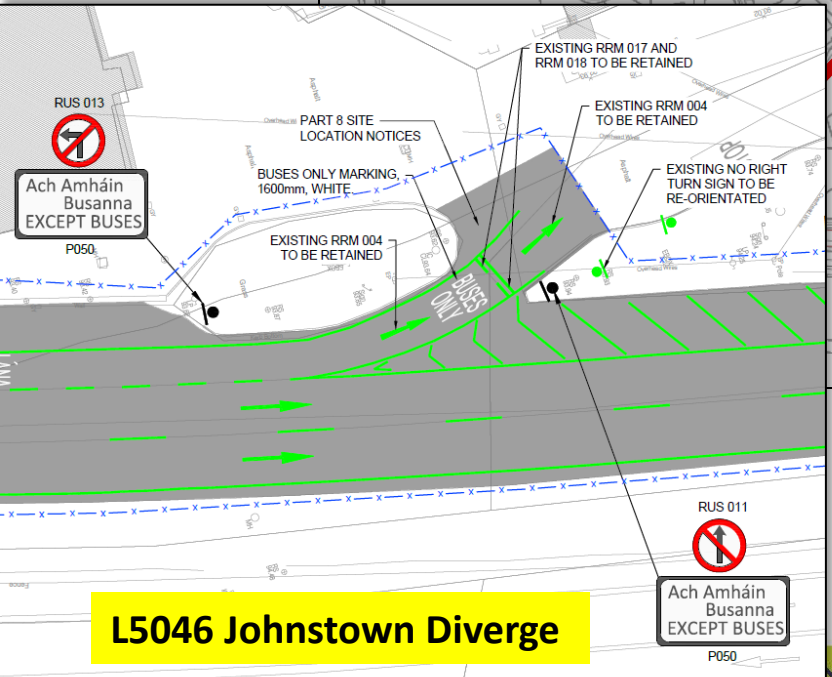
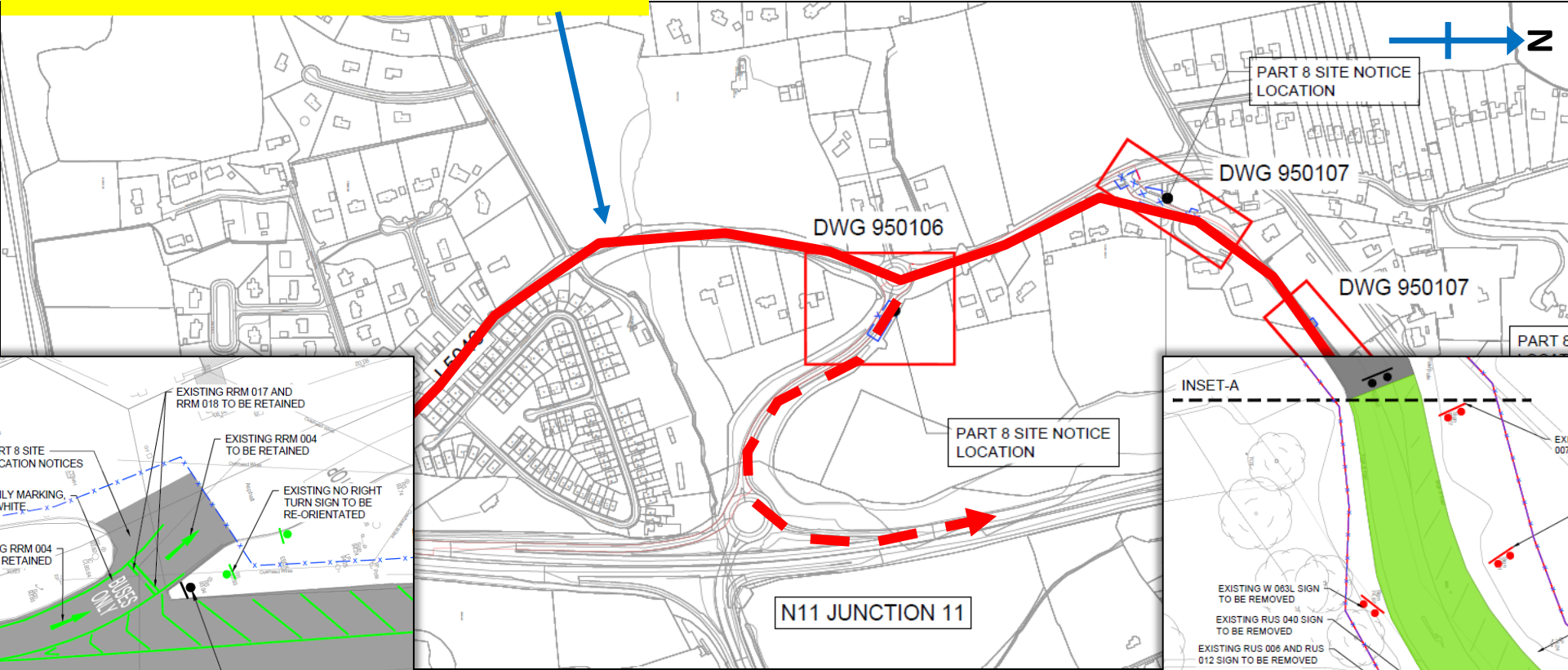


Tues 10/03/26 L5046 Johnstown Diverge Northbound	
06:00 to 10:00 AM Peak	1023
00:00 to 00:00 24 hours	1515
No. Speed Exceedances	27
% Speed Exceedances	1.782%
85% Speed	42.48km/h

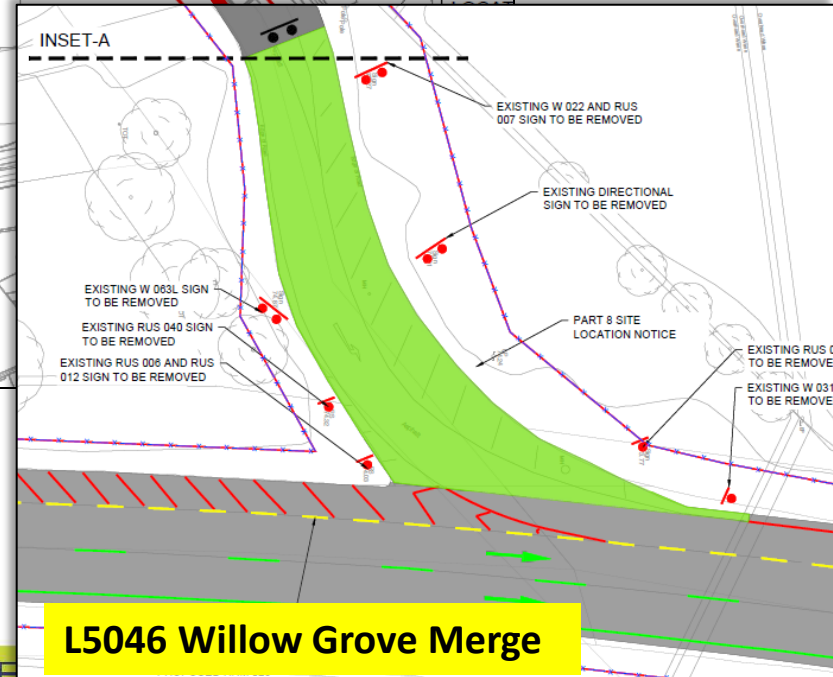
Tues 10/03/2026 L5046 Willow Grove Merge Northbound	
06:00 to 10:00 AM Peak	1022
00:00 to 00:00 24 hours	1378



# 'RAT-RUN' TO BE REMOVED



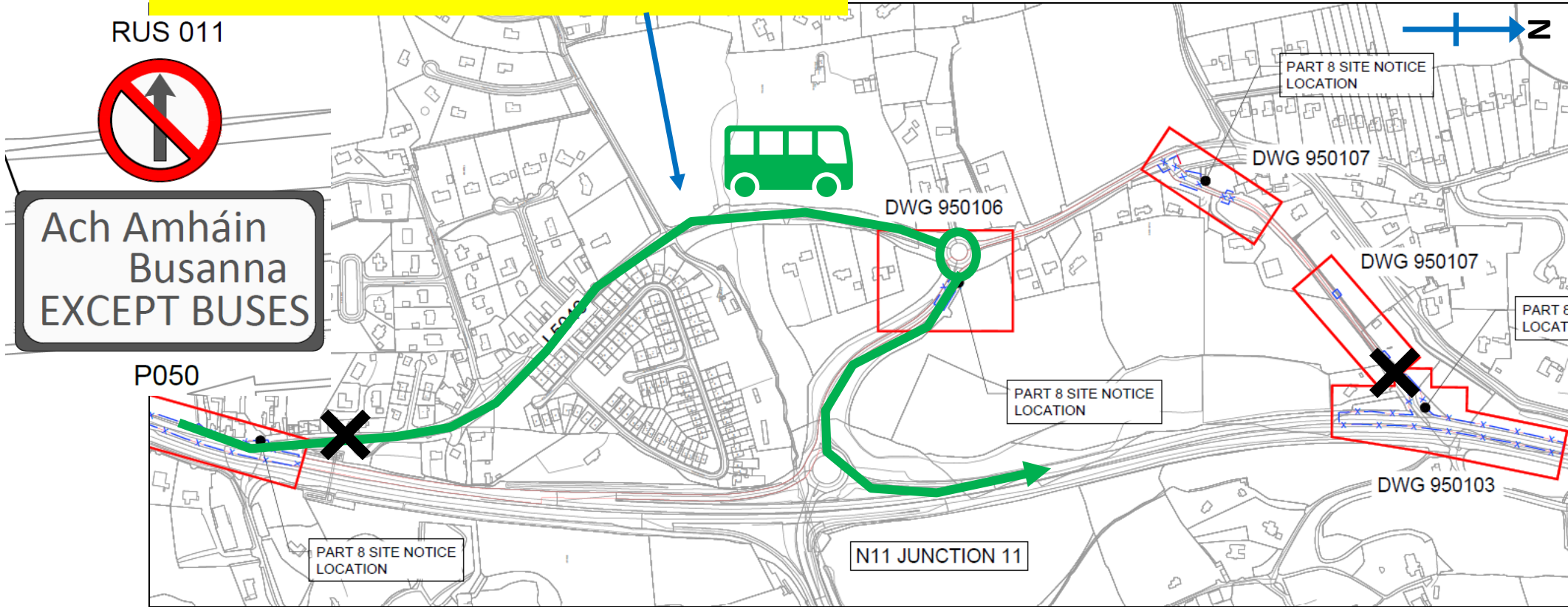
L5046 Johnstown Diverge



L5046 Willow Grove Merge

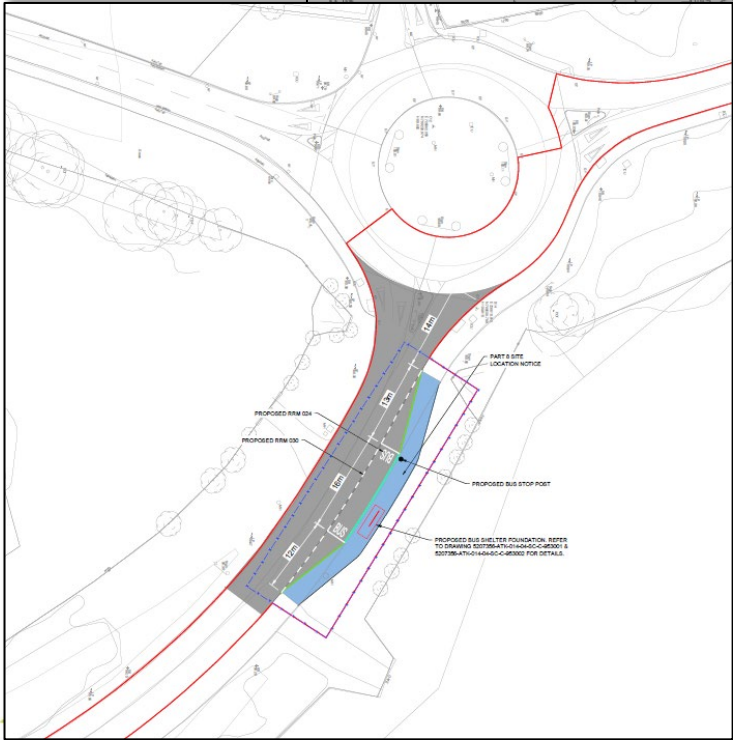
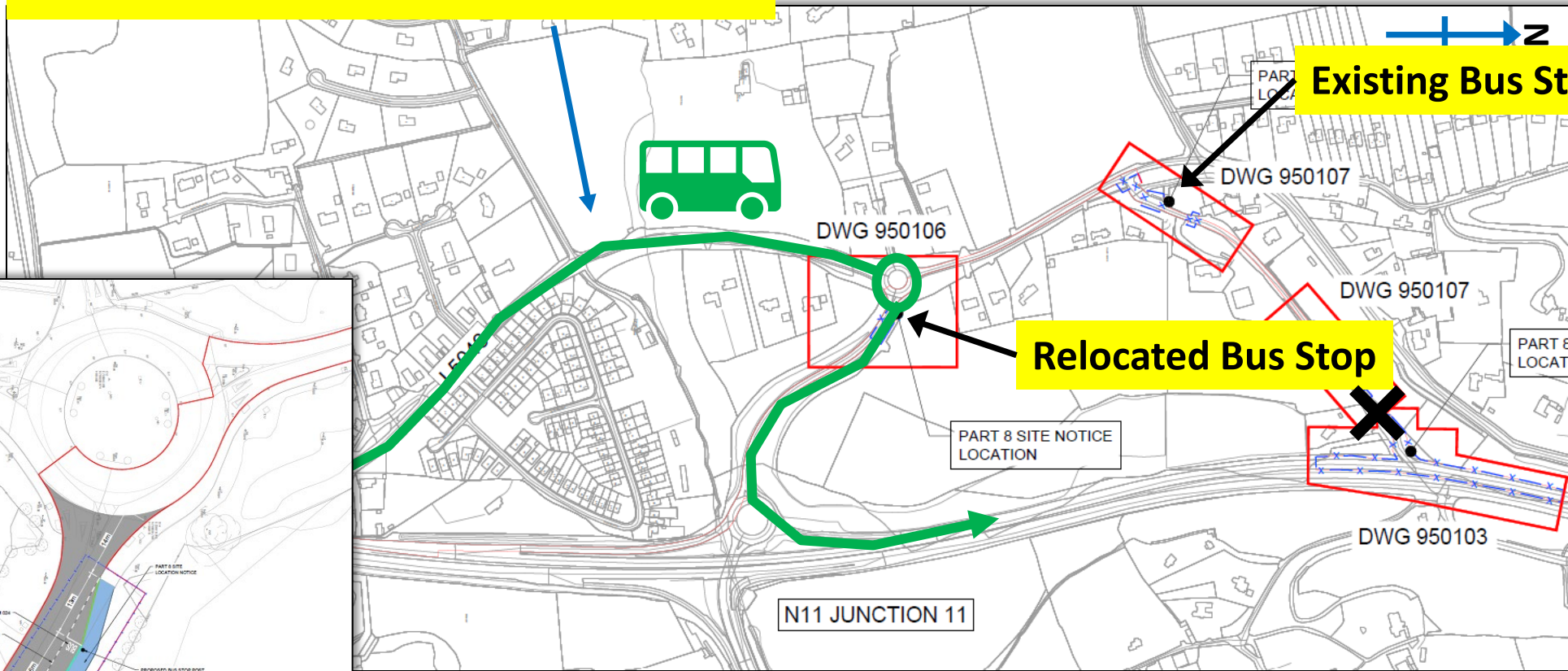


# BUS ROUTE RETAINED & ALTERED



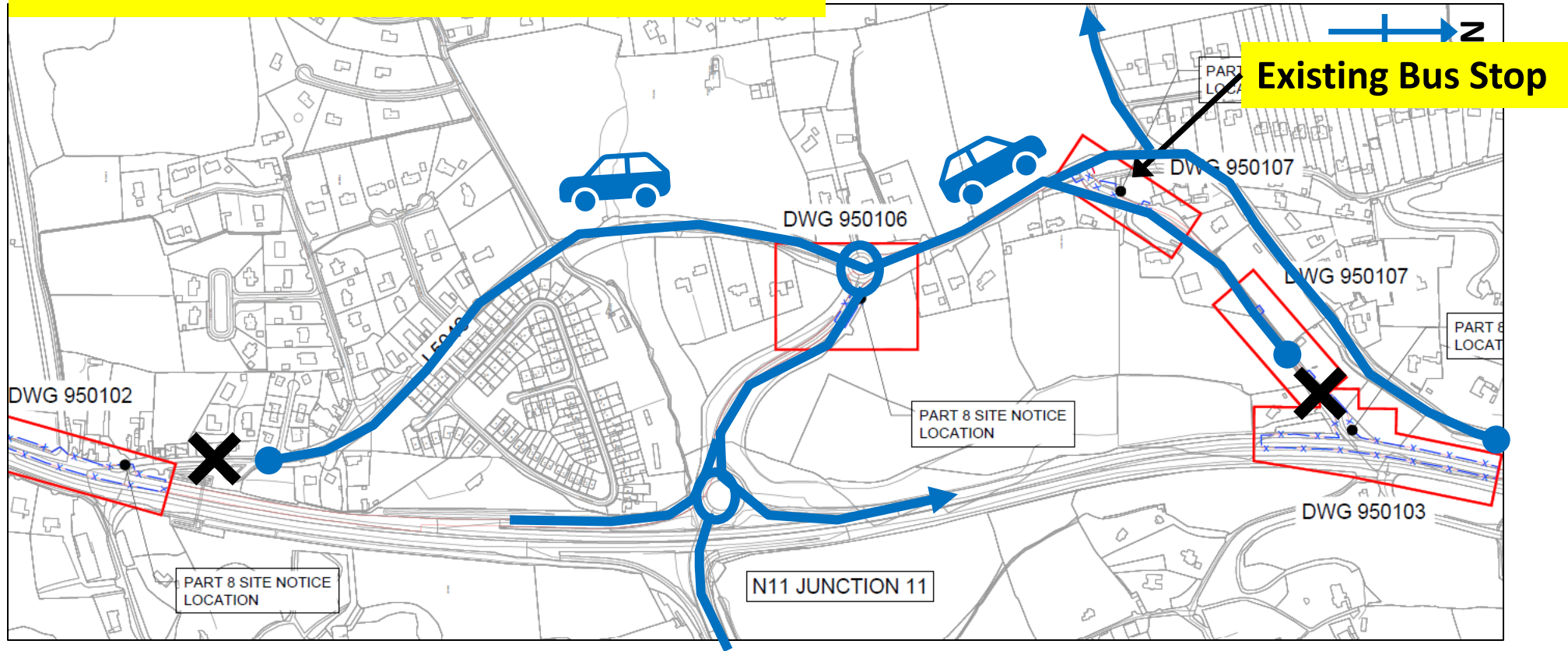


# BUS ROUTE RETAINED & ALTERED





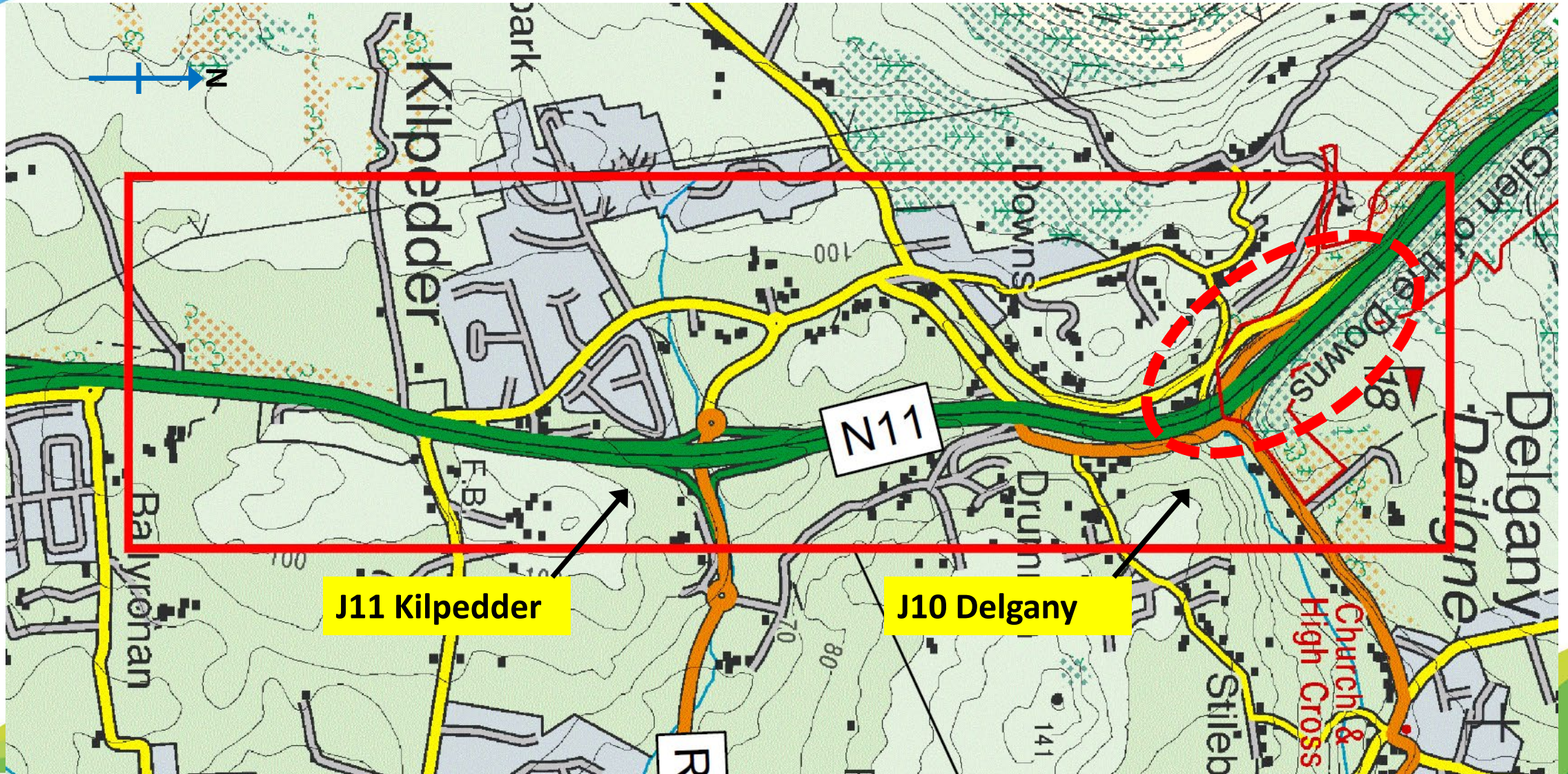
# KILPEDDER ACCESS ROUTES RETAINED

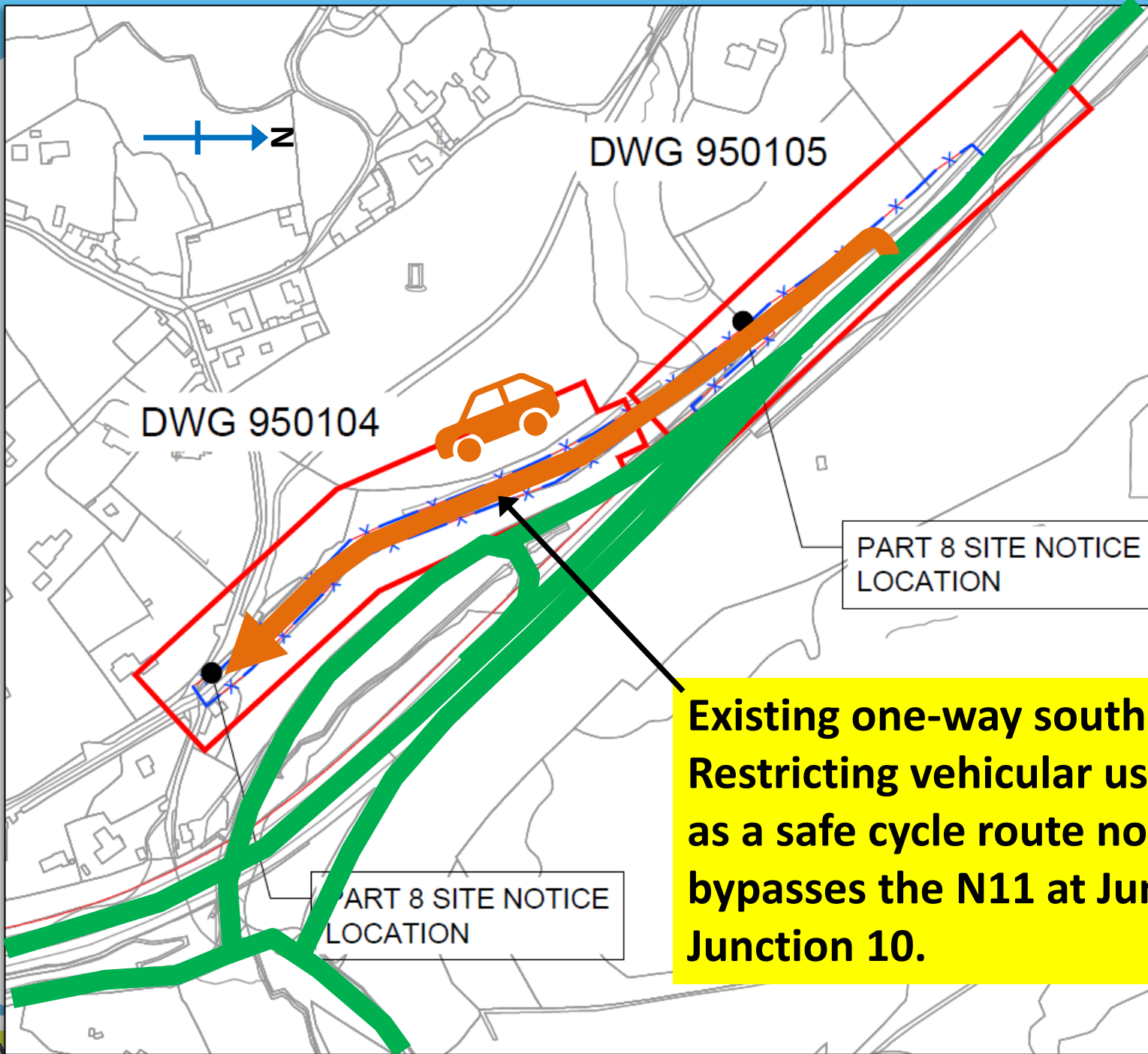






# CYCLE ROUTE

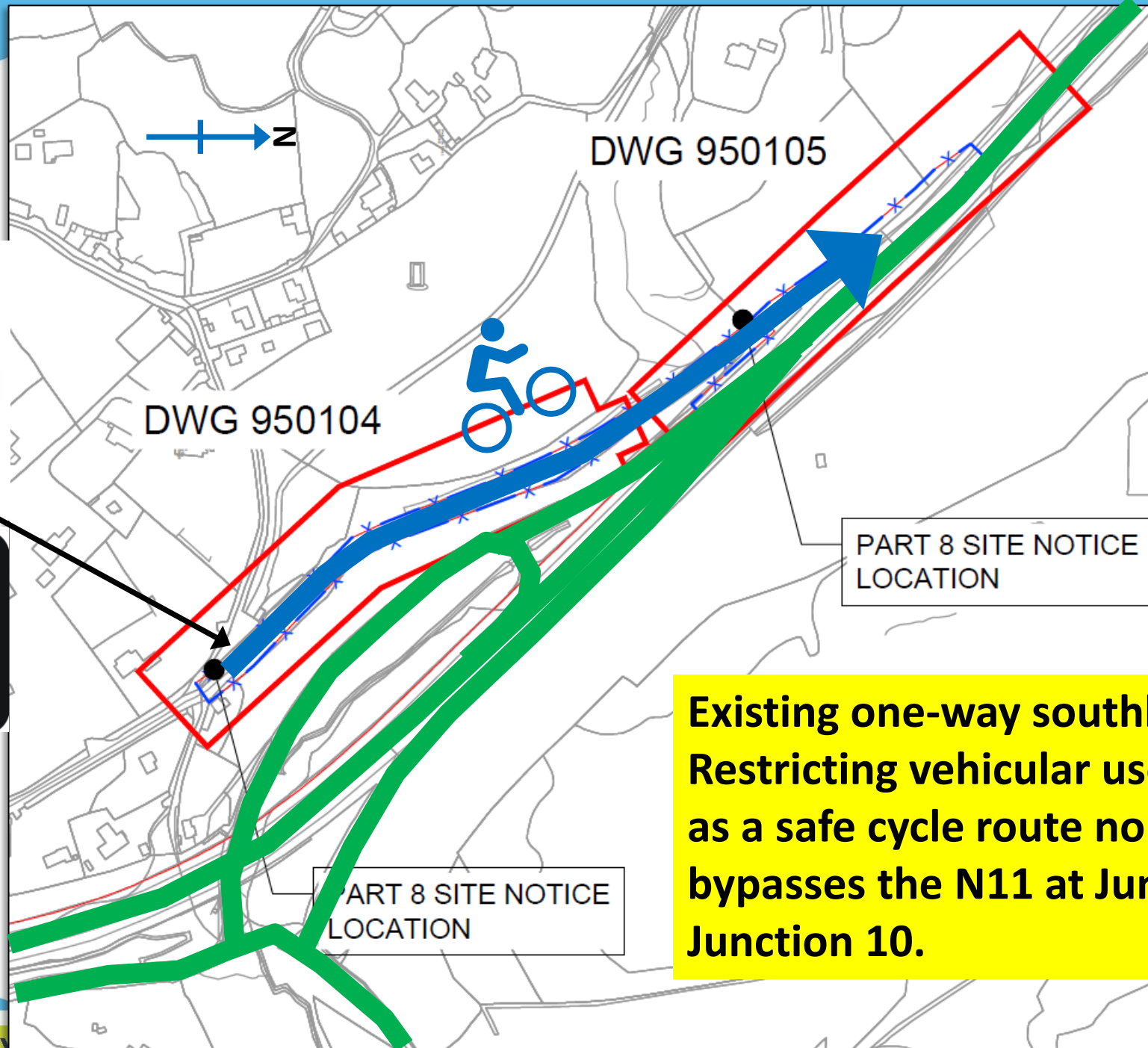




**Existing one-way southbound local road. Restricting vehicular use facilitates use as a safe cycle route northbound that bypasses the N11 at Junction 11 and Junction 10.**



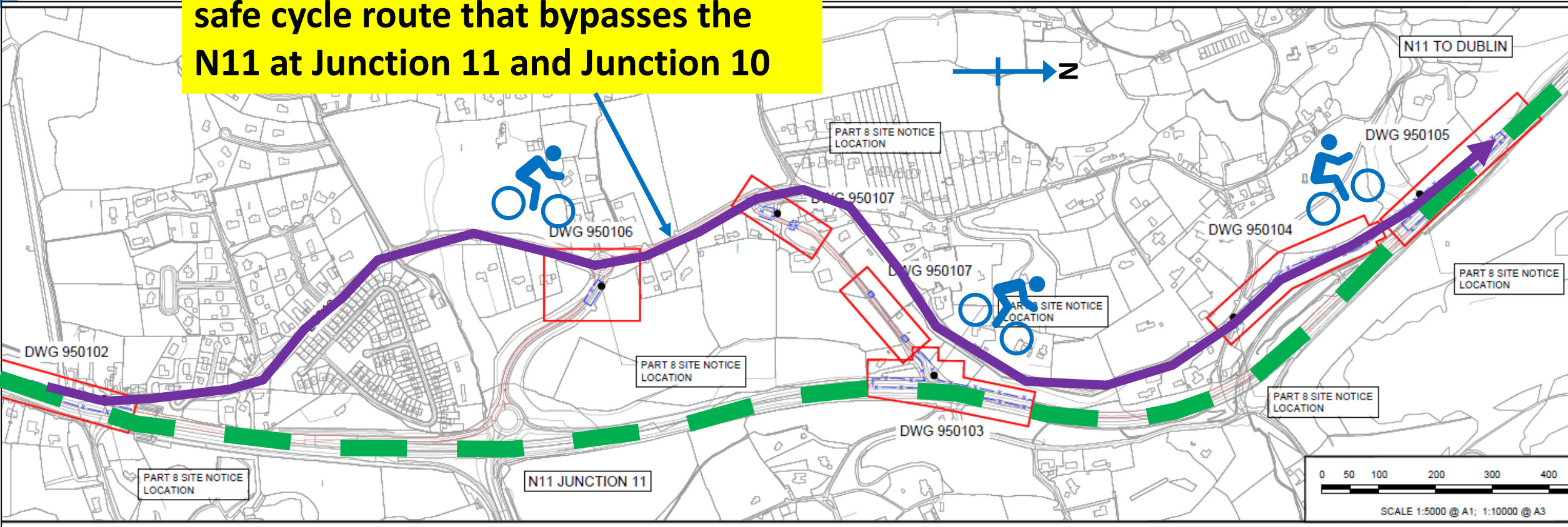
**Except  
cycles**

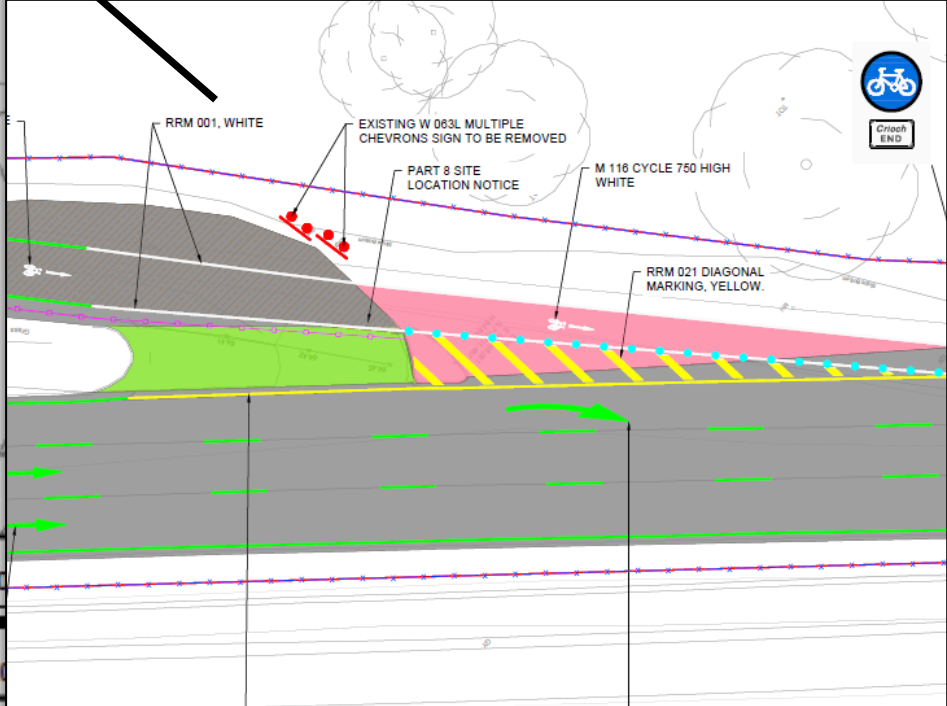
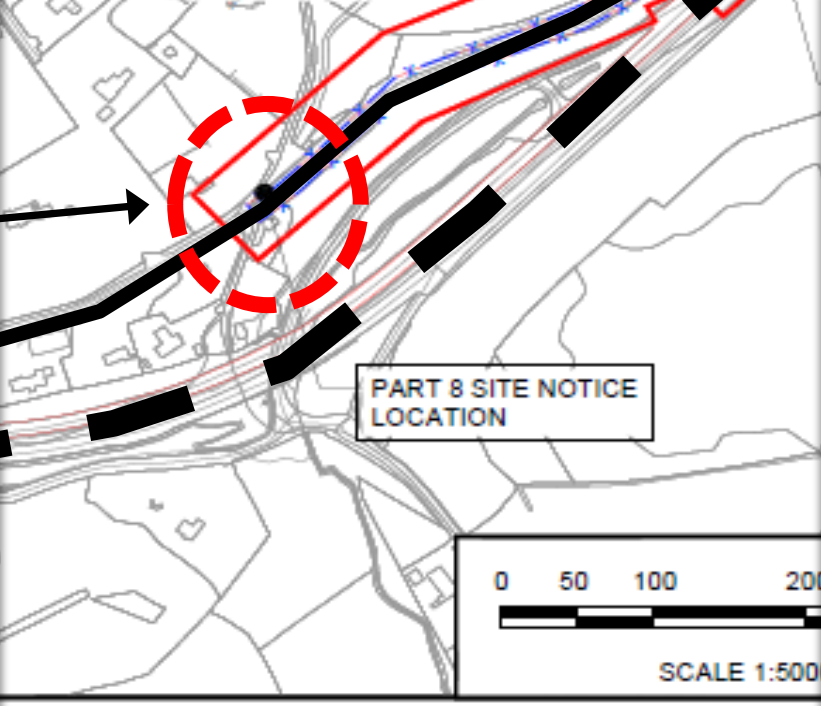
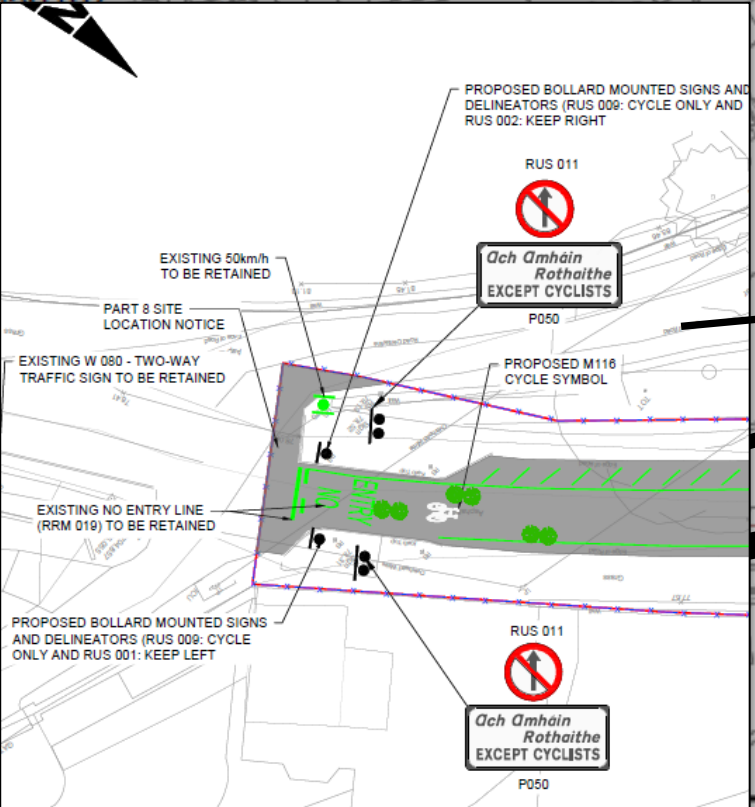
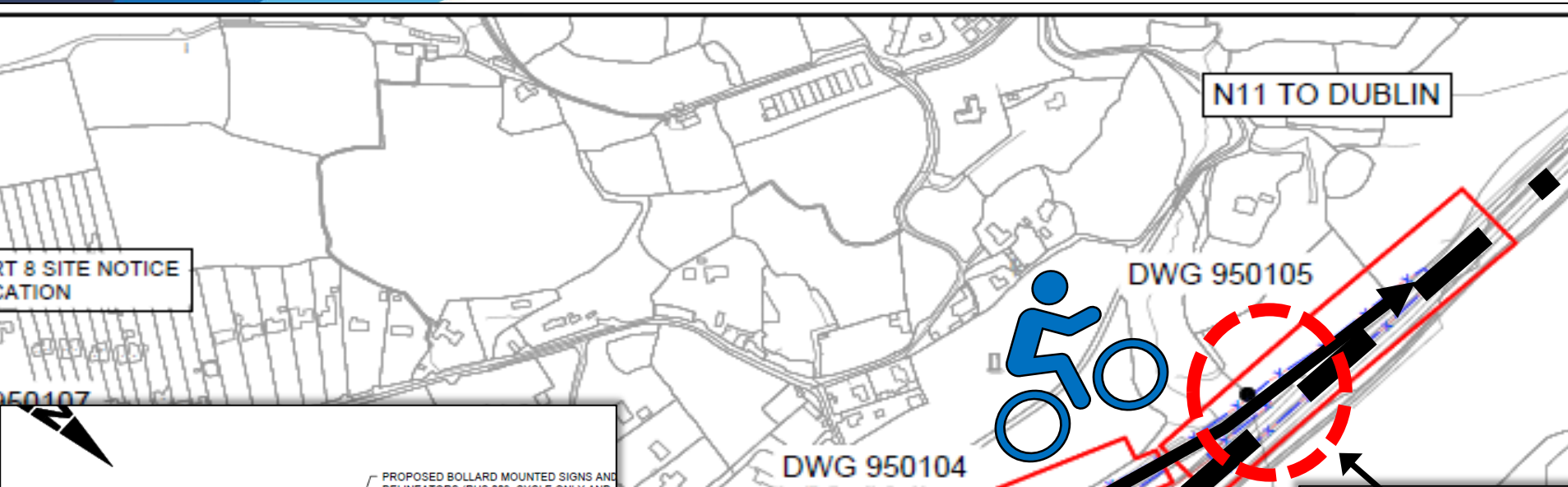


**Existing one-way southbound local road. Restricting vehicular use facilitates use as a safe cycle route northbound that bypasses the N11 at Junction 11 and Junction 10.**



The scheme proposed facilitates a safe cycle route that bypasses the N11 at Junction 11 and Junction 10





ENDLESS OPPORTUN

N11 TO WEXFORD

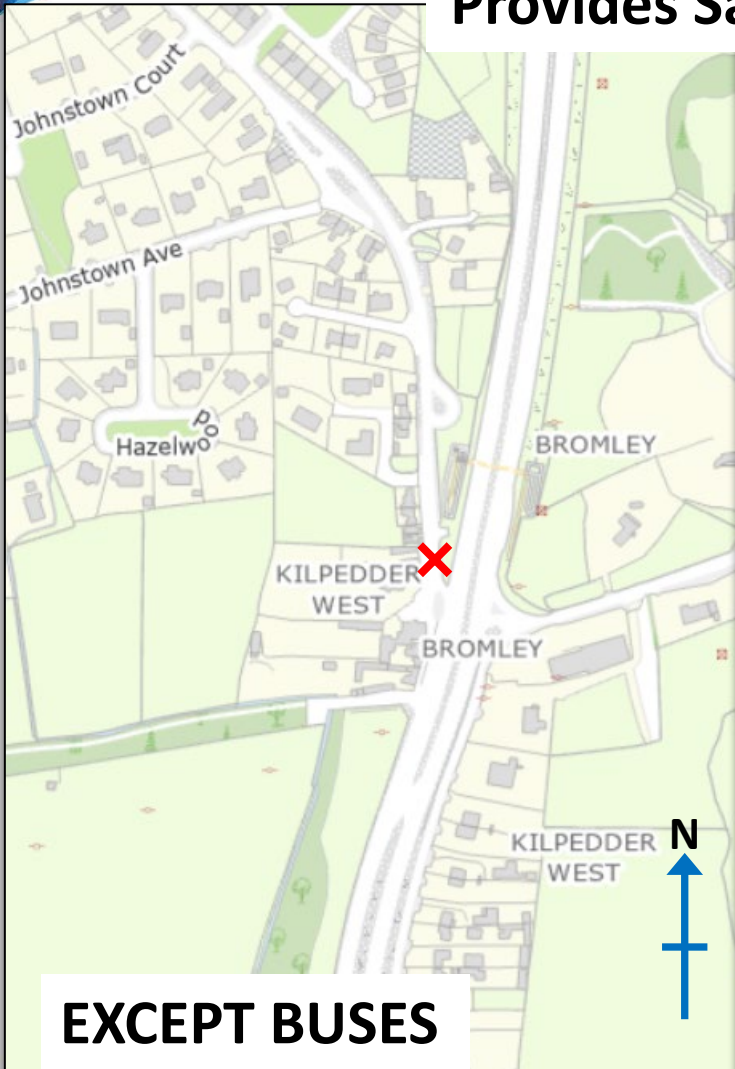


**Reroute to Kilpedder roundabout gives an equivalent drive time**





# Removal of additional substandard Merge/Diverges Provides Safety Improvements on the N11 mainline

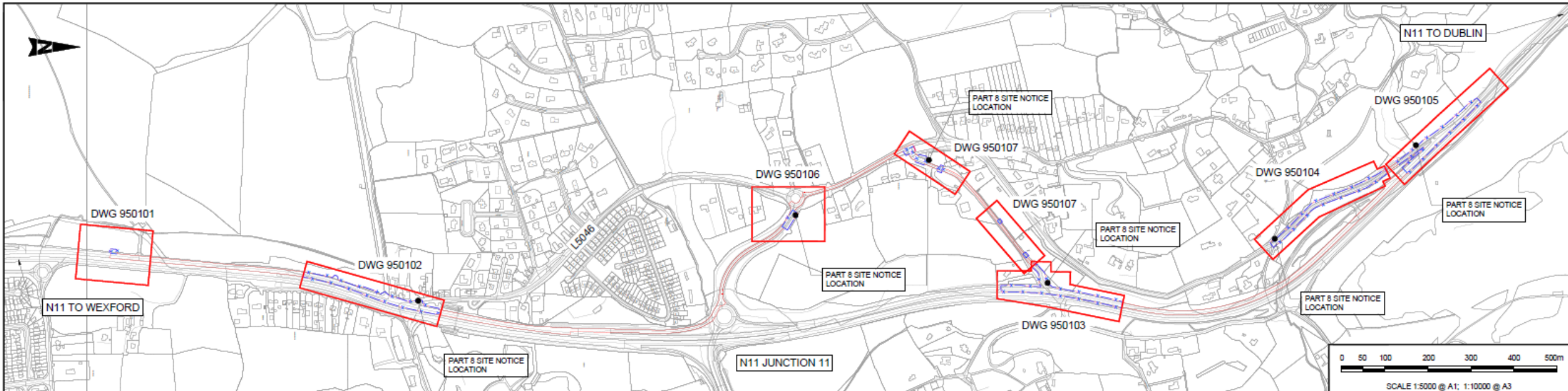




## N11 Kilpedder 'Rat-Run' RSIS

The proposed scheme aims to: -

- Remove traffic rat-run through Kilpedder village
- Provide safe cycle route bypass of J11 & J10 northbound
- Improve safety for N11 traffic





## NEXT STEPS

Part 8 Plans and particulars of the proposed development will be available for inspection or purchase during office hours Monday to Friday, excluding Bank Holidays, **between 29th April 2026 and 28th May 2026** at the offices of Wicklow County Council, County Buildings, Whitegate, Station Road, Wicklow, Co. Wicklow, A67 FW96.

Submissions may also be made by email via the following address:

[n11m11@wicklowcoco.ie](mailto:n11m11@wicklowcoco.ie) or at the online website:

[www.wicklow.ie/Living/ConsultationHub](http://www.wicklow.ie/Living/ConsultationHub)

All **submissions must be made on or before 12th June 2026**. Submissions and observations should be clearly marked **“N11 Kilpedder ‘Rat-Run’ Road Safety Improvement Scheme Part 8”**.



**Thank You**