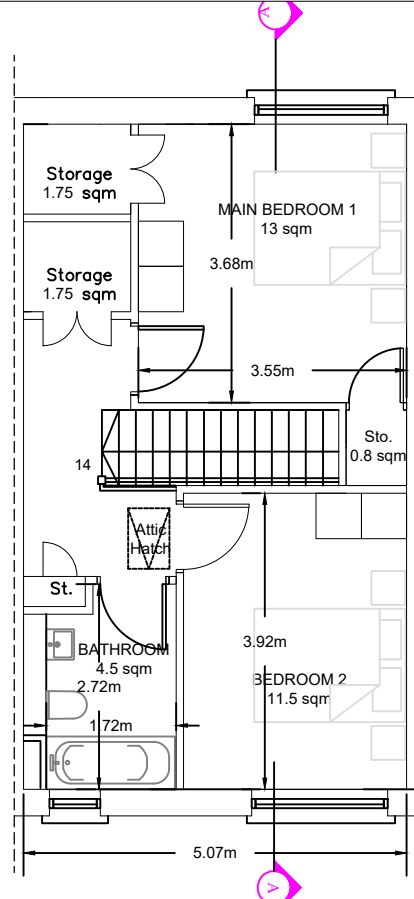
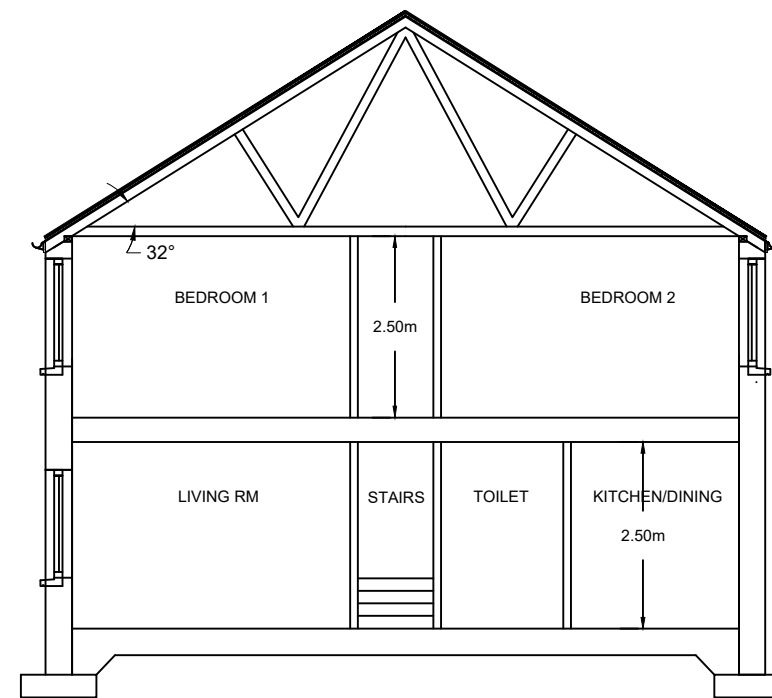


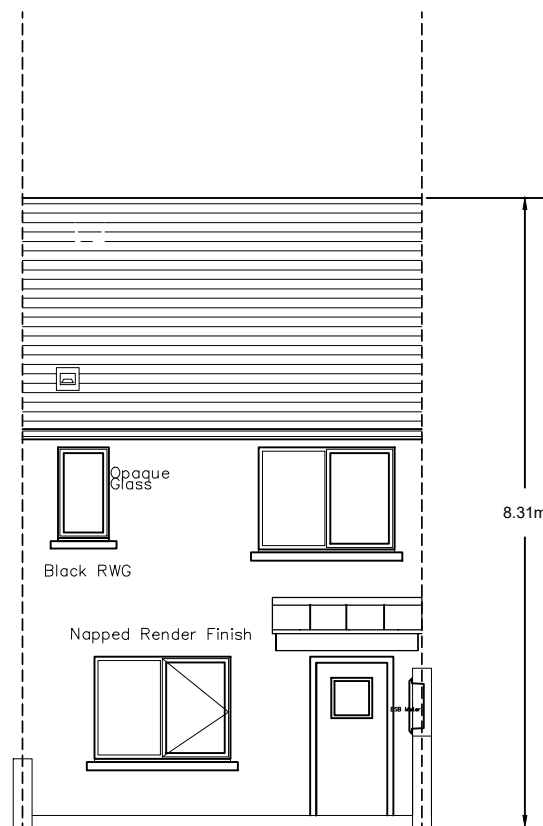
GROUND FLOOR PLAN  
(House Type C Terrace Unit)



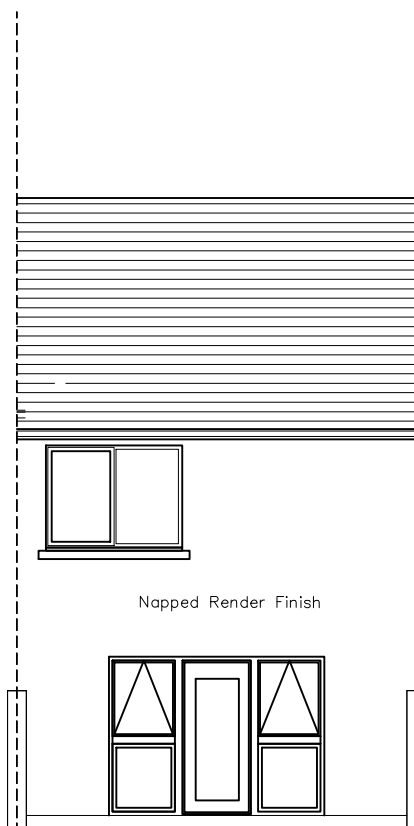
FIRST FLOOR PLAN  
(House Type C Terrace Unit)



SECTION A-A



FRONT ELEVATION  
(House Type C Terrace Unit)



REAR ELEVATION  
(House Type C Terrace Unit)

- 2 Bed 4P House Total area - 87msq (80)
- Living - 18.6msq (13)
  - Kitchen - 14.4msq
  - Bedroom 1 - 13.0msq (13)
  - Bedroom 2 - 11.5msq (11.4)
  - Storage - 4.3msq (4)

| REV:  | DATE:        | DRN BY:           | DESCRIPTION |
|---|--------------|-------------------|-------------|
| REVISIONS:  |              |                   |             |
|  <b>WICKLOW COUNTY COUNCIL</b> |              |                   |             |
| HOUSING CONSTRUCTION  |              | TEL: 0404 - 20100 |             |
| COUNTY BUILDINGS  |              | FAX 0404 - 67792  |             |
| WICKLOW   |              |                   |             |
| E-MAIL: cosec@wicklowcoco.ie  |              | www.wicklow.ie    |             |
| JOB: <b>Proposed Housing Units At Upper Dargle Road Bray</b>  |              |                   |             |
| TITLE: <b>Plans, Elevations &amp; Section (Unit Type C)</b>   |              |                   |             |
| SCALE: 1:100 @A3  | Date: Aug 22 |                   |             |
| DWG NO: UDRB/P8/102   | Drawn EM     |                   |             |
| SHEET SIZE A3   | Checked      |                   |             |
| STATUS: <b>PART 8</b>   |              | REV               |             |