

GEOLOGY

Lower Siluvian rock predominates in the geological composition of this area, and there are also tracts of light sandy soil. Generally the land is fertile but there is some waste land in the mountainous regions to the south and southwest of the town.

The unceasing action of the waves has greatly undermined Wicklow Head, creating several large caverns which are sometimes frequented by seals.

ANTIQUITIES

Abbeys, Castles, Fortresses, Round Towers, Early Churches, Sculptured Crosses, Stone Circles, Ogham Stones, Cairns, Souterrams, Pillar Stones, Cromlechs, Forts, Rathes, Moats, Tumuli or ancient monuments of any kind. Exact location of each with short description, noting condition, etc. Relate local legend or tradition associated with building or object. State if in charge of Office of Public Works. Right of way to public? Admission charges (if any). Name and address of caretaker, or where key is kept.

FRANCISCAN ABBEY; (See Archdeacon Brooke - "Gleanings from the Past")\*

In the grounds attached to the residence of the Parish Priest are the ruins of this venerable establishment, now greatly reduced. The Convent was founded by the O'Byrnes and O'Tooles, Irish Chieftans of Wicklow, during the reign of Henry III (1216 - 1272).

This venerable enclosure contains the ruins of a Franciscan Priory dating to Henry III and founded by the O'Byrnes and O'Tooles. After many vicissitudes by the courtesy of the Fitzwilliam family, the house is now occupied by the Parish Priest of Wicklow.

There is an interesting story told of how this came about. Towards the end of the 18th Century, the Parish Priest was a Father O'Toole, who resided in a humble cottage by the roadside at Ashford. The Earl of Fitzwilliam was in the vicinity collecting rents and called to the cottage for a drink. When he made himself known to the priest, they discovered that some years before, at Salamanca, Fr. O'Toole had succoured the Earl - then a wounded soldier- and, in gratitude, he gave the Abbey House to the priests of Wicklow.

BLACK CASTLE;

Founded by the Danes. The fortress was build by Maurice Fitzgerald and from the time of his death in 1178 until the 17th Century it was the scene of innumerable battles and much bloodshed. It is now a battered ruin.

Maurice Fitzgerald came to Ireland with the Anglo-Norman invaders in 1168 and took a leading part in their activities in this county. Receiving, in 1176, a large grant of property in Leinster from Strongbow, he commenced the building of a new castle at Wicklow, but his death in 1178 delayed the completion of the project. His sons were cunningly dispossessed by William Fitz-Adelm who was not allowed to enjoy his spoils for very long as his weaknesses and questionable practices led to his being recalled to England in 1179.

\**Gleanings from the Past - By Henry Rourke, M.A. Late Archdeacon of Glendalough Published by William Magee, 1895*



The Irish burned the town in 1301, and in 1375, the castle was strengthened by William Fitzwilliam whose descendants retained the constabship for several generations. The castle was frequently attacked and occupied by the Irish and in the early 16th Century the O'Byrnes captured it and held it for some time. It was surrendered with the town to Henry VIII in 1543. Luke O'Toole invested the fortress in 1641 but on the approach of Sir Charles Coote's army, was forced to raise the seige.

The ruin, which now consists merely of fragments of the ancient walls, stands on a rocky promontory overhanging the sea near the eastern extremity of the town. It's known as the Black Castle and the masonry is exceptionally durable. The earlier fortress which stood on this site was, apparently, erected by the Danes.

#### CHURCH OF IRELAND PARISH CHURCH;

The Baptismal Record of this establishment dates back to 1655 and several tombstones in the adjoining burial ground date to 1600 a.d. The actual age of the present building is doubtful but the church is remarkable mainly for the Norman Doorway in the south porch. This is a rare piece of stonework and is much admired by visitors. The stone Font is also of great age. A slab bearing a Masonic Symbol may be seen at the south east end of the church. This remained unnoticed until the building was renovated in 1912 and its origin is unknown.

Gravediggers, at work in the burial ground at the start of this century, came upon the stout walls of an early building. The masonry was found to be identical with that of the old Franciscan convent, having the same rubble-mortar grouting.

#### THE MACE;

This is now in the possession of the U.D.C. and is preserved in the Town Hall. The corporation of Wicklow was constituted by a charter of James I and consisted of a portreeve and twelve burgesses who were presented with the Mace.

Now valued at £5,000 or more, it is of unique design and similar to that of the Dublin Corporation.

#### CHURCH OF IRELAND PARISH CHURCH;

History tells of the "little church by the river", but whether it refers to the present Protestant Church or to one somewhere in the vicinity is a matter on which opinions differ. In the early part of this century, a grave was being dug near that of the famous Billy Byrne of Ballymanus, and thick walls of what appeared to be a church were disclosed on examination, the stones were found to be indential with those found in the ruins of the Franciscan Abbey, with the same rubble-mortar grouting. It may be assumed that the O'Byrnes built this church from the ruins of the Abbey, and had interred their dead within the walls.



It is impossible to fix on what date the present church was built. It is believed that when a church of St. Thomas, which was in the centre of the churchland, was demolished, another church was erected, which may have been the "Church of the Vine", mentioned in old records. This must have been quite close, as the adjacent banks are called the "Vineyard Banks" and again the stones bear similarity.

The Baptismal Record dates back to 29.3.1655 and several tombstones date to 1600 A.D.

#### THE NORMAN DOORWAY:

In the south porch, is a rare piece of stonework that has been taken from an older building. The stone font in the main entrance is also very old but it is impossible to determine its exact age.

### HISTORIC SITES

#### THE GAOL;

Situated on Kilmantain Hill is now closed. It has housed many Irish patriots including Billy Byrne, insurgent leader of 1798. In comparatively recent times it was a place of detention under the Provisional Government and Erskine Childers of "Riddle of the Sands" fame was incarcerated here after his arrest in Glendalough House, Annamoe, in 1922. Childers was executed in Dublin. In olden times, public executions took place from the large door at the top of the building - it is said that one person was hanged for the theft of a sheep!

#### THE COURT HOUSE:

Was the scene of many dramatic trials during the Land War, and Parnell's agitation.

#### "ROCKY ROAD":

Scene of the execution of Billy Byrne is now known as "Gallows Lane". Here a cart was drawn up and weighted and it's shafts fitted as a gallows. Byrne's friend Murphy was seized, tied to the rope and compelled to pulled on it till Byrne was dead. This was near the newly built cottage at the Friar's Hill side of Gallows Lane.

#### THE MURROUGH;

Famous all over Ireland. A narrow strip of flat land five miles long and 400 yards wide separates the sea from the river Leitrim. Derived from Muir - the sea and Magh, a plain. Some believe that Prince Murrough, Son of King Brian had something to do with the name, others ascribe it to Dermott McMurrough, King of Leinster, who brought Strongbow to Ireland. He certainly held sway over the district. It is now a magnificent promenade, much used by the inhabitants and visitors in summer.



HISTORIC HOUSES

- (a) Birth places or one-time residences of distinguished Irishmen or other personalities. Location and description. Present owner or occupant.  
 (b) Burial places of distinguished personalities.

TINNAKILLY HOUSE;

Captain Robert Halpin (of Atlantic Cable fame) lived for some time at this house which is two miles from Wicklow town, on the Rathnew road. It is now the residence of Miss Halpin, his daughter, who possesses several interesting relics associated with her father's most proud achievements. These include some sections of the original Atlantic Cable, a hugh working model of the "Great Eastern" which was courteously loaned to the Chicago Exhibition some years ago - being insured for a large sum, and a number of interesting prints of sailing ships which are eagerly sought after by the British Naval authorities for their Museum.

The house is not open to casual visitors but Miss Halpin is always pleased to exhibit the souvenirs to interested parties.

Capt. Halpin died at Tinnakilly in 1894. He had been born in 1836 in a house which stood adjacent to the stone bridge over the Leitrim River at Wicklow.

At the entrance to the farmyard at Tinnakilly, an old church bell hangs suspended from a wooden beam. The figures of a bishop with mitre and a crucifix with a woman at the foot and the Virgin and Child are represented and the following inscription has been chiselled out;-

"LAN 1771 AT ETE FAIT PAR HEBAN LE FLIS ET  $\neq$  PAR HERBA LE FLIS. TTE PESSE 248  
 I EYESSE 288 EN TOUT"

(Year 1771 I have been made by Heban the Son and by Herba the Son. I weigh 248 lbs. I weigh 288 lbs in all)

CURIOSITIES

Curious objects, structures, monuments, landmarks, sights, etc. For example, Wishing Stones, or 'chairs', freaks of nature, (i.e. grotesque rock formations), in fact, any scene or object which may be regarded as queer, quaint or mirth-provoking. Location and description. Any story or legend to be related.

There is a slab with a Masonic Symbol on the south east end of Wicklow Church of Ireland Parish Church. This remained unnoticed until the building was renovated in 1912 and its origin is unknown.

There was a Stone Gargoyle on the west corner of the south wall, but this was defaced by workmen during repairs in 1878.

The Trees in Abbey Street on the side of the road are interesting. When the railway was continued and the present station built, the Grand Jury wished to cut a road through the Abbey Grounds, to shorten the road to the Court. The Parish Priest of that time refused, but after persuasion, allowed them to widen the road and take in some of the Abbey Grounds. The trees were left, after the road was widened.



CURIOSITIES, (CONT.)

CHURCH BELL; at Tinnakilly House, at entrance to Farmyard.  
Inscription;

LAN. 1771. I. AT. ETE. FAIT. PAR. HEBAN. LE. FLIS. ET. PAR. HERBA. LE. FLIS.  
TTE PESS 248 I EYESSE 288 EN TOUT.

(Cut in wood suspending bell) Figures; Bishop with mitre and crucifix with woman  
at foot. Virgin and Child.

Trans; Year 1771 I have been made by Heban the Son and by Herba the Son.  
I weigh 248 lbs. I weigh 288 lbs in all.

CUSTOMS, PATTERNS, ETC.

Brief account of old customs, traditional cures, etc., still practised in the  
district. Pilgrimages to Holy Wells, Shrines, etc. Patterns.

On Bride's Head, near Wicklow, is a well, reputed to have extraordinary qualities.  
It is said that if a girl kneels and drinks from it, she will be married within  
the year. There is a disused limekiln which was once the Shrine of St. Bride,  
local fishermen used to pray before going salmon fishing.



HISTORIC SITES ( CONT)

Prior to the Anglo-Norman invasion of 1169, Wicklow is believed to have been held by the Danes and to have been one of their principal east coast maritime stations - being called by them "vikingr-lo" (The Lake of Ships).

It was included in the large grants made by Strongbow to Maurice Fitzgerald who fortified the place against the frequent predatory raids of the Irish chieftains, O'Byrnes and O'Tooles. The O'Byrnes captured the town in the 16th Century but surrendered it to Henry VIII in 1543. Luke O'Toole laid siege to it in 1641 but, on being advised of the approach of a strong force of the English under Sir Charles Coote, he was obliged to withdraw.

Coote entered the town and perpetrated a most ghastly atrocity in the indiscriminate massacre of the inhabitants. It is related that a great many of the towns people had assembled in the church for Mass on hearing of the approach of the English. Coote ordered the church doors to be fastened and then had the building set alight, those trying to escape from the inferno were brutally butchered. Blood ran down the hillside which was consequently named and is still called "Melancholy Lane".

MELANCHOLY LANE;

Was the scene of one of Sir Charles Coote's worst butcheries. The people of Wicklow had assembled for mass on the generals approach. He ordered the doors of the Chapel to be fastened, and then set ablaze to the building and had the people butchered as they tried to escape. The people's blood ran down the hillside, and so the place got it's name.

PAIDÍNS ROCK:

Tradition has it that St. Patrick landed on this rock at the mouth of the Vartry River (it can be seen at the back of the East Pier). He is supposed to have travelled on to TRAVILAHAWK BAY where he met with a hostile reception from Nathi and his celts. There is some dissension about the origin of the name - some contend that it derives from the fact that the natives sought to annoy St. Patrick by torturing his favourite hawk. Scholars say the name is simply "Trá Maoili an tSeobaic" - the strand of the bare headland of the hawk.

HISTORIC HOUSES; BURIAL PLACESCHURCH HILL CEMETRY;

Burial ground of both Catholics and Protestants, is one of the most ancient in the country - some of the stones date to A.D. 1600. Famous as the burial place of Billy Byrne of Ballymanus, heroic 1798 leader. Later, Capt. R.C. Halpin, of Atlantic Cable fame, was interred there.

"Vineyards" are also known as Nalhis Mount, from Nalhi of St. Patrick's time.



TOWN HALL; houses the MACE. This is of great interest. It was presented with a Charter to the Portreives and Burgesses of the town, who are now known as the Urban District Council. There is only one other Mace in Ireland of similar design, that of the Dublin Corporation. Both Maces were presented at the same time.

The reason for this presentation to Wicklow was, that James I also presented the town with an Estate - the Corporate Estate. The Mace was placed on the Council Table during meetings in order to render them legal. It is valued at about £5,000 and is probably worth more.

1942.



PUBLIC MONUMENTS

BILLY BYRNE MONUMENT; In the Market Square is a life-size figure of the famous leader, Billy Byrne, who was executed from a tree in Gallows Lane near Abbey Street and buried at Church Hill cemetery, Wicklow. The figure is on a granite pedestal and carries a pike.

Surrounding the pedestal are three marble plaques;

<u>RIGHT</u>	<u>LEFT</u>	<u>BACK</u>
W.M. Byrne	Holt	Dwyer

On the front of the pedestal a Celtic Cross with maid and wolfhound are depicted and Holt, Michael Dwyer and W.M. Byrne are represented on marble plaques on each of the other sides.

The front and one side bear Gaelic inscription which is translated into English on the other side as follows;-

"This monument has been erected by the people of Wicklow county to commemorate the heroism and sacrifices of;  
William (Billy) Byrne, Michael Dwyer, Joseph Holt, William Michael Byrne and the other Wicklow men who participated in the struggle for their country's freedom in the revolutionary movements of 1798, 1803, 1848, 1867  
God Save Ireland"

Arklow	Ballyellis	Baltinglass	Carnew
Donard	Dunlavin	Glendalough	Glenmalure
Imaal	Kaigeen	Luggelaw	Mt. Pleasant
Newtown	Rathdrum	Redna	Stratford-on-Slaney

OBELISK; In Fitzwilliam Square is an Obelisk of polished Irish granite, erected by public subscription in the memory of the late Capt. Robert Halpin D.L., who won fame as the commander of the "Great Eastern" from which the Atlantic and other trans-oceanic cables were laid.

INSCRIPTIONS ON OBELISK

FRONT	BACK;	LEFT	RIGHT;
Robert Halpin	This monument is erected by the friends & fellow townsmen of Capt. R.C. Halpin in testimony of his many estimable qualities and in proud remembrance of the distinguished services he rendered telegraphy in all parts of the world	Capt. R.C. Halpin J.P.D.L. Commander R.N. Reserve Marine Superintendent. Telegraphic Construction & Maintenance Co. Ltd. Nautical Assessor High Court of Judicature. Member Local Marine Board, Port of London. Junior Brother, Trinity Corporation	1866 First Successful cable across Atlantic 1869 French Atlantic Cable - Longest in the World 1870 Suez to Bombay 1871 Java to Australia 1874 Maderia to Pernambuco and others TOTAL; 23,000 Miles



★ SERVICE

★ PLEASURE

★ COMFORT

# MAGHERYMORE HOUSE

## WICKLOW



MAGHERYMORE HOUSE

Situated at the seacoast in one of the most lovely parts of Co. Wicklow, mid-way between the well known Silver Strand and Brittas Bay, this ideal Holiday Hotel is within one hour's run of Dublin.

Standing in its own beautiful grounds of over 500 acres, Magherymore offers every conceivable amenity to those who desire a really happy, restful and carefree Holiday in perfect surroundings.





Above—THE GRAND STAIRCASE

### THE MANSION HOUSE

is a beautifully appointed residence, and contains spacious reception rooms, library, dining-room, billiardroom, ping-pong and darts room. There is an all-electric Radio-Gram installed for the benefit of the guests. Periodical Dances are arranged. The many single and double bedrooms are large and sunny, overlooking the sea and the Wicklow mountains.

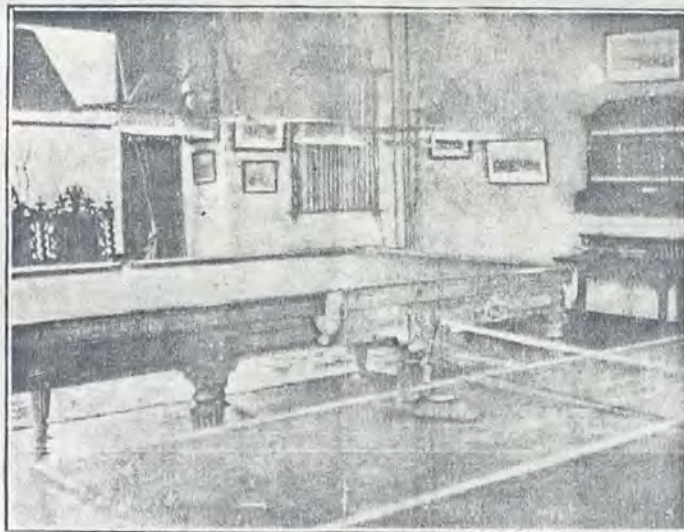
The whole mansion is most comfortably and tastefully furnished, and dispenses a most restful, and at the same time cheery atmosphere. Unlimited hot water is always available for baths, etc.

## MAXIMUM SUNSHINE—MINIMUM HUMIDITY

The cuisine is renowned for its varied and excellent food. The extensive kitchen gardens, dairy and poultry farm provide guests with an abundance of fresh produce at all times. LIGHTING throughout is electric, from the Shannon Scheme.

### SPORT.

Shooting is available to guests over the entire property. Trout fishing is also to be had in Three-Mile Water River which bounds



A CORNER OF THE BILLIARD ROOM

the Estate on one side. Sea-fishing may be indulged in from the rocks on 2 miles of sea coast, where good catches of bass and rock-salmon are often obtained. Horses and ponies can be obtained for both Riding and Driving.

### GOLF.

There are excellent courses at Wicklow and Woodenbridge, both within easy distance.

### TERMS.

Terms are entirely inclusive except for private laundry, and the use of a car for which a small

charge is made. Intending guests are cordially invited to call and inspect the amenities of Magherymore at any time, and trains or buses can be met at Wicklow Town by arrangement.

No effort is spared to ensure the comfort and enjoyment of guests, and the creation of a really home-like atmosphere without any restrictions. The management sincerely hope that they may have the pleasure of welcoming you at Magherymore and including you amongst their very many good friends and patrons.

PROPRIETOR : J. L. Leslie-Ellis.

Below THE LOUNGE HALL







*Above* - THE BATHING STRAND

### **THE BEACHES**

which are entirely private, are situated within a few minutes' walk of the House, and are reached by a convenient tree-lined pathway. The bathing is considered the safest and best on the coast, and the beaches, which are of pure silver sand, are entirely sheltered on three sides.

### **THE GROUNDS**

which are laid out under ideal conditions, contain many rare and beautiful trees and shrubs. The tennis and croquet lawns, in their sheltered positions, are very popular retreats in the spring and summer months as is also the 9-hole putting course.

*Below* - A CORNER IN THE EXTENSIVE GARDENS









Owners of boats for hire, and charges per day;

Wm. Phillips, Castle Street,	]	
Michael Byrne, Bond Street,	]	Boatmen are not agreeable to
F. Robinet, The Mall	]	state charges per day
Geo. Ellis, South Quay	]	

Convenient angling centres (where accommodation is available);

Ashford and Wicklow

Local Angling Club \_\_\_\_\_ Membership Fee \_\_\_\_\_  
 Secretary (and Address) \_\_\_\_\_

SEA ANGLING

Brief notes on fishing grounds;

There is fair sea-fishing along the coast from Wicklow Head southwards.

**Kinds of fish to be caught;**

July and August. Trawl for mackerel

September onwards. Net for herrings

Owners of boats, type of boats, and charges per day;

See Above

Bait Available Locally? Yes Fishing Tackle J.P. Hopkins & Sons Ltd.

Representative of B.S.A.S. or other sea angling Assn. \_\_\_\_\_



GOLFINGName of Club WICKLOW GOLF CLUB No. of Holes NINE

Situation and brief description of course;

On the cliffs south of the Town, one of the best along the East Coast.Magnificent view from Pavilion, natural bunkers, well-kept greens. All year round play.

Name of Professional \_\_\_\_\_

Is there a clubhouse on course? YES Licensed? YESGreen fees (visitors); Per day 2/- Per week 8/-Monthly £1.10 Secretary; (HON) C. Walsh, The Bungalow, SummerhillRACING

(Including "Point-to-Point" and "Flapper" meetings)

No. of meetings normally held during the year \_\_\_\_\_

Under which rules? \_\_\_\_\_

Situation of course \_\_\_\_\_

HUNTING

Hounds which hunt in the district;

Foxhounds \_\_\_\_\_

Harriers BRAY HARRIERS

Beagles \_\_\_\_\_

COURSING

Name of Club \_\_\_\_\_ Meeting held annually? \_\_\_\_\_

GREYHOUND RACING

Name of Company \_\_\_\_\_

Races on (nights) \_\_\_\_\_



SHOOTING

Brief notes on shooting areas, stating kinds of wild fowl or game, and if free shooting is available;

Pheasant, woodcock and partridge etc. are fairly plentiful in parts but local farmers preserve shooting and lease to syndicates and others.

Shooting Club \_\_\_\_\_ Sec. \_\_\_\_\_

CLAY PIGEON SHOOTING

Name of club \_\_\_\_\_ Competitions Held? \_\_\_\_\_

ROWING AND SAILING

Rowing or yacht clubs, with address of club-house

GAMES AND RECREATIONS

Name of Club or Committee concerned with the following; (In each case give location of sports or recreation hall)

GAELIC FOOTBALL; Wicklow G.A.A. Club, Hon. Sec. Mr. Ned Kane

HURLING Wicklow Hurling Club/Camogie played on Murrough

HANDBALL \_\_\_\_\_ HANDBALL ALLEY? \_\_\_\_\_

SOCCER Wicklow Town United. Hon Sec. Owen Finlay

RUGBY \_\_\_\_\_

CRICKET \_\_\_\_\_

HOCKEY \_\_\_\_\_

BOWLS \_\_\_\_\_

BOWLING (ON PUBLIC ROADS) \_\_\_\_\_

LAWN TENNIS Wicklow Lawn Tennis Club KINDS OF COURTS 5 Grass



## GAMES AND RECREATIONS (CONT.)

CROQUET \_\_\_\_\_

BILLIARDS Bridge Hotel, Catholic Club, Y.M.C.A., Garda Bks.BADMINTON Church of Ireland Assembly Hall

TABLE TENNIS \_\_\_\_\_

BRIDGE CULB Wicklow Bridge Club, Hon. Sec. S. Keogh, Hib. Bank

OTHER GAMES OR RECREATIONS (inc. "Cross-Roads" dancing) \_\_\_\_\_

## ATHLETICS AND CYCLING

Name of Club \_\_\_\_\_ Events held under rules of \_\_\_\_\_

DO. \_\_\_\_\_

## ANNUAL EVENTS

Give list of annual events held in the town or parish, naming promoters (clubs, etc. in each case). Include pilgrimages and patterns.

Wicklow Regatta held annually on \_\_\_\_\_ Promoters Town Committee

August Bank Holiday. Yacht racing, \_\_\_\_\_ Hon. Sec. John Olohan

large and small cruisers, motor-boat \_\_\_\_\_

and rowing races. Cash prizes and \_\_\_\_\_

valuable silver cups. \_\_\_\_\_

Bands, cine shows, hobby horses, side- \_\_\_\_\_

shows and fireworks \_\_\_\_\_



I . T . A . TOPOGRAPHICAL AND GENERAL  
SURVEY

HOLIDAY AMENITIES AND GENERAL INFORMATION. SEASIDE RESORTS

Barony ARKLOW

Resort WICKLOW Parish WICKLOW County WICKLOW

Location and brief description of town or village; Population 3,183

Wicklow, the County Town, from its healthy situation on the lower slopes of Ballyguile hill, overlooking the bay round which it stretches, deservedly enjoys an excellent reputation as a holiday resort. The quaint-looking old town of the narrow streets is gradually being modernised and considerable improvements have been effected in recent years - yet the place has lost none of its dignified old world individuality. It possesses a deep safe harbour with two promenade breakwaters and the splendid promenade, which extends half a mile from the East Pier, is being continually improved and extended by the local authorities.

The main streets radiate from the central Fitzwilliam Square, the Leitrim River flows under a wide bridge in the lower part of the town, and, after flowing through the long narrow creek which is shut off from the sea by the Murrough, discharges itself into St. George's Channel. Being within easy reach of several celebrated beautyspots, Wicklow is a convenient touring centre.

Distances; Dublin 30.75 Miles; Bray 18.5 Miles

Description of beach (? Length, sandy, shingle, safe, currents etc.);

The Murrough, a narrow 5 mile strip of commonage, now largely developed and devoted to playing grounds and public promenade, slopes gently to the sea on the east side and thus is formed a long stretch that is alternately shingly and sandy according to the prevailing weather.



The famous 'Silver Strand', a magnificent beach of fine silvery sand, 400 yards long, is about 2 miles south of the town being protected on the north by the "Long Rock" and on the south by a miniature headland. Entrance is at Smith's, Dunbur; admission is 2d and cars 1/.

Amenities on the Murrough include 12 shelters, 6 ladies and 6 gents lavatories and a number of wooden and concrete seats; now boats are available on hire.

Both strands are noted for safety and cleanliness and there are no restrictions governing mixed bathing.

Public right of way to beach or swimming places? YES

Bathing, swimming and diving facilities. State if mixed bathing allowed, and quote bye-laws (if any) relating to bathing places. Include swimming pools, bathing boxes, surf-riding, etc.

NO RESTRICTIONS

Shelters? 12 Lavatories? 6 ladies/6 gents Seats? Many concrete & wooden seats

Parking place for cars? Ample room on Murrough Charge? No Charge

Life-saving corps? NO Beach Attendant? NO

Swimming Club? NO Secretary NO

Sea Water Baths? NO Proprietor NO

Boats (type) available for pleasure trips? ROWING BOATS

Amusements Park and games provided;

The Murrough; Hurling, Football and Camogie pitches

Dance Halls and names of Proprietors;

<u>Royal Pavilion, Sea Front</u>	<u>Proprietor</u>	<u>Mr. Bart. O'Toole</u>
<u>Church of Ireland Assembly Hall</u>	<u>do.</u>	<u>Sec. Mr. Malone,</u>
<u>(periodically)</u>	<u>do.</u>	<u>Leitrim Place</u>



Skating Rink? \_\_\_\_\_ Proprietor \_\_\_\_\_

Is there a Town Hall? YES Location EAST END OF TOWN

Parks, Gardens and Recreation Grounds; Brief description;

THE MURROUGH; a 5-mile long level promontory, 400 yards wide, which runs north-  
ward from the town and divides the narrow creek from the sea. Hurling, football  
and camogie grounds are laid out and there is ample space for other forms of  
recreation.

Brief comments  
on water supply and sewerage;

Excellent water supply and sewerage system.

PUBLIC SERVICES

Nearest station Wicklow Distance ½ mile Bus Service Dublin/Wicklow

Public lighting by - electricity? E.S.B. Gas? \_\_\_\_\_

CINEMAS AND THEATRES

Cinemas Abbey Cinema Pictures shown 7 days weekly, Mat. Thurs & Sun.

Rialto

Theatre Rialto Kinds of show Occasional Variety, etc.

LIBRARIES

Public Library \_\_\_\_\_ County Library \_\_\_\_\_

Private Lending Libraries Nassau Library, Main St.,

Foyles Circulating Library, Agent;- Mr. J.J. Tallon

CHURCHES AND SERVICES

Church R.C. St. Patricks Services (Sundays) 8, 10 & 11.30a.m.

C.I. Wicklow Parish Church 11.30a.m. & 7.30p.m.

Methodist 12 noon & 7p.m.

R.C. St. Josephs (Rathnew) 8a.m. & 11p.m.

C.I. Rathnew 4p.m.



POSTAL FACILITIESLocation of Post Office Main StreetBusiness? (M.O. Telegraph, Telephone) M.O. Telegraph, TelephoneBANKINGBanks Royal Bank of IrelandNational BankHibernian BankSPORTS AND PHOTO SUPPLIES, ETC.Sports Dealers J.P. Hopkins & Sons, General Sports DealersPhotographic Stores Costello's Pharmacy, Butler's Medical Hall,Robert Lee, Chemist, Main StreetSOCIAL CLUBS, CULTURAL SOCIETIES, ETCSocial Clubs Catholic ClubCultural Societies Ancient Monuments Committee,Hon. Sec. John McGrath, Sol. Town ClerkINDUSTRIES AND HANDCRAFTSIndustries Dublin and Wicklow Manure Co.D.H. Haskins & Sons, Hake Meal MillersHandcrafts or Cottage Industries (Give names of craftsmen, employer, etc.);  
PUBLIC MONUMENTS

(Brief description; inscription to be quoted)

Billy Byrne Memorial (1798)Capt. Halpin; Obelisk



IMPORTANT PUBLIC BUILDINGS

(Give brief notes on architectural features)

Dominican Convent, established in 1870. From a roomy house on Kilmantain Hill  
this establishment has developed into the modern £40,000 building. Recently  
the nuns have added a concert hall costing £12,000.

SCHOOLS AND COLLEGES

De La Salle College. Primary and Secondary. Wentworth Place.

Dominican Convent. Day and Boarding School.

Wicklow Vocational School.

C. I. National School, Church Hill.

R. C. National School, St. Patrick's Road (De La Salle)

HOSPITALS

County Hospital

County Fever Hospital

FAIRS AND MARKETS; Half-Holiday

Monthly Fairs and Markets Last Tuesday of each month

Weekly market day Wednesday Half-holiday Thursday

GARAGES AND PETROL STATIONS

Cole, Byrne and Hopkins

Stevens Garage

Art. Haddon's, Bolarney (3/4 mile)

Conveyances for Hire (Owners);

TAXIS; Frank Murphy (Fitzwilliam Sq.)

Joe Carr, Main Street

Mrs. Murray, Main Street

Motors (touring); AS ABOVE



Boats (State type) Row Boats

Bicycles M.B. Murray, Main Street

John Smith, Church Street

Caravans \_\_\_\_\_

Horses \_\_\_\_\_

CAMPING SITES

Location THE MURROUGH Landowners U.D.C.

\_\_\_\_\_ 5/= per night by arrangement  
with Town Clerk

SILVER STRAND (2 miles) 3/6 (weekly) \_\_\_\_\_

Huts to let 25/= Weekly Mr. James Smith, Silver Strand

The Glen Strand, 2/6 Weekly Phil Keogh, Dunbur, Wicklow

Local Improvements Committee U.D.C.

Secretary John McGrath, Solr, Town Clerk



I . T . A . TOPOGRAPHICAL AND GENERAL  
SURVEY

AMENITIES AND GENERAL INFORMATION.

TOWNS AND VILLAGES (OTHER THAN SEASIDE)

Barony Of NEWCASTLE

TOWN OR VILLAGE Rathnew PARISH Wicklow COUNTY Wicklow

Location and Brief Description; Population; 547

Rathnew Village is at the fork of the main Dublin-Wicklow, Dublin-Wexford roads.

The original thatched-cottage village which existed for over a century and a half  
has been replaced by one of model modern cottages with electric light and water.

It was the first rural town-planning scheme of its kind in Eire.

Distances; Dublin 29 Miles, Wicklow 1.75 Miles

Is there a Town Hall? YES Location CENTRE OF VILLAGE

Parks, Gardens and Recreation Grounds. Brief Description.

Brief comments on water supply and sewerage;

Water and sewerage has been recently laid on by the Board of Health, and is in good  
condition.

PUBLIC SERVICES

Nearest Station Rathnew Distance 200 yds. Bus DUBLIN, WEXFORD, WICKLOW

Public Lighting by - Electricity,? YES Gas? NO

DANCING

DANCE HALL? YES Proprietor Mrs. Acton



CINEMAS AND THEATRES;

Theatre; Periodically at Dance Hall Kinds of Shows; Various

LIBRARIES

Public Libraries \_\_\_\_\_  
Private Lending Libraries \_\_\_\_\_

CHURCHES AND SERVICES

Church R. Catholic Services (Sundays) 8a.m. and 11a.m.  
Church of Ireland 4p.m.

POSTAL FACILITIES

Location of Post Office Central (In Village)  
Business (? Money Order, Telegraph, Telephone) M.O., Telephone, Telegraph

BANKING

Banks \_\_\_\_\_

SPORTS AND PHOTO SUPPLIES

Sports Dealers \_\_\_\_\_

Photographic Stores \_\_\_\_\_

SWIMMING POOLS AND BATHS

Swimming Pool? \_\_\_\_\_ Location \_\_\_\_\_

Public Baths? \_\_\_\_\_ Location \_\_\_\_\_

SOCIAL CLUBS, CULTURAL SOCIETIES, ETC.

Social Clubs \_\_\_\_\_

Cultural Societies Technical Cookery Classes Held In Hall



INDUSTRIES AND HANDCRAFTS

Industries \_\_\_\_\_

Handcrafts or Cottage Industries (Give names of craftsmen, employer, etc.);

\_\_\_\_\_

PUBLIC MONUMENTS

(Brief description; inscription to be quoted)

\_\_\_\_\_

IMPORTANT PUBLIC BUILDINGS

(Give brief notes on architectural features)

\_\_\_\_\_

SCHOOLS AND COLLEGES

NATIONAL SCHOOL; Boys and Girls

\_\_\_\_\_

HOSPITALS

\_\_\_\_\_

FAIRS AND MARKETS; Half-Holiday

Monthly fairs and markets \_\_\_\_\_

Weekly market day \_\_\_\_\_ Half-holiday \_\_\_\_\_ Thursday \_\_\_\_\_

GARAGES AND PETROL STATIONS

Mulvihill's Garage

\_\_\_\_\_

CONVEYANCES FOR HIRE (OWNERS);

Taxis \_\_\_\_\_

Motors (Touring) \_\_\_\_\_

Boats (State Type) \_\_\_\_\_

Bicycles; Mulvihill's Garage \_\_\_\_\_

Caravans \_\_\_\_\_

Horses and Hacks; Pat Doyle and John Behan \_\_\_\_\_

CAMPING SITES;

(At principal holiday resorts)

\_\_\_\_\_







ACCOMMODATION AND CATERING

Barony Newcastle

Village RATHNEW Parish WICKLOW County WICKLOW

BOARDING HOUSES;

Mrs. Tyndall,  
Mrs. Ellis,  
Mrs. Cullen,  
Mrs. Smullen,  
Mrs. M. Doyle,  
Miss Franey

BALLYBEG RATHNEW



*In S. Mel.*

18

# I.T.A. TOPOGRAPHICAL AND GENERAL SURVEY

## NATURAL FEATURES, ANTIQUITIES, HISTORIC ASSOCIATIONS, ETC.

BARONY OF ARKLOW.

TOWN OR VILLAGE Wicklow. PARISH Wicklow COUNTY Wicklow.

### TOPOGRAPHY

Brief description of outstanding scenic views in the district, natural attractions, or unusual topographical features.

At the foot of Ballyguile Hill, Wicklow, the County town commands magnificent views of sea, land & mountain. It has a beautiful bay extending eight miles from Six Mile Cross to Wicklow Head, and it has been compared to the Bay of Naples. It is remarkable that on clear summer mornings, the peak of Snowdon, in Wales is clearly visible to the naked eye. The Irish name is Cil Maccain - from the church founded there by St. Manán shortly after St. Patrick's arrival in 432 A.D.

### GEOLOGY

Brief notes on unusual geological features, such as caves, eskers, etc.

*Antares  
ch  
also*

*See Supplementary  
Sheets*

### MANSIONS, CASTLES AND ESTATES

OF IMPOSING CHARACTER

Location and brief description. Owner. Past associations. Libraries or art collections?  
Gardens? Open to visitors? Admission charge?



## ANTIQUITIES

Abbeys, Castles, Fortresses, Round Towers, Early Churches, Sculptured Crosses, Stone Circles, Ogham Stones, Cairns, Souterrams, Pillar Stones, Cromlechs, Forts, Rathes, Moats, Tumuli or ancient monuments of any kind. Exact location of each with short description, noting condition, etc. Relate local legend or tradition associated with building or object. State if in charge of Office of Public Works. Right of way to public? Admission charge (if any). Name and address of caretaker, or where key is kept.

THE ABBEY. [ See Archdeacon Booke - "Gleanings from the Past." ]

This venerable enclosure contains the ruins of a Franciscan Priory dating to Henry III (1216-1272), and founded by the O'Byrnes & O'Tooles. After many vicissitudes by the courtesy of the Fitzwilliam family, the house is now occupied by the Parish Priest of Wicklow.

There is an interesting story told of how this came about. About towards the end of the 18<sup>th</sup> century the Parish Priest was a Father O'Toole who resided in a humble cottage by the roadside at Ashford. The Earl of Fitzwilliam was in the vicinity collecting rents, and called to the cottage for a drink. When he made ~~himself~~ known to the priest, they discovered that some years before, at Salamanca, Fr. O'Toole had succoured the Earl - then a wounded soldier. In gratitude he gave the Abbey House to the Priests of Wicklow.

THE BLACK CASTLE. Founded by the Danes. The fortress was built by Maurice Fitzgerald & from the time of his death in 1178 - until the 17<sup>th</sup> century it was the scene of innumerable battles and much bloodshed. It is now a battered ruin.

See p 1

Also C. I. Parish Church

See Supplementary Sheet and Sheet 11

(Plain sheets of foolscap paper to be used, if necessary, for recording additional information).

\* "Gleanings from the Past" by Henry Bourke M.A. late Archdeacon of Glendaloch. Published by William Hague, 1895.



## Topography (cont'd).

Several ~~x~~ Between the hills, ~~several~~ mountain hollows and glens have been scooped by nature. Romantic hollows and glens have been scooped by nature from between the hills and mountains and some of these are prettily watered by ~~the~~ mountain ~~streams~~ streams.

Northwards from Wicklow extends the Morrough, a level stretch of sandy sward - 5 mls. in length. The Morrough separates the narrow creek, which receives the ~~waters~~ River Vartry, from the sea and is, in fact, a slender promontory, being washed on the east side by the waters of St. George's Channel. There is a fine public promenade and, in addition to many beautiful walks in the neighbourhood, there are ample facilities for more robust recreation in the form of hurling, football, bathing, etc.

Wicklow is  $30\frac{3}{4}$  miles from Dublin and  $18\frac{1}{2}$  m. from Bray.

## Geology.

Lower Silurian rock predominates in the geological composition of this area, and there ~~is~~ <sup>are</sup> also tracts of light sandy soil. ~~and~~ Generally the land is fertile but there is ~~much~~ <sup>some</sup> waste land in the mountainous regions to the ~~west~~ south and southwest of the town.

The unceasing action of the waves has ~~been~~ greatly undermined Wicklow Head, ~~causing~~ creating several large caverns which are sometimes frequented by seals.



Parish — Wicklow.

John A.

Topography.

Of eight miles long sweep of sea-shore, most of which is gently-sloping sandy or pebbly beach; ~~the~~ and to

Further eastern boundary of this area, are <sup>both</sup> glens, wild and Sea, strand and headland, rugged mountain, wild and verdant ~~glens~~, <sup>and</sup> rich pasture, <sup>and</sup> woodland, ~~and~~ <sup>near</sup> ~~some~~ <sup>strip</sup> of level sandy <sup>picturesque</sup> make up the physical attractions of this district.

Glens and hollows of —

Sea, Strand and headland, Rugged mountain, glens and hollow, and Rich Pasture and woodland make up the Physical attractions of this Picturesque district.

From the town, and particularly from the Rugged eminences in the background, some very remarkable seascapes are presented on a clear day. These include some far-reaching views of St. Georges Channel and, on the opposite side, the mountains of Wales — Snowdon being easily discernible ~~on~~ with the naked eye.

The strand, a <sup>series of</sup> gently-sloping sandy <sup>and</sup> pebbly beaches, extends for several miles to the north of Wicklow, and, on the southern side, includes the celebrated Silver Strand and other ideal bathing covers.

Wicklow Head is a rugged, boldly projecting promontory on the steep cliffs of which are three lighthouses, one now derelict, another operative, and the third, in normal times, equipped as a holiday hostel by Air Oige. From these bold cliffs a splendid view extends northward to Howth.

P.T.O.



Franciscan Abbey

In the grounds attached to the residence of the parish priest, the <sup>entire</sup> ruins of this venerable establishment, now greatly reduced. The <sup>Convent</sup> Abbey was founded by the O'Byrnes and O'Dooles, Irish chieftains of Wicklow, during the reign of Henry III (1216-1272).

Black Castle.

Maunice Fitz Gerald came to Ireland with the Anglo-Norman invaders in 1169 and took a leading part in their activities in this country. Receiving <sup>(in 1176)</sup> a large grant of property in Leinster, <sup>from Strangbow,</sup> he commenced the building of a new castle at Wicklow, but his death in 1177 delayed the completion of the project. His sons were cunningly dispossessed by William Fitz-Aldelm ~~but the cast~~ who <sup>was</sup> did not allowed to enjoy his spoils for very long as his weakness and questionable practices led to his being recalled to England in 1179. The Irish burned the town in 1301, and in 1375 the castle was strengthened by William Fitz-William whose descendants retained the Constablership for several generations. ~~The castle~~ <sup>and occupied</sup> The castle was frequently attacked by the Irish and in the early 6<sup>th</sup> century the O'Byrnes captured it, <sup>and held it for some time.</sup> but it <sup>was</sup> surrendered <sup>with</sup> to Henry VIII in 1543. Luke O'Doole invested the fortress in 1641, but on the approach of Sir Charles Coote's army, was forced to raise the siege.

The ruin, which now <sup>promontory</sup> consists merely of the fragments of the ancient walls, stands on a rocky projection overhanging the sea near the eastern extremity of the town. It is known as the Black Castle and the masonry is exceptionally durable. The earlier fortress which stood on this site was, apparently, erected by the Danes.



Antiquities.

Wicklow Parish.

Form A.

Church of Ireland

Parish Church.

The baptismal record of this establishment dates back to 1655 and several tombstones in the adjoining burial ground date to 1600 A.D. The actual age of the present building is doubtful but the church is remarkable mainly for the Norman Doorway in the South porch. This is a rare piece of stonework and is much admired by visitors. The stone font is also of great age. A slab bearing a Masonic Symbol may be seen at the south east end of the church. This remained unnoticed until the building was renovated in 1912 and its origin is unknown.

Gravediggers, at work in the burial ground at the start of this century, came upon the stout walls of an early building. The stone masonry was found to be identical with that of the old Franciscan convent, having the same rubble-mortar grouting.

The Mace. This is now in the possession of the U.D.C. and is

preserved in the Town Hall. The corporation of Wicklow was first constituted by a charter of James I and consisted of a portreeve and 12 burgesses who were presented with the Mace.

Now valued at £5,000 or more, it is of unique design and similar to that of the Dublin Corporation.



Patriot's

The Goal, situated on Kilmantain Hill is now closed. It has housed many Irish rebels, including Billy Byrne <sup>the</sup> leader of 1798. During comparatively recent times it was ~~the~~ a place of detention under the Provisional Government, and <sup>here was</sup> ~~had~~ the distinction of housing Brokine Childers (of "Riddle of the Sands" fame) after his arrest in Glendalough House, Anamoe. in 1922. Childers was executed in Dublin later. In olden times, public executions used <sup>to</sup> take place from the large door at the top of the building - it is said that one person was hanged for the theft of a sheep.

The Court House nearby, was the scene of many dramatic trials during the Land War, and Parnell's agitation.

C.I. PARISH CHURCH. History tells of the "little Church by the River," but whether it refers to the present Protestant Church, or to one somewhere in the vicinity is a matter ~~on~~ which opinions differ. In the early part of this century, a grave was being dug near that of the famous Billy Byrne of Ballymanus, and thick walls of what appeared to be a church were disclosed. On examination, the stones were found to be identical with those found in the ruins of the Franciscan Abbey, with the same noble mortar grouting. It may be assumed that the OByrnes built this church from the ruins of the Abbey, and had interred their dead within the walls.

Arch. quibbles

It is impossible to fix <sup>on what</sup> the date ~~when~~ the present church was built. It is believed that <sup>where</sup> a church of St Thomas ~~was~~ which was in the centre of the churchyard - was demolished, another church was erected, which may have been the "Church of the Vine," mentioned in old records. This must have been quite close, as the adjacent banks are called the "Vineyard Banks." And again the stones bear similarity.

The Baptist records date back to 29.3.1655, and several tombs date to A.D. 1600.

The NORMAN ARCH in the <sup>South</sup> doorway <sup>is</sup> a rare piece of stonework, <sup>that has been taken from an other building</sup> and the local antiquarians are very much interested. The stone <sup>is</sup> found in the main entrance <sup>is</sup> so old that <sup>it is impossible to determine its exact age.</sup> <sup>it is impossible to fix the date when it was first used.</sup>

"Rocky Road," scene of the execution of Billy Byrne is now known as Gallows Lane. Here a cart was drawn up & weighted & its shaft fitted as a gallows. Byrne's friend Murphy was seized, fast to the rope & compelled to pull on it till Byrne was dead. This was near the newly built cottage at the Friar's Hill side of Gallows Lane.



The Murrrough. Famous all over Ireland. A narrow strip of flat land 5 miles long and 400 yards wide separates the sea from the river Liffey. Derived from muir - the sea + rough, a plain. Some believe that Prince Murrrough, son of King Brian had something to do with the name, others ascribe it to Dermott. Mc Murrrough, King of Leinster, who brought Strongbow to Ireland. He certainly held sway over the district. It is now a magnificent promenade, much used by the inhabitants and visitors in summer.

*[Faint, illegible handwriting covering the majority of the page, likely bleed-through from the reverse side.]*

68.1.42

*[Signature]*



Historic Sites

Prior to the arrival of the Anglo-Norman invasion of 1169, Licklow is believed to have been held by the Danes and to have been one of their principal east coast maritime stations - being called by them "Ligginge Laugh" (The Lake of Ships).  
Vikings - Lo

Strangbow It was included in the large grants made by Strongbow to Maurice Fitzgerald who fortified the place against the frequent predatory raids of the Irish chieftains, O'Byrnes and O'Dooler. The O'Byrnes captured the town in the 16<sup>th</sup> Cent. but surrendered it to ~~John~~ Henry VIII in 1543. Luke O'Dooler laid siege to it in 1641 but, on being advised of the approach of a strong force of the English under Sir Charles Coote, he was obliged to withdraw.

Coote entered the town and perpetrated a most ghastly atrocity in the indiscriminate massacre of the inhabitants. It is related that ~~that~~ a great many of the townspeople had assembled in the church for Mass on hearing of the approach of the English. Coote ordered the church doors to be fastened and then had the building set ablaze - those trying to escape from the inferno were <sup>brutally</sup> butchered. Blood ran down the hillside which has consequently named, <sup>and is still called</sup> "Melancholy Lane", ~~as the name by it is~~



Astoria Houses.

Wicklow Pl.

Form A.

Donnally House. (of Atlantic Cable fame)  
Captain Robert Halpin, lived for some time at this house which is two miles from Wicklow town, on the Rathnew road. It is now the residence of Miss Halpin, his daughter, who possesses several interesting relics associated with her father's most proud achievements. These include some sections of the original Atlantic cable, a huge working model of the "Great Eastern" which was courteously loaned to the Chicago Exhibition some years ago - being insured for a large sum, and a number of interesting prints of sailing ships which ~~are~~ are eagerly sought after by the British Naval authorities for their Museum.

The house is not open to casual visitors but Miss Halpin is always pleased to exhibit the souvenirs to those interested parties.

Capt. Halpin died at Donnally in 1894. He had been born <sup>in 1836,</sup> in a house which stood adjacent to the stone bridge over the Feitrim River at Wicklow, ~~in 1836.~~

At the entrance to the farmyard at Donnally, an old ~~the~~ church bell hangs suspended from a wooden beam. The figures of a bishop with mitre and a Crucifix with a woman at the foot and the Virgin and Child are represented

and the <sup>following</sup> inscription has been chiselled out:— "L'AN 1771. I AT ETE. FAIT PAR HEBAN LE FLIS ET PAR HERBA LE

FLIS. TTE PESSE 248 I EYESSE 288 EN TOUT.

("Year 1771. I have been made by Heban the Son and by Herba the son. I weigh 248 lbs. in all. I weigh 288 lbs. in all.")



CURIOSITIES

Curious objects, structures, monuments, landmarks, sights, etc. For example, Wishing stones or "chairs," freaks of nature (i.e. grotesque rock formations)—in fact, any scene or object which may be regarded as queer, quaint or mirth-provoking. Location and description. Any story or legend to be related.

There is a SLAB, WITH A MASONIC SYMBOL on the S. east end of Wicklow C.I. Parish Church. This remained unnoticed until the building was renovated in 1912, and its origin is unknown.

There was a Stone Gargoyle on the west corner of the South wall, but this was defaced by workmen during repairs in 1878.

The TREES in Abbey St. on the side of the road are interesting. When the railway was continued & the present station built, the grand Jury wished to cut a road through the Abbey grounds, to shorten the road to the Court. The P.P. of that time refused, but after persuasion allowed them to widen the road & take in some of the Abbey grounds. The trees were left, after the road was widened.

CHURCH BELL at Dinnakilly House, at entrance to farmyard.

INSCRIPTION LAN. 1771. I. AT. ETE. FAT. PAR. HERBAN. LE. FLIS ET. PAR. HERBA. LE. FLIS. TTE PESSE 248 (cut with chisel) + EYESSE 288 EN TOUT. (cut in wood suspending bell.

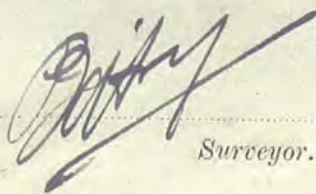
Jiquis, Bishop with mitre & crosier, with woman at foot. Virgin & Child. TRANS. Year 1771. I have been made by Heban the son & by Herba the son. I weigh 248 lbs. I weigh 288 lbs in all.

CUSTOMS, PATTERNS, ETC.

Brief account of old customs, traditional cures, etc., still practised in the district. Pilgrimages to Holy Wells, Shrines, etc. Patterns.

On Bude's Head, near Wicklow, is a well, reputed to have <sup>extraordinary</sup> magic qualities. It is said that if a girl kneels & drinks from it, she will be married within the year. There is a disused sunetalm which was once the throne of St. Bude. local fishermen used to pray before going salmon-fishing.

(Signed)



Surveyor.

DATE

OCT. 1. 42.



Barony Wicklow, Town Wicklow Parish Wicklow

Town Hall - houses the MACE. This Mace is of

great interest. It was presented with a charter to the Portreives + Burgesses of the town, - who are now known as the Urban District Council. There is only one other Mace in Ireland of similar design - that in possession of the Dublin Corporation. Both Maces <sup>were</sup> presented at the same time.

The reason for this presentation to Wicklow was, that James I also presented the town with an estate - the corporate estate. The Mace was to be placed on the Council table during meetings, <sup>in order</sup> to render them legal. It is valued at about £5,000, + is probably worth more.

607.42

*[Signature]*



Memorials. In Market Square is a life size figure of the famous 1798 leader, Billy Byrne, who was executed from a tree in Gallows Lane, near Abbey Street, and buried at Church Hill Cemetery, Wicklow. The figure is on a granite pedestal, and carries a pike.

Surrounding the pedestal are three Marble plaques.

RIGHT. LEFT. Back.  
 W. M. Byrne. Holt. Dwyer.

On the front of the pedestal is a design with a Celtic Cross with, maid and a wolfhound are depicted, and Holt, Michael Dwyer and W. M. Byrne are represented on each of the other sides. The marble plaques inscription is as follows.

Front and one side in Irish, translated on back and other side as follows.  
 "This monument has been erected by the people of Wicklow county to commemorate the heroism and sacrifices of

William ("Billy") Byrne, Michael Dwyer, Joseph Holt, William Michael Byrne, and the other Wicklow men who participated in the struggle for their country's freedom in the revolutionary movements of 1798, 1803, 1848, 1867.  
 God Save Ireland."

(Billy Byrne was buried at Church Hill Cemetery, Wicklow).

- 2
- |          |             |              |                      |
|----------|-------------|--------------|----------------------|
| ARKLOW.  | BALLYELLIS. | BALTINGLASS. | CARRIG.              |
| DONARD.  | DUNLAVIN.   | GLENDALOGH.  | GLANHALLOCK.         |
| INCH.    | KILBEGAN.   | LUGGELAW.    | MT. PLEASANT.        |
| NEWTOWN. | RATHORUM.   | REDNA.       | STRATFORD ON SLANEY. |

The front and one side bear a Gaelic inscription which is translated in English on the other sides as follows:-

Oct. 1. 42

*[Signature]*



MEMORIALS. In Fitzwilliam Square, is an obelisk of polished Irish granite, erected by public subscription, in memory of the late Capt. Robert C. Halpin D.D., who <sup>won fame</sup> was famous as the commander of the "Great Eastern", <sup>from</sup> which the Atlantic ~~and many~~ <sup>trans-oceanic</sup> other cables were laid. He was born at the

Included in that house etc.

Bridge, adjacent to the stone bridge over the Leitrim - and resided at Dinnakilly House, two miles from the town, on the Rathnew Road. and died there in 1894. His remains are interred in Church Hill cemetery.

Dinnakilly house is now the residence of his daughter, who has many interesting relics belonging to the captain, including sections of the original Atlantic cable - prints, etc of sailing ships, which the British Naval Authorities are very anxious to procure for their Museum. As well, there is a huge working model of the "Great Eastern" which was ~~sent~~ <sup>sent</sup> ~~to~~ <sup>sent</sup> ~~courteously~~ <sup>courteously</sup> sent to the Chicago Exhibition, and which is insured for £500.

The house is not open to tourists but Miss Halpin will always be pleased to show these souvenirs to people who are interested in telegraphic & marine history

Inscriptions on Obelisk.

<u>FRONT.</u>	<u>BACK.</u>	<u>LEFT</u>	<u>RIGHT.</u>
ROBERT HALPIN BORN 16 <sup>th</sup> FEB. 1836 AT WICKLOW. DIED 20 <sup>th</sup> JAN. 1894 AT DINNAKILLY HOUSE CIV. EMERITO, CIVITAS SENTRIX.	THIS MONUMENT IS ERECTED BY THE FRIENDS & FELLOW TOWNSMEN OF CAPTAIN R.C. HALPIN IN TESTIMONY OF HIS MANY ESTIMABLE QUALITIES, AND IN PROUD REMEMBRANCE OF THE DISTINGUISHED SERVICES HE RENDERED TELEGRAPHY IN ALL PARTS OF THE WORLD.	CAPTAIN R.C. HALPIN J.P., D.L. COMMANDER R.N. RESERVE MARINE SUPERINTENDENT TELEGRAPH CONSTRUCTION AND MAINTENANCE CO. LTD. NAUTICAL ASSessor HIGH COURT OF JUDICARE. MEMBER LOCAL MARINE BOARD PORT OF LONDON JUNIOR BROTHER. TRINITY CORPORATION	1866. FIRST SUCCESSFUL CABLE ACROSS ATLANTIC. 1869 FRENCH ATLANTIC CABLE - LONGEST IN THE WORLD. 1870 SUZ TO BOMBAY. MADRAS TO JAVA. 1871 JAVA TO AUSTRALIA 1874 MADRAS TO PERNAMBUCCO AND OTHERS. TOTAL. 23,000 MILES.

Oct. 1. 42

*[Signature]*



★ SERVICE

★ PLEASURE

★ COMFORT

# MAGHERYMORE HOUSE

## WICKLOW



MAGHERYMORE HOUSE

Situated at the seacoast in one of the most lovely parts of Co. Wicklow, mid-way between the well-known Silver Strand and Brittas Bay, this ideal Holiday Hotel is within one hour's run of Dublin.

Standing in its own beautiful grounds of over 500 acres, Magherymore offers every conceivable amenity to those who desire a really happy, restful and carefree Holiday in perfect surroundings.





Above—THE GRAND STAIRCASE

### THE MANSION HOUSE

is a beautifully appointed residence, and contains spacious reception rooms, library, dining-room, billiardroom, ping-pong and darts room. There is an all-electric Radio-Gram installed for the benefit of the guests. Periodical Dances are arranged. The many single and double bedrooms are large and sunny, overlooking the sea and the Wicklow mountains.

The whole mansion is most comfortably and tastefully furnished, and dispenses a most restful, and at the same time cheery atmosphere. Unlimited hot water is always available for baths, etc.

## MAXIMUM SUNSHINE—MINIMUM HUMIDITY

The cuisine is renowned for its varied and excellent food. The extensive kitchen gardens, dairy and poultry farm provide guests with an abundance of fresh produce at all times. LIGHTING throughout is electric, from the Shannon Scheme.

### SPORT.

Shooting is available to guests over the entire property. Trout fishing is also to be had in Three-Mile Water River which bounds



A CORNER OF THE BILLIARD ROOM

the Estate on one side. Sea-fishing may be indulged in from the rocks on 2 miles of sea coast, where good catches of bass and rock-salmon are often obtained. Horses and ponies can be obtained for both Riding and Driving.

### GOLF.

There are excellent courses at Wicklow and Woodenbridge, both within easy distance.

### TERMS.

Terms are entirely inclusive except for private laundry, and the use of a car for which a small

charge is made. Intending guests are cordially invited to call and inspect the amenities of Magherymore at any time, **and trains or buses can be met at Wicklow Town by arrangement.**

No effort is spared to ensure the comfort and enjoyment of guests, and the creation of a really home-like atmosphere without any restrictions. The management sincerely hope that they may have the pleasure of welcoming you at Magherymore and including you amongst their very many good friends and patrons.

PROPRIETOR: J. L. Leslie-Ellis.

Below—THE LOUNGE HALL







*Above*—THE BATHING STRAND

### THE BEACHES

which are entirely private, are situated within a few minutes' walk of the House, and are reached by a convenient tree-lined pathway. The bathing is considered the safest and best on the coast, and the beaches, which are of pure silver sand, are entirely sheltered on three sides.

### THE GROUNDS

which are laid out under ideal conditions, contain many rare and beautiful trees and shrubs. The tennis and croquet lawns, in their sheltered positions, are very popular retreats in the spring and summer months as is also the 9-hole putting course.

*Below*—A CORNER IN THE EXTENSIVE GARDENS





# I.T.A. TOPOGRAPHICAL AND GENERAL SURVEY

## SPORTS AND GAMES

BARONY OF ARTLOW.

TOWN OR VILLAGE WICKLOW. PARISH WICKLOW. COUNTY WICKLOW.

### ANGLING (Fresh water)

If there is only one river or lake in the parish this form (B) will suffice. For additional waters Form Ba to be used.

RIVER OR LAKE VARTRY Nearest point to town (distance) 2 mls.

#### KINDS OF FISH HELD:

Small Brown Trout, some Sea Trout and an occasional Salmon.

#### AVERAGE WEIGHT OF:

Salmon ..... Sea trout ..... Brown trout 1/4 lb.

#### BEST SEASONS FOR:

Salmon ..... Sea trout ..... Brown trout Small Brown Trout  
*At several smaller lakes and streams near the town hold numerous*

#### SUITABLE FLIES:

Salmon .....  
Sea trout .....  
Brown trout .....

State if angling is—"entirely free"; "free except on preserved stretches"; etc.

Preserved stretches, with names and addresses of Proprietors:

#### Owners of boats for hire, and charges per day:

Wm. Phillips, Castle St.  
Michael Byrne, Bond St.  
J. Robinet, The Mall.  
Geo. Tolles, Sth. Quay.  
} boatmen are not agreeable to state charges per day.

Convenient angling centres (where accommodation is available):

Ashford, Wicklow.

Local Angling Club ..... Membership Fee .....

Secretary (and Address) .....

*Please copy notes re Angling (pencil notes)*



SEA ANGLING

Brief notes on fishing grounds :

Net.

There is fair sea fishing along the coast from Wicklow Head southwards.

ANGLING (fresh water)

Kinds of fish to be caught :

~~July & Aug. Trawl for mackerel.~~  
~~Sept. onwards. net for herrings.~~

Mackerel + Bass.

Owners of boats, type of boats, and charges per day :

See previous page.

Bait available locally? <sup>Yes.</sup> ~~Contact Local Boatmen.~~ Fishing tackle? J.P. Hopkins & Son Ltd

Representative of B.S.A.S. or other sea angling Assn.

GOLFING

Name of Club Wicklow Golf Club, No. of holes 9.

Situation and brief description of course :

On the cliffs south of the Town, one of the best along the East Coast. Magnificent views from Pavilion. Natural Bunkers, well kept Greens. All year round play.

Name of Professional \_\_\_\_\_

Is there a clubhouse on course? Yes. Licensed? Yes.

Green fees (Visitors) : Per day 2/- Per week 8/- Monthly 1-00

~~Sunday Play.~~ Hon Sec. G. Walsh.  
The Bungalow.  
Summer Hill Wicklow



**RACING**

(Including "Point-to-Point" and "Flapper" meetings)

No. of meetings normally held during the year.....

Under which rules?.....

Situation of course.....

**HUNTING**

Hounds which hunt in the district :

Foxhounds.....

Harriers..... *Bray Harriers*

Beagles.....

**COURSING**

Name of Club..... Meeting held annually?.....

**GREYHOUND RACING**

Name of Company.....

Races on (nights).....

**SHOOTING**

Brief notes on shooting areas, stating kinds of wild fowl or game, and if free shooting is available :

*Pheasant, ~~go~~ woodcock and partridge etc are fairly plentiful in parts but*

If preserved, give names of landowners or lessees and addresses :

*Local Farmers <sup>preserve</sup> control shooting, & lease to Syndicates ~~etc~~ and others.*

Shooting Club..... Secy.....

**CLAY PIGEON SHOOTING**

Name of Club..... Competitions held?.....

**ROWING AND SAILING**

Rowing or yacht clubs, with address of club-house.

.....  
.....  
.....



Wicklow G.A.A. Club - Hurling & Football. Sec: Mr Ned Kane.  
 Wicklow Canoe Club.  
 Foregoing games are played on the Marrough.

**GAMES AND RECREATIONS**

Name of Club or Committee concerned with the following:  
 (In each case give location of sports ground or recreation hall)

- Gaelic Football Wicklow G.A.A. Hon Sec. Ned Kane
- Hurling Wicklow Hurling Club / Canoe Club played on Marrough.
- Handball / Handball alley? /
- Soccer Wicklow Town United. Hon Sec. Owen Finlay.
- Rugby /
- Cricket /
- Hockey /
- Bowls /
- Bowling (on public roads) /
- Lawn Tennis Wicklow Lawn Tennis Club. Kinds of courts 5 grass.
- Croquet /
- Billiards Bridge Hotel, Catholic Club, Y.M.C.A. <sup>Hall</sup>, Garda Bks.
- Badminton <sup>C.I.</sup> Assembly Hall.
- Table Tennis /
- Bridge Club Wicklow Bridge Club. Hon Sec. S. Keogh. Hib. Bank.
- Other games or recreations (inc. "Cross Roads" dancing) /

**ATHLETICS AND CYCLING**

Name of Club / Events held under rules of /  
 do. /

**ANNUAL EVENTS**

Give list of annual events held in the town or parish, naming promoters (Clubs, etc.)  
 in each case. Include pilgrimages and patterns.

- Wicklow Regatta held Promoters Town Committee. Hon Sec. John O'Leary.
- annually on August Bank Holiday.
- Yacht Racing - large & small
- crusers, Motor <sup>boat</sup> & Rowing <sup>boat</sup> Races.
- cash prizes & valuable silver cups.
- Bands, bazaar shows, Hobby Horses
- side shows & fireworks.

DATE 6.7.42

(Signed) [Signature] Surveyor.



**I.T.A. TOPOGRAPHICAL AND GENERAL SURVEY**  
**HOLIDAY AMENITIES AND GENERAL INFORMATION.**  
**SEASIDE RESORTS.**

BARONY OF ARKLOW.

RESORT Wicklow. PARISH Wicklow COUNTY Wicklow 3,183.

Location and brief description of town or village. Population 3,183.

*See Supplementary page*  
<sup>3 1/2 miles S.W. of</sup>  
30 1/2 miles from Dublin, on sea coast, the town runs from East to West, & lies at the foot of Ballyquile Hill, & commands magnificent views of sea, lake & mountain.

Description of beach (? Length, sandy, shingle, safe, currents, &c.):

5 miles of sea-worn shingle - noted for its safety & cleanliness. The Promenade extends 1/2 mile from East pier, & is ~~being~~ <sup>being</sup> continually improved & extended by the Local Council.

Public right of way to beach or swimming places? Yes.

Bathing, swimming and diving facilities. State if mixed bathing allowed, and quote bye-laws (if any) relating to bathing places. Include swimming pools, bathing boxes, surf-riding, &c.

No Restrictions.

Shelters? 12. Lavatories? 6 ladies 6 gents. Seats? many concrete seats & wooden.

Parking place for cars? Ample room on Murrrough Charge? no charge.

Life-saving corps? No Beach attendant? No

Swimming Club? No Secretary? No

Sea water baths? No Proprietor? No

Boats (type) available for pleasure trips? Rowing boats.

Amusements Park and games provided:

The Murrrough. Hurling, Football & Camogie Pitches.

Dance Halls and names of Proprietors:

Royal Pavilions, Sea Front. Proprietor MR. Bart. O'Toole.  
C.I. Assembly Hall (periodically) do. Sec. MR. Malone, Leckins Place.  
 do. \_\_\_\_\_



Skating Rink? ..... Proprietor .....  
Is there a Town Hall? Yes. Location East End of Town.

Parks, Gardens and Recreation Grounds. Brief description: level promontory, The Marrough — a 5 miles long strip of level ground, 400 yards wide, which runs northward from the town and divides the narrow creek from the sea. Hurling, football and canoeing grounds are laid out and there is ample space for other forms of recreation.

Brief comments on water supply and sewerage: Excellent water supply + sewerage systems

**PUBLIC SERVICES**

Nearest station G.S.R. Wicklow Distance 1/2 mile Bus Service? G.S.R. Dublin/Wicklow  
Public lighting by—Electricity? E.S.B. Gas? Yes.

**CINEMAS AND THEATRES**

Cinemas Abbey Cinema Pictures shown 7 days w/ky -  
Rialto (nights) Mon. Thurs. & Sun.  
7 day. Mat. Sun.

Theatre Rialto. Kind of shows Occasional Variety, etc.  
(Drama, Comedy &c.)

**LIBRARIES**

Public Libraries County Library.  
Private Lending Libraries Nassau Lib., Main St  
J.P. Tallon's. Loyles agent. Circulating Library - agent. Mr J.J. Tallon.

**CHURCHES AND SERVICES**

Church R.C. St Patrick's. Services (Sundays) 8-10 + 11-30 AM.  
C.I. Wicklow Parish Church. 11-30 AM. 7.30 pm.  
Methodist 12. noon 7 pm.  
R.C. St Josephs. (Rathnew). 8 AM 11 AM.  
C.I. Rathnew. 4 pm.

**POSTAL FACILITIES**

Location of Post Office Central Phone 24 Hr. service  
Main Street.  
Business (? M.O. Telegraph, Telephone) General Business  
M.O., Telegraph, Telephone.

**BANKING**

Banks Royal Bank of Ireland.  
National Bank  
Mibernian Bank.

**SPORTS AND PHOTO SUPPLIES, &c.**

Sports Dealers J.P. Hopkins & Sons Ltd. Genl. sports dealers.  
Photographic Stores Costello's Pharmacy, Butler's Med. Hall.  
Robert Lee, Chemist, Main Street



Wicklow Parish

Wicklow — Description.

Pop. 3,183.

Being within easy reach of several celebrated beauty-spots, Wicklow is an convenient touring centre.

Wicklow, <sup>the County Town,</sup> town, from its healthy situation on the <sup>lower</sup> slopes of Gullygule hills overlooking the bay round which it stretches, has deservedly been lauded as a resort of enjoys an excellent reputation as a holiday resort. The quaint-looking old town of the narrow streets is gradually being transformed modernised and considerable improvements have been effected in recent years — yet the place has lost none of its dignified old-world individuality. It possesses a deep safe harbour with two promenade freshwaters and the splendid Promenade, which extends half a mile from the East Pier, is being continually improved and extended by the local authorities.

The main streets radiate from the central Fitzwilliam Square and, in the lower part of the town, the ~~little~~ Leikim River flows under a broad bridge.

under a wide bridge in the lower part of the town, and, after flowing through the long narrow creek which is shut off from the sea by the Morrough, discharges itself into St. George's Channel.

Distances: — Dublin, 30<sup>3</sup>/<sub>4</sub> m.; Bray, 18<sup>1</sup>/<sub>2</sub> m.

Description of Beach.

The Morrough, a narrow <sup>5 mile</sup> strip of commonage, now largely developed and devoted to playing grounds and public promenade, slopes gently to the sea on the east side and thus is formed a long stretch of strand that is alternately shingly and sandy according to the prevailing weather.

The famous "Silver Strand," a magnificent beach of fine silvery sand, <sup>400</sup> ~~400~~ yds. long, is about 2 mls. ~~to~~ s. of the town being protected on the n. by the "Long Rock" and on the s. by a miniature headland. Entrance is at Smith's, Number; admission 2<sup>d</sup>, Cars 1/6.

Amenities on the Morrough include 12 shelters, 6 ladies and 6 gents lavs. and a number of wooden and concrete seats; Row boats are available on hire.

Bathing is. Both strands are noted for safety and cleanliness and there are no restrictions governing mixed bathing.



Barony ARKLOW.

Parish Wicklow

County Wicklow

Beach. <sup>2 1/2</sup> miles from Wicklow is the famous "Silver Strand". This is a glorious beach of silver sand, 400 yards long, protected on the north by the "long rock," and on the south by a miniature headland. Bathing is perfectly safe, and there is a well of spring water on the cliffs.

Entrance at Smillas, Dunbar. Admission 2<sup>d</sup>. Cars, 1/-. Also by boat from the sea.

On the road to the <sup>Strand</sup> above, are the three lighthouses one of which is now used as a hostel by Sir Orge.

BOND  
SMILL BOOK

Oct. 7. 42

*[Signature]*



Important Public BuildingsThe Gaol

~~The now disused gaol on Kilnautan Hill has held many~~  
 many famous Irish patriots have languished within  
 this <sup>now disused,</sup> grim old building on Kilnautan Hill. Billy Byrne,  
 Insurgent leader of '98 was incarcerated here, as was  
 Erskine Childers, <sup>(author of "Riddle of the Sands"),</sup> during the conflict with the Provisional Government.  
 Byrne was executed at "Rocky Road", now known as Gallows Lane;  
 here, a cart was drawn up and weighted and its shafts fitted as  
 a gallows; <sup>his</sup> friend, Murphy, was seized, tied to the rope and  
 compelled to pull on it till Byrne was dead. This was near the newly-  
 built cottage at the Friar's Hill side of Gallows Lane. Childers was  
 executed at Beggars Bush Barracks, Dublin, in 1922.

In older times, public hangings were carried out from  
 the large doorway at the top of the gaol.

At the Courthouse, nearby, were ~~to~~ enacted ~~many~~ several  
 dramatic trials during the land war and Parnell's agitation.



Kalpin Monument

## Public Monuments.

(2) An obelisk of polished Irish granite in Fitzwilliam Square was erected by public subscription to commemorate Captain Robert C. Kalpin, D.L., who won fame as ~~the~~ <sup>other</sup> commander of the "Great Eastern" from which the Atlantic and <sup>other</sup> trans-oceanic cables were laid. The four sides of the monument are inscribed as follows:—

Front: "Robert Kalpin, Born 16<sup>th</sup> Dec. 1836 at Wicklow. Died 20<sup>th</sup> Jan. 1892 at Dinnahilly House. *Vivi Emerita Civitas Senatrix*".

Back: "This Monument is erected by the friends and fellow journeymen of Captain R.C. Kalpin in Testimony of his many ~~good~~ <sup>valuable</sup> Estimable Qualities, and in Proud Remembrance of the Distinguished Services he rendered Telegraphy in All Parts of the World."

Side: "Captain R.C. Kalpin, J.P., D.L., Commander R.N. Reserve. Marine Superintendent Telegraph Construction and Maintenance Co. Ltd., Nautical Assessor High Court of Judicature, Member Local Marine Board Port of London, Junior Brother Trinity Corporation."

Side: "1866: First Successful Cable across Atlantic. 1869: French Atlantic Cable, — longest in the world. 1870: Suez to Bombay, Madras to Java. 1871: Java to Australia. 1874: Madeira to Pernambuco and others. Total: 23,000 Miles."

Captain Kalpin was interred at Church Hill Cemetery, Wicklow.



Billy Byrne Memorial

In the Market Square, is a life size figure of Billy Byrne  
The Wicklowman's part in the '98 rising and ~~the~~ subsequent  
revolutionary movements is commemorated in a stone  
monument in the Market Square. A life size figure of Billy  
Byrne, holding a pike, stands on a granite pedestal and three  
marble plaques on the sides <sup>and back</sup> of the pedestal bear the names of three  
other well-known '98 leaders, W. M. Byrne, Holt and Swyer.  
On the front design shows a maid and wolfhound and a  
Celtic cross.

The inscription, <sup>in Gaelic and English,</sup> reads:-  
" This Monument has been erected by the people of  
Wicklow County to commemorate the heroism and sacrifice  
of  
William (Billy) Byrne, Michael Swyer, Joseph Holt,  
William Michael Byrne  
and the other Wicklow men who participated in the  
struggle for their Country's freedom in the revolutionary  
movements of 1798, 1803, 1848, 1867.

GOD SAVE IRELAND.



SOCIAL CLUBS, CULTURAL SOCIETIES, &c.

Social Clubs Catholic Club.

Cultural Societies Ancient Monuments Committee.  
Hon. Sec. John McGrath Solr. Down blent.

INDUSTRIES AND HANDCRAFTS

Industries Dublin & Wicklow Manure Co.  
D. H. Haskins & Sons. Flake Meal Millers.

Handcrafts or Cottage Industries (Give names of craftsmen, employer, &c.):

PUBLIC MONUMENTS

(Brief description; inscription to be quoted)

*Include loose pps*

Billy Byrne memorial (1798). see additional sheet  
Capt. Halpin. Obelisk.

*Include loose leaf (2)*

IMPORTANT PUBLIC BUILDINGS

(Give brief notes on architectural features)

Dominican convent, established in 1870.  
From a womy house on St. Michael's Hill  
this establishment has developed into the modern 40,000 X  
building. Recently the nuns have added  
a concert hall costing 12,000.

SCHOOLS AND COLLEGES

De la Salle college. Primary & Secondary. Bentworth Place  
Dominican convent. Day & Boarding School.  
Wicklow Vocational School.  
C. I. Nat. School. Church Hill.  
R. C. Nat. School. St. Patrick's Road. (De La Salle.)

HOSPITALS

County Hospital  
County Fever Hospital.



FAIRS AND MARKETS ; HALF-HOLIDAY

Monthly fairs and markets *Last Tuesday 7 Months*

Weekly market day *Wednesday* Half-holiday *Thursday*

GARAGES AND PETROL STATIONS

*Bole, Byrne & Hopkins.*  
*Stevens Garage.*  
*Art. Haddon's. Bolarneey (3/4 mile).*

CONVEYANCES FOR HIRE (Owners):

Taxis *Frank & Murphy (Litzwillian Sq).*  
*Joe Barr. Main Street.*  
*MRS Murray " "*  
*#*

Motors (Touring) *As above.*

Boats (State type) *Row boats.*

Bicycles *H. B. Murray (Main St.)*  
*John Smith Church Street.* ~~*John Smith*~~

Caravans ~~\_\_\_\_\_~~

Horses ~~\_\_\_\_\_~~

CAMPING SITES

Location *The Marrough.* Landowner *U. D. C.*

*Silver Strand (2 miles) 8/6 weekly*  
*Huts let. 25/- weekly* *5/- per night or by arrangement with town clerk.*  
*The Silver Strand, 2/6 weekly.* *25. James Smith, Silver Strand.*  
*(Phil Kelly, Dynbeg Wicklow)*

Local Improvements Committee *U. D. C.*

Secretary *John McGrath Solr. Town Clerk.*

DATE *Oct. 7. 42* (Signed) *[Signature]* Surveyor.



**I.T.A. TOPOGRAPHICAL AND GENERAL SURVEY**

**AMENITIES AND GENERAL INFORMATION.  
TOWNS AND VILLAGES (Other than Seaside)**

BARONY OF Newcastle

TOWN OR VILLAGE Rathnew PARISH Wicklow COUNTY Wicklow.

Location and brief description.

Population ~~6-700~~ 547.

Rathnew Village is at the fork of the main Dublin-Wicklow, Dublin-Wexford roads. The original thatched-cottage village which existed for over a century and a half, has been replaced by one of model modern cottages with electric light & water. It was the first rural town-planning scheme of its kind in Europe.

Distances: - Dublin 29 mts., Wicklow 1 3/4 mts.  
Is there a Town Hall? Yes Location Centre of Village.

Parks, Gardens and Recreation Grounds. Brief description:

Wicklow Co. C. are arranging to provide Recreation Grounds.

None

Brief comments on water supply and sewerage:

Water & sewerage has been recently laid on, by the Board of Health, & is in good condition.

**PUBLIC SERVICES**

Nearest station Rathnew Distance 200 yds Bus? Yes <sup>Dublin/Wexford</sup> G.S.R.  
Public lighting by—Electricity? Yes Gas? no. <sup>Dublin/Wicklow</sup> Services.

**DANCING**

Dance hall Yes Proprietor MRS Acton.

**CINEMAS AND THEATRES**

Cinemas None Pictures shown (nights) —

Theatre Periodically at Dance Hall. Kind of shows Various  
(Drama, Comedy &c.)



**LIBRARIES**

Public Libraries.....

Private Lending Libraries.....

**CHURCHES AND SERVICES**

Church *R. Catholic* Services (Sundays) *8 am + ~~11 am~~ 11oc.*  
*C. of S.* *4 p.m.*

**POSTAL FACILITIES**

Location of Post Office..... *Central (in village).*

Business (? M.O., Telegraph, Telephone)..... *General? M.O., Telegraph, Telephone*

**BANKING**

Banks.....

**SPORTS AND PHOTO SUPPLIES**

Sports Dealers.....

Photographic Stores.....

**SWIMMING POOLS AND BATHS**

Swimming Pool?..... Location.....

Public Baths?..... Location.....



**SOCIAL CLUBS, CULTURAL SOCIETIES, &c.**

Social Clubs

Cultural Societies

*Technical bookery classes held  
in Hall.*

**INDUSTRIES AND HANDCRAFTS**

Industries

Handcrafts or Cottage Industries (Give names of craftsmen, employer, &c.):

**PUBLIC MONUMENTS**

*(Brief description; inscription to be quoted)*

**IMPORTANT PUBLIC BUILDINGS**

*(Give brief notes on architectural features)*

**SCHOOLS AND COLLEGES**

*N. School. Boys + Girls. ~~attendance~~ 300*

**HOSPITALS**



**FAIRS AND MARKETS ; HALF-HOLIDAY**

Monthly fairs and markets.....

Weekly market day..... Half-holiday *Thursday*

**GARAGES AND PETROL STATIONS**

*Mulvihill's Garage.*

**CONVEYANCES FOR HIRE (Owners) :**

Taxis.....

Motors (Touring).....

Boats (State type).....

Bicycles *Mulvihill's Garage.*

Caravans.....

Horses *Pat Doyle. } Hacks & Horses.*  
*John Behan. }*

**CAMPING SITES**

*(At principal holiday resorts)*

Location..... Landowner.....

Local Improvements Committee.....

Secretary.....

DATE *Oct 7 42*

(Signed) *[Signature]*

Surveyor.



BARONY. Newcastle.

Village Rathnew PARISH Wicklow COUNTY. Wicklow

BOARDING HOUSES.

- Mrs. Dynaall.
- Mrs. Ellis
- Mrs. Cullen.
- Mrs. Smullen.
- Mrs. M. Doyle
- Miss Franey.

Ballybeg. Rathnew.

copy typed & filed  
*[Signature]*

Oct 7. 42

*[Signature]*



*copy typed & filed*

**I.T.A. TOPOGRAPHICAL AND GENERAL SURVEY  
ACCOMMODATION AND CATERING.**

BARONY OF ARKLOW

TOWN OR VILLAGE WICKLOW PARISH WICKLOW COUNTY WICKLOW

Hotels	No. of Bedrooms	No. of Bathrooms	Licensed ?
<u>Grand</u>	<u>18<sup>6</sup></u>	<u>1</u>	<u>Yes</u>
<u>Bridge</u>			<u>Yes</u>
<u>Seaview Guest House</u>			<u>—</u>
<u>Wicklow Hotel</u>			<u>—</u>
<u>Green Tree Hotel</u>			<u>—</u>
<u>Ryan's Hotel</u>			<u>—</u>

Guest or Boarding Houses

Mrs. A. Allison 7 Leithin Place. *Tom Woodruffe, Ballyquile*  
 Mrs. B. Bullard 3 Bath Street. *Mrs. R. Woodruffe, Rahen.*  
 Mrs. H. Carroll Harbour View.  
 Mrs. Cleary Harbour View.  
 Mrs. Davidson Leithin Place.  
 Mrs. Dawson 5 Leithin Place.  
 Mrs. Devlin 1 New St. and no. office  
 Mrs. J. Doyle Upper Mall.  
 Mrs. H. Duggan Church Hill.  
 Geo. Flood Fitzgibbon Sq.  
 Mrs. S. A. Furlong Greenmount.  
 Mrs. A. Gaston Church Hill.  
 Mrs. H. Gough The Hall.  
 Mrs. G. Gregg Summerhill.  
 Mrs. Tom Hayes 1 Bath St.  
 Mrs. Tom Kavanagh Summerhill.  
 Mrs. H. Kinsella Harbour View.  
 Mrs. S. Knox 3 Leithin Place.  
 Mrs. B. Maguire 22 The Hall.  
 Mrs. K. McCarroll Leithin Place.  
 Mrs. Mullins 1 Leithin Place.  
 Mrs. A. O'Connell Bond St.  
 Mrs. Roscoe The Hall.  
 Mrs. W. Sutton The Bungalow, Summerhill.  
 Mrs. Wall 13 Leithin Place.  
 Mrs. K. A. Bowden Leithin Lodge, 5 Bedrooms 2 1/2 Bath Rm. 1/2  
*Bachelors Walk*

Restaurants and Cafés

Mr. G. J. Smith Silver Strand.  
 Flood's Cafe Fitzgibbon Sq.

DATE 6.1.42

(Signed)



Surveyor.

(Plain sheet of foolscap to be used if space here is not adequate)