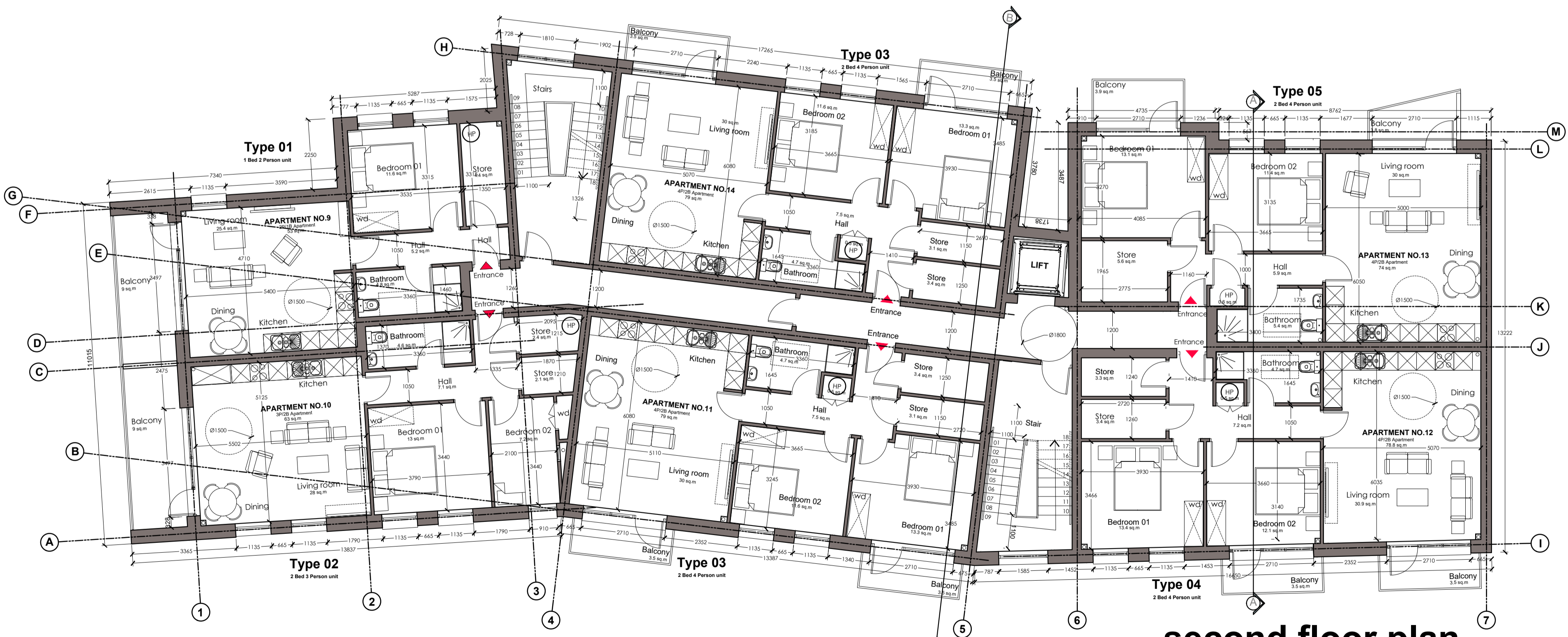


NOTE:  
 CHECK ALL DIMENSIONS ON SITE  
 DO NOT SCALE FROM THIS DRAWING  
 REPORT ANY DISCREPANCIES AND/OR CHANGES TO THE ARCHITECT IMMEDIATELY  
 THIS DRAWING IS THE PROPERTY OF MRL vanDIJK ARCHITECTS AND IS NOT TO BE USED OR COPIED IN ANY MANNER WITHOUT THE WRITTEN CONSENT OF MRL vanDIJK ARCHITECTS  
 ALL RIGHTS RESERVED. THIS ACCORDS TO THE CONTROL OF COPYRIGHT BY THE ARCHITECT  
 APPROVALS REQUIRED ON THIS DRAWING WHICH HAVE BEEN OBTAINED BY MRL vanDIJK ARCHITECTS  
 PLANNING  
 THE DRAWING HAS BEEN PROVIDED FOR COMMENT ONLY FOR THE PROPOSED HOUSING AND IS NOT A PLANNING APPLICATION AND IS NOT TO BE USED FOR ANY OTHER PURPOSE



first floor plan  
 AB.01 - Scale 1:100



second floor plan  
 AB.01 - Scale 1:100

QUALITY HOUSING FOR SUSTAINABLE COMMUNITIES GUIDELINES		TYPE - 03 APT. UNIT		
1 BED / 2 PERSON APARTMENTS		Required	Provided	Additional note
Target Ground Floor Area	45m <sup>2</sup>	53m <sup>2</sup>		
Min Aggregate Living Area	23m <sup>2</sup>	25.4m <sup>2</sup>		(min width 3.6m) -LDK
Min Aggregate Bedroom Area	11.4m <sup>2</sup>	11.6m <sup>2</sup>		(min width 2.1 & 2.8m)
Min Aggregate Storage Area	3m <sup>2</sup>	4.4m <sup>2</sup>		
Min Private Amenity space	5m <sup>2</sup>	9m <sup>2</sup>		(community space 6m <sup>2</sup> )

QUALITY HOUSING FOR SUSTAINABLE COMMUNITIES GUIDELINES		TYPE - 04 APT. UNIT		
2 BED / 3 PERSON APARTMENTS		Required	Provided	Additional note
Target Ground Floor Area	63m <sup>2</sup>	63m <sup>2</sup>		
Min Aggregate Living Area	28m <sup>2</sup>	28m <sup>2</sup>		(min width 3.6m) -LDK
Min Aggregate Bedroom Area	20.1m <sup>2</sup>	20.1m <sup>2</sup>		(min width 2.1 & 2.8m)
Min Aggregate Storage Area	5m <sup>2</sup>	5m <sup>2</sup>		
Min Private Amenity space	6m <sup>2</sup>	9m <sup>2</sup>		(community space 6m <sup>2</sup> )

QUALITY HOUSING FOR SUSTAINABLE COMMUNITIES GUIDELINES		TYPE - 05 APT. UNIT		
2 BED / 4 PERSON APARTMENTS		Required	Provided	Additional note
Target Ground Floor Area	73m <sup>2</sup>	79m <sup>2</sup>		
Min Aggregate Living Area	30m <sup>2</sup>	30m <sup>2</sup>		(min width 3.6m) -LDK
Min Aggregate Bedroom Area	24.4m <sup>2</sup>	24.5m <sup>2</sup>		(min width 2.1 & 2.8m)
Min Aggregate Storage Area	6m <sup>2</sup>	7m <sup>2</sup>		
Min Private Amenity space	7m <sup>2</sup>	7m <sup>2</sup>		(community space 7m <sup>2</sup> )

QUALITY HOUSING FOR SUSTAINABLE COMMUNITIES GUIDELINES		TYPE - 06 APT. UNIT		
2 BED / 4 PERSON APARTMENTS		Required	Provided	Additional note
Target Ground Floor Area	73m <sup>2</sup>	78.8m <sup>2</sup>		
Min Aggregate Living Area	30m <sup>2</sup>	30.9m <sup>2</sup>		(min width 3.6m) -LDK
Min Aggregate Bedroom Area	24.4m <sup>2</sup>	25.5m <sup>2</sup>		(min width 2.1 & 2.8m)
Min Aggregate Storage Area	6m <sup>2</sup>	6.7m <sup>2</sup>		
Min Private Amenity space	7m <sup>2</sup>	7m <sup>2</sup>		(community space 7m <sup>2</sup> )

QUALITY HOUSING FOR SUSTAINABLE COMMUNITIES GUIDELINES		TYPE - 07 APT. UNIT		
2 BED / 4 PERSON APARTMENTS		Required	Provided	Additional note
Target Ground Floor Area	73m <sup>2</sup>	74m <sup>2</sup>		
Min Aggregate Living Area	30m <sup>2</sup>	30m <sup>2</sup>		(min width 3.6m) -LDK
Min Aggregate Bedroom Area	24.4m <sup>2</sup>	24.5m <sup>2</sup>		(min width 2.1 & 2.8m)
Min Aggregate Storage Area	6m <sup>2</sup>	6.7m <sup>2</sup>		
Min Private Amenity space	7m <sup>2</sup>	7m <sup>2</sup>		(community space 7m <sup>2</sup> )

QUALITY HOUSING FOR SUSTAINABLE COMMUNITIES GUIDELINES		TYPE - 08 APT. UNIT		
2 BED / 4 PERSON APARTMENTS		Required	Provided	Additional note
Target Ground Floor Area	73m <sup>2</sup>	79m <sup>2</sup>		
Min Aggregate Living Area	30m <sup>2</sup>	30m <sup>2</sup>		(min width 3.6m) -LDK
Min Aggregate Bedroom Area	24.4m <sup>2</sup>	24.5m <sup>2</sup>		(min width 2.1 & 2.8m)
Min Aggregate Storage Area	6m <sup>2</sup>	7m <sup>2</sup>		
Min Private Amenity space	7m <sup>2</sup>	7m <sup>2</sup>		(community space 7m <sup>2</sup> )

QUALITY HOUSING FOR SUSTAINABLE COMMUNITIES GUIDELINES		TYPE - 09 APT. UNIT		
1 BED / 2 PERSON APARTMENTS		Required	Provided	Additional note
Target Ground Floor Area	45m <sup>2</sup>	53m <sup>2</sup>		
Min Aggregate Living Area	23m <sup>2</sup>	25.4m <sup>2</sup>		(min width 3.6m) -LDK
Min Aggregate Bedroom Area	11.4m <sup>2</sup>	11.6m <sup>2</sup>		(min width 2.1 & 2.8m)
Min Aggregate Storage Area	3m <sup>2</sup>	4.4m <sup>2</sup>		
Min Private Amenity space	5m <sup>2</sup>	9m <sup>2</sup>		(community space 6m <sup>2</sup> )

QUALITY HOUSING FOR SUSTAINABLE COMMUNITIES GUIDELINES		TYPE - 10 APT. UNIT		
2 BED / 3 PERSON APARTMENTS		Required	Provided	Additional note
Target Ground Floor Area	63m <sup>2</sup>	63m <sup>2</sup>		
Min Aggregate Living Area	28m <sup>2</sup>	28m <sup>2</sup>		(min width 3.6m) -LDK
Min Aggregate Bedroom Area	20.1m <sup>2</sup>	20.1m <sup>2</sup>		(min width 2.1 & 2.8m)
Min Aggregate Storage Area	5m <sup>2</sup>	5m <sup>2</sup>		
Min Private Amenity space	6m <sup>2</sup>	9m <sup>2</sup>		(community space 6m <sup>2</sup> )

QUALITY HOUSING FOR SUSTAINABLE COMMUNITIES GUIDELINES		TYPE - 11 APT. UNIT		
2 BED / 4 PERSON APARTMENTS		Required	Provided	Additional note
Target Ground Floor Area	73m <sup>2</sup>	79m <sup>2</sup>		
Min Aggregate Living Area	30m <sup>2</sup>	30m <sup>2</sup>		(min width 3.6m) -LDK
Min Aggregate Bedroom Area	24.4m <sup>2</sup>	24.5m <sup>2</sup>		(min width 2.1 & 2.8m)
Min Aggregate Storage Area	6m <sup>2</sup>	7m <sup>2</sup>		
Min Private Amenity space	7m <sup>2</sup>	7m <sup>2</sup>		(community space 7m <sup>2</sup> )

QUALITY HOUSING FOR SUSTAINABLE COMMUNITIES GUIDELINES		TYPE - 12 APT. UNIT		
2 BED / 4 PERSON APARTMENTS		Required	Provided	Additional note
Target Ground Floor Area	73m <sup>2</sup>	78.8m <sup>2</sup>		
Min Aggregate Living Area	30m <sup>2</sup>	30.9m <sup>2</sup>		(min width 3.6m) -LDK
Min Aggregate Bedroom Area	24.4m <sup>2</sup>	25.5m <sup>2</sup>		(min width 2.1 & 2.8m)
Min Aggregate Storage Area	6m <sup>2</sup>	6.7m <sup>2</sup>		
Min Private Amenity space	7m <sup>2</sup>	7m <sup>2</sup>		(community space 7m <sup>2</sup> )

QUALITY HOUSING FOR SUSTAINABLE COMMUNITIES GUIDELINES		TYPE - 13 APT. UNIT		
2 BED / 4 PERSON APARTMENTS		Required	Provided	Additional note
Target Ground Floor Area	73m <sup>2</sup>	74m <sup>2</sup>		
Min Aggregate Living Area	30m <sup>2</sup>	30m <sup>2</sup>		(min width 3.6m) -LDK
Min Aggregate Bedroom Area	24.4m <sup>2</sup>	24.5m <sup>2</sup>		(min width 2.1 & 2.8m)
Min Aggregate Storage Area	6m <sup>2</sup>	6.7m <sup>2</sup>		
Min Private Amenity space	7m <sup>2</sup>	7m <sup>2</sup>		(community space 7m <sup>2</sup> )

QUALITY HOUSING FOR SUSTAINABLE COMMUNITIES GUIDELINES		TYPE - 14 APT. UNIT		
2 BED / 4 PERSON APARTMENTS		Required	Provided	Additional note
Target Ground Floor Area	73m <sup>2</sup>	79m <sup>2</sup>		
Min Aggregate Living Area	30m <sup>2</sup>	30m <sup>2</sup>		(min width 3.6m) -LDK
Min Aggregate Bedroom Area	24.4m <sup>2</sup>	24.5m <sup>2</sup>		(min width 2.1 & 2.8m)
Min Aggregate Storage Area	6m <sup>2</sup>	7m <sup>2</sup>		
Min Private Amenity space	7m <sup>2</sup>	7m <sup>2</sup>		(community space 7m <sup>2</sup> )

REV	DATE	DETAILS OF ISSUE	INITIALS
A	09.2020	Additional Dimensions Added	DF

STATUS OF DRAWING	
000 SURVEY/EXISTING (S)	500 CONSTRUCTION (C)
100 SELECT DESIGN (SK)	400 AS BUILT (AB)
200 PLANNING (PL)	
300 WORKING DRAWING (WD)	
400 TENDER (T)	PRELIMINARY (P)

**MRL vanDIJK ARCHITECTS**

A joint venture between Milligan Roche Larkin and van Dijk Architects  
 Mill House, Mill Street, Dundalk, Co. Louth. A91 X777, (P) +353 42 9354466  
 Armagh Road, Newry, County Down BT35 6DN (P) +44 28 30233755

CLIENT: RESPOND Housing Association

PROJECT: Proposed Apartment Development at Kilbride Lodge site located at junction of Kilmoney Road & Ballywaltrim Road, Bray, County Wicklow.

TITLE: PROPOSED FIRST & SECOND FLOOR PLANS

SCALE	DRG NO	REVISION
1:100@A1	1913-01-201	
DATE	DRAWN	CHECKED
27.09.2019	Dominic Foley	Cathal Maguire